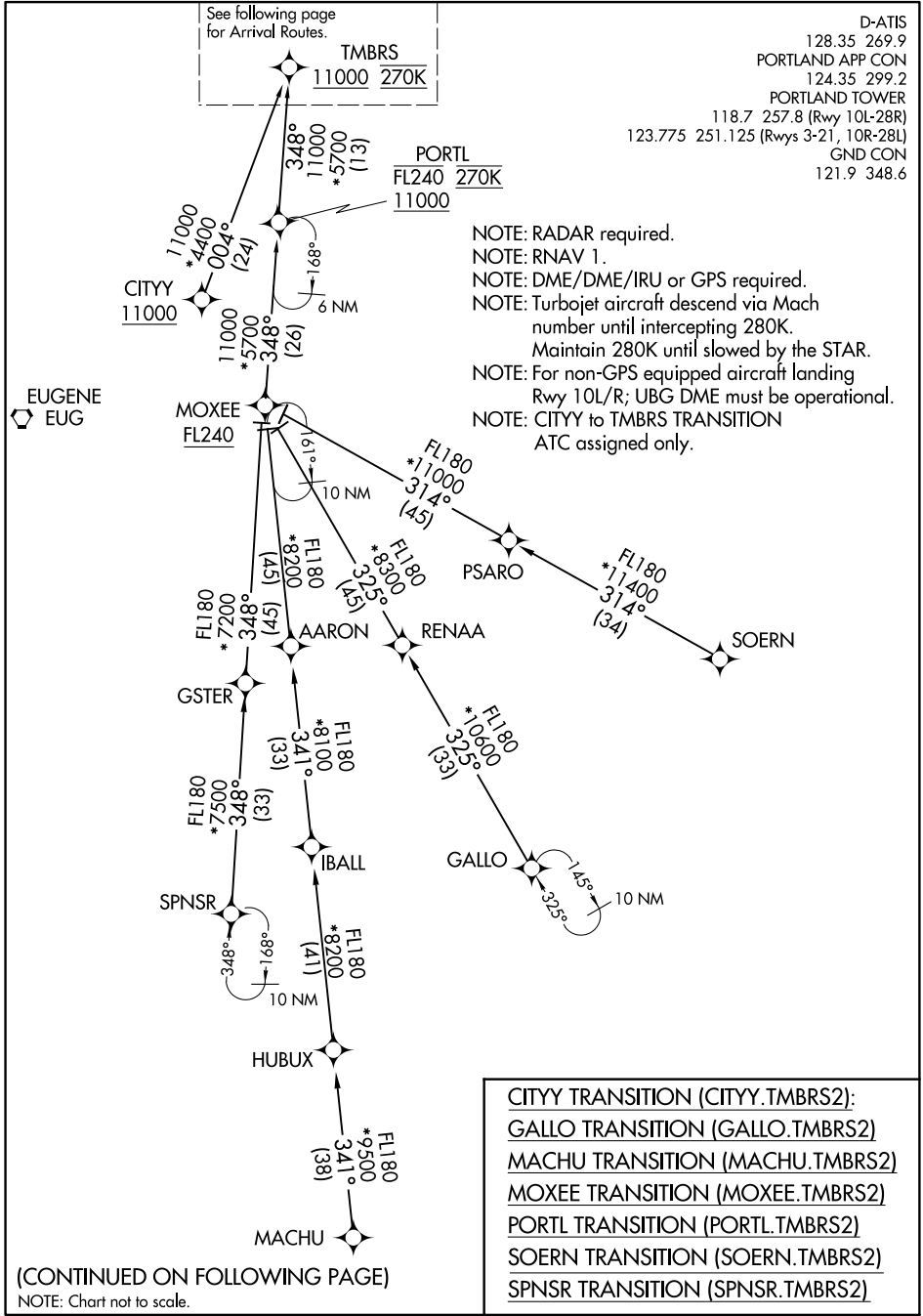


See following page  
for Arrival Routes.

D-ATIS  
128.35 269.9  
PORTLAND APP CON  
124.35 299.2  
PORTLAND TOWER  
118.7 257.8 (Rwy 10L-28R)  
123.775 251.125 (Rwys 3-21, 10R-28L)  
GND CON  
121.9 348.6



NOTE: RADAR required.  
NOTE: RNAV 1.  
NOTE: DME/DME/IRU or GPS required.  
NOTE: Turbojet aircraft descend via Mach number until intercepting 280K. Maintain 280K until slowed by the STAR.  
NOTE: For non-GPS equipped aircraft landing Rwy 10L/R; UBG DME must be operational.  
NOTE: CITYY to TMBRS TRANSITION ATC assigned only.

CITYY TRANSITION (CITYY.TMBRS2):  
GALLO TRANSITION (GALLO.TMBRS2)  
MACHU TRANSITION (MACHU.TMBRS2)  
MOXEE TRANSITION (MOXEE.TMBRS2)  
PORTL TRANSITION (PORTL.TMBRS2)  
SOERN TRANSITION (SOERN.TMBRS2)  
SPNSR TRANSITION (SPNSR.TMBRS2)

(CONTINUED ON FOLLOWING PAGE)  
NOTE: Chart not to scale.

NW-1, 31 JAN 2019 to 28 FEB 2019

NW-1, 31 JAN 2019 to 28 FEB 2019