


WAAS CH 81804 W10B	APP CRS 103°	Rwy Idg 8535 TDZE 30 Apt Elev 31
--	------------------------	---

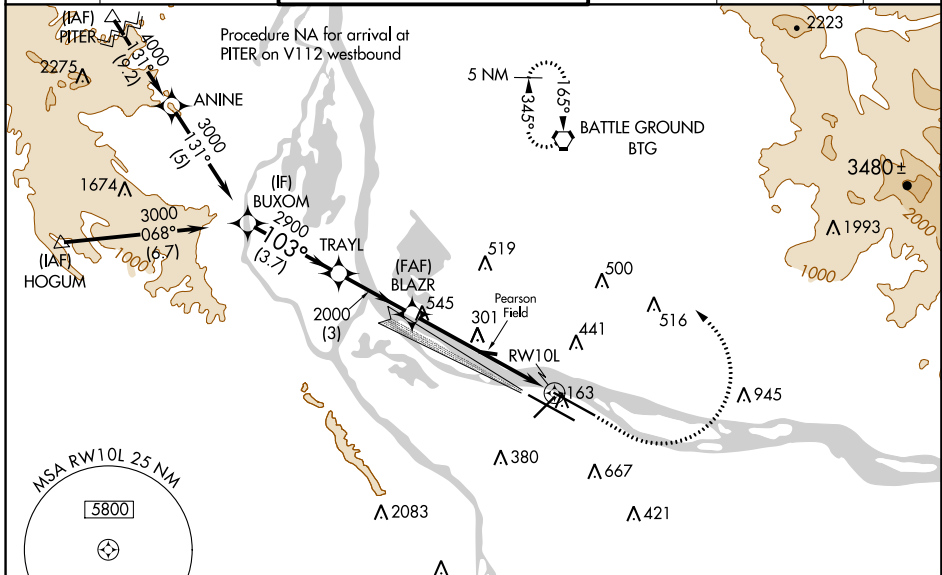
RNAV (GPS) Y RWY 10L

PORTLAND INTL (PDX)

⚠ For uncompensated Baro-VNAV systems, LNAV/VNAV NA below -15°C (5°F) or above 54°C (130°F). DME/DME RNP-0.3 NA. Simultaneous approach authorized with Rwy 10R. Use of FD or AP providing RNAV track guidance required during simultaneous operations. LNAV procedure NA during simultaneous operations. For inoperative MALSR, increase LPV visibility all Cats to RVR 4500. Increase LNAV/VNAV visibility all Cats to 1½ mile, and LNAV Cat C and D visibility to 1¾ mile.

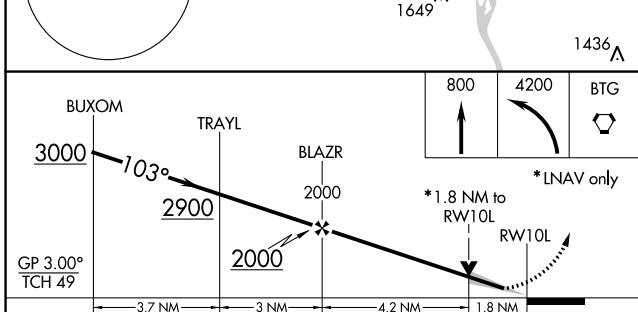
MALSR
 MISSED APPROACH: Climb to 800 then dimbing left turn to 4200 direct BTG VORTAC and hold, continue climb-in-hold to 4200.

D-ATIS 128.35 269.9	PORTLAND APP CON 124.35 299.2	PORTLAND TOWER Rwy 10L-28R 118.7 257.8 Rwys 3-21, 10R-28L 123.775 251.125	GND CON 121.9 348.6	CLNC DEL 120.125 318.1	CPDLC
---	---	---	-------------------------------	----------------------------------	-------



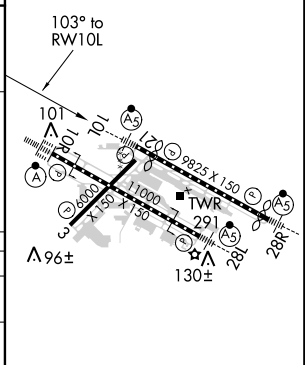
NW-1, 31 JAN 2019 to 28 FEB 2019

NW-1, 31 JAN 2019 to 28 FEB 2019



ELEV 31	D TDZE 30
---------	------------------

CATEGORY	A	B	C	D
LPV DA		296/24	266 (300-½)	
LNAV/VNAV DA		413/45	383 (400-¾)	
LNAV MDA	640-1	610 (700-1)	640-1⅓	610 (700-1⅓)
CIRCLING	720-1 689 (700-1)	740-1 709 (800-1)	760-2 729 (800-2)	980-3 949 (1000-3)



REIL Rwys 3 and 21
TDZ/CL Rwy 10R
MIRL Rwy 3-21
HIRL Rwys 10L-28R and 10R-28L