


WAAS CH 56205 W28B	APP CRS 283°	Rwy Idg 11000 TDZE 23 Apt Elev 31
--	------------------------	--

RNAV (GPS) X RWY 28L

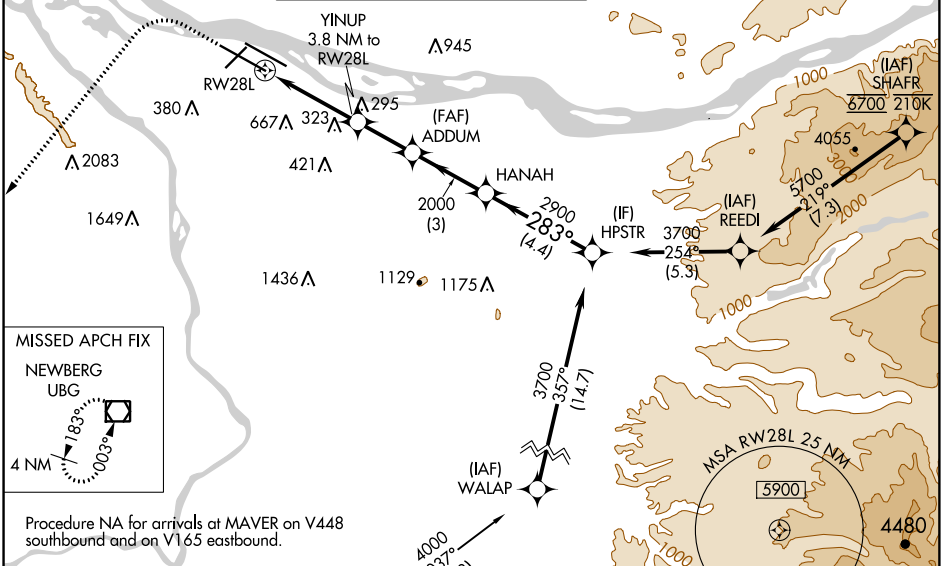
PORTLAND INTL (PDX)

⚠ For uncompensated Baro-VNAV systems, LNAV/VNAV NA below -6°C (22°F) or above 54°C (130°F). Simultaneous approach authorized. LNAV procedure NA during simultaneous operations. DME/DME RNP-0.3 NA. Use of FD or AP providing RNAV track guidance required during simultaneous operations. For inop ALS, increase LNAV Cat C/D visibility to 1½ SM.

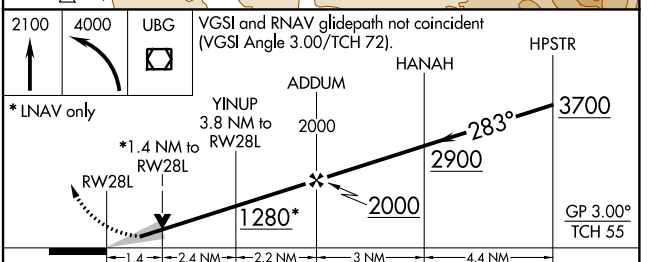
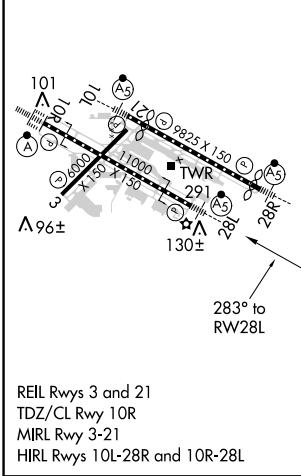
MALSRL 

MISSED APPROACH: Climb to 2100 then climbing left turn to 4000 direct UBG VOR/DME and hold.

D-ATIS 128.35 269.9	PORTLAND APP CON 124.35 299.2	PORTLAND TOWER Rwy 10L-28R 118.7 257.8 Rwys 3-21, 10R-28L 123.775 251.125	GND CON 121.9 348.6	CLNC DEL 120.125 318.1	CPDLC
---	---	---	-------------------------------	----------------------------------	-------



ELEV 31	D	TDZE 23
---------	----------	---------



CATEGORY	A	B	C	D
LPV DA		309/22	286 (300-½)	
LNAV/VNAV DA		368/30	345 (400-⅔)	
LNAV MDA	540/24	517 (600-½)	540/55	517 (600-1)
C CIRCLING	720-1 689 (700-1)	760-1 729 (800-1)	1060-3	1029 (1100-3)

NW-1, 31 JAN 2019 to 28 FEB 2019

NW-1, 31 JAN 2019 to 28 FEB 2019