

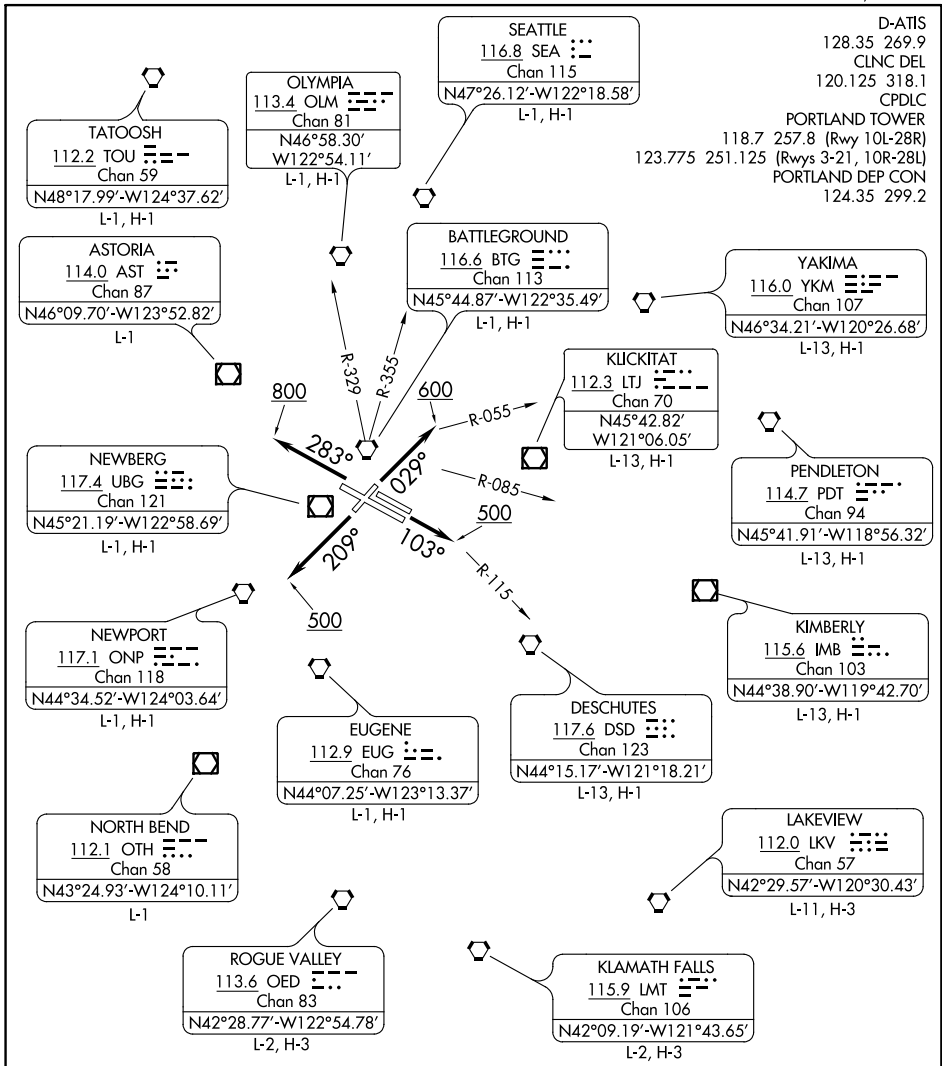
PORTLAND ONE DEPARTURE

AL-330 (FAA)

PORTLAND INTL (PDX)
PORTLAND, OREGON

NW-1, 31 JAN 2019 to 28 FEB 2019

NW-1, 31 JAN 2019 to 28 FEB 2019



TAKEOFF MINIMUMS

- Rwy 3: Standard with minimum climb of 400' per NM to 2900.
- Rwy 10L: Standard with minimum climb of 450' per NM to 2900.
- Rwy 10R: Standard with minimum climb of 400' per NM to 2900.
- Rwy 21: Standard with minimum climb of 450' per NM to 2900.
- Rwy 28L: Standard with minimum climb of 375' per NM to 2900.
- Rwy 28R: Standard with minimum climb of 350' per NM to 2900.

NOTE: RADAR required.

NOTE: Chart not to scale.

(NARRATIVE ON FOLLOWING PAGE)

PORTLAND ONE DEPARTURE

PORTLAND, OREGON
PORTLAND INTL (PDX)