

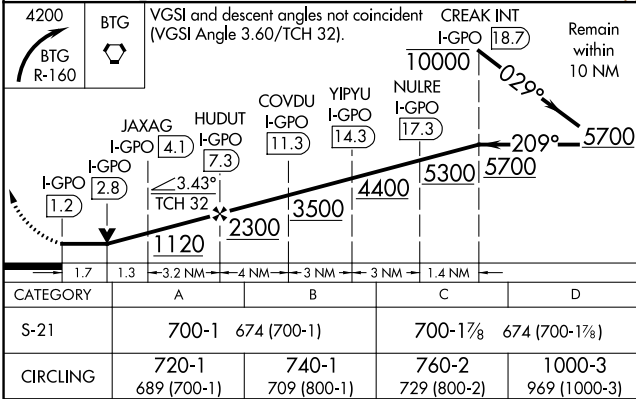
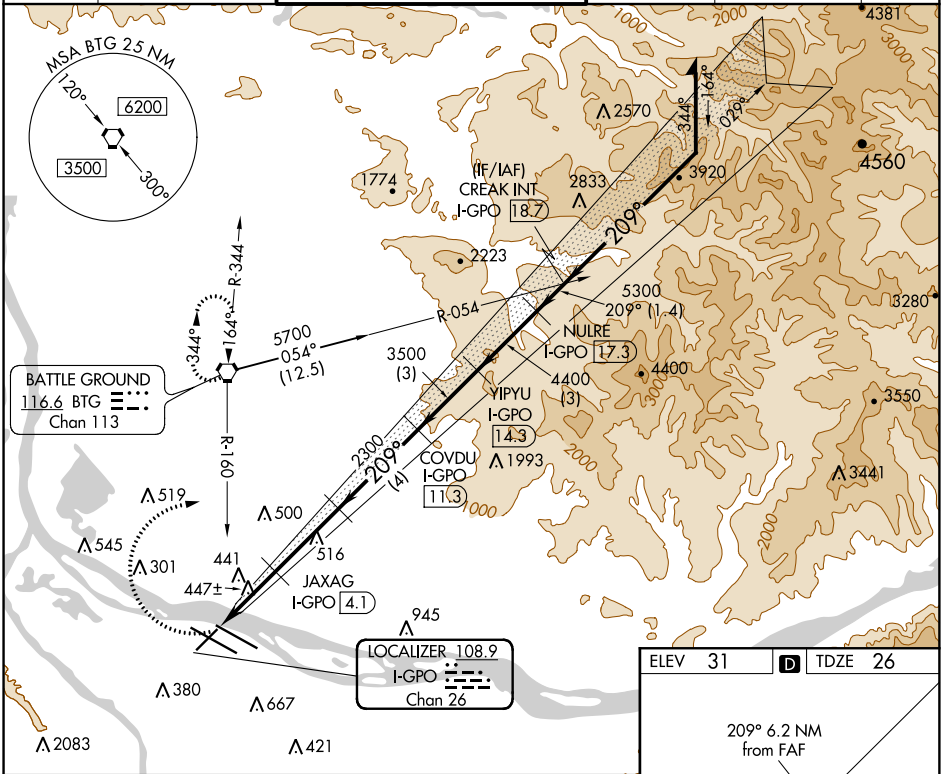
LOC/DME I-GPO <b>108.9</b> Chan <b>26</b>	APP CRS <b>209°</b>	Rwy Idg <b>6000</b> TDZE <b>26</b> Apt Elev <b>31</b>
---	------------------------	---

# LOC/DME RWY 21

PORTLAND INTL (PDX)

<p><b>▼</b> Helicopter visibility reduction below 3/4 SM NA.</p>	<p>MISSED APPROACH: Climbing right turn to 4200 on BTG VORTAC R-160 to BTG VORTAC and hold, continue climb-in-hold to 4200.</p>
--	---

D-ATIS <b>128.35</b> <b>269.9</b>	PORTLAND APP CON <b>124.35 299.2</b>	PORTLAND TOWER Rwy 10L-28R Rwy 3-21, 10R-28L <b>118.7 257.8 123.775 251.125</b>	GND CON <b>121.9 348.6</b>	CLNC DEL <b>120.125 318.1</b>	CPDLC
---	---	---	-------------------------------	----------------------------------	-------



ELEV 31	TDZE 26
---------	---------

REIL Rwy 3 and 21  
TDZ/CL Rwy 10R  
MIRL Rwy 3-21  
HIRL Rwy 10L-28R and 10R-28L

NW-1, 31 JAN 2019 to 28 FEB 2019

NW-1, 31 JAN 2019 to 28 FEB 2019