

# LAVAA SIX DEPARTURE (RNAV)

AL-330 (FAA)

NW-1, 1-31 JAN 2019 to 28 FEB 2019

## DEPARTURE ROUTE DESCRIPTION

**TAKEOFF RUNWAYS 10L/R:** Climb heading 103° to 540, then direct to RIVRR, then on depicted route to LAVAA, thence. . . .

**TAKEOFF RUNWAY 28L:** Climb heading 283° to 540, then direct PEGTY, then on depicted route to LAVAA, thence. . . .

**TAKEOFF RUNWAY 28R:** Climb heading 283°, intercept course 268° to PEGTY, then on depicted route to LAVAA, thence. . . .

. . . via (Transition), maintain assigned altitude, expect filed altitude 10 minutes after departure.

PENDELTON TRANSITION (LAVAA6.PDT)

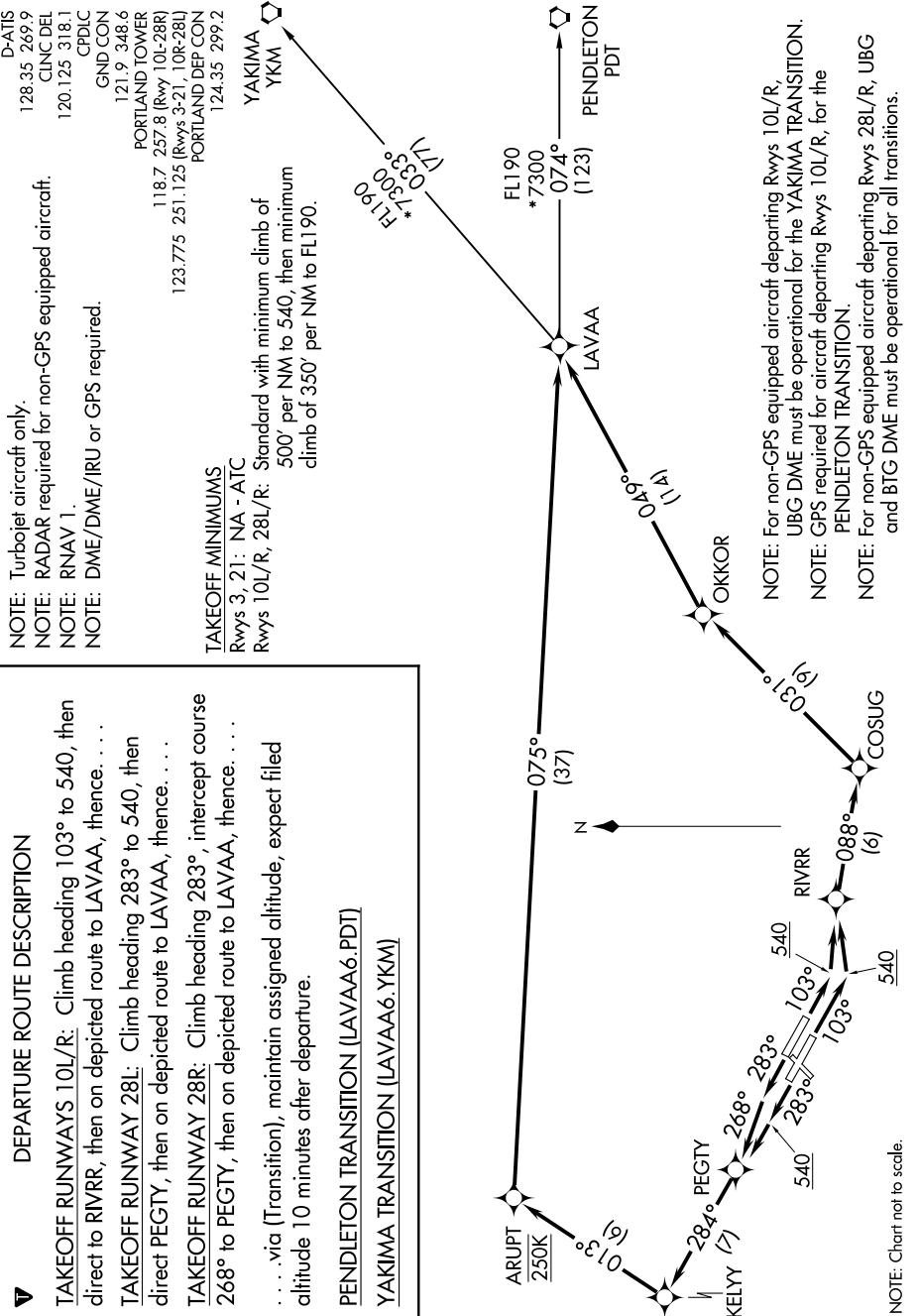
YAKIMA TRANSITION (LAVAA6.YKM)

**NOTE:** Turbojet aircraft only.  
**NOTE:** RADAR required for non-GPS equipped aircraft.  
**NOTE:** RNAV 1.  
**NOTE:** DME/DME/IRU or GPS required.

**D-AITS**  
 128.35 269.9 CINC DEL  
 120.125 318.1 CPDLC  
 GND:CON  
 121.9 348.6  
 PORTLAND TOWER  
 118.7 257.8 (Rwy 10L-28R)  
 123.775 251.125 (Rwys 3-21, 10R-28L)  
 PORTLAND DEP CON  
 124.35 299.2

### TAKEOFF MINIMUMS

Rwys 3, 21: NA - ATC  
 Rwys 10L/R, 28L/R: Standard with minimum climb of 500' per NM to 540, then minimum climb of 350' per NM to FL190.



**NOTE:** For non-GPS equipped aircraft departing Rwys 10L/R, UBG DME must be operational for the YAKIMA TRANSITION.  
**NOTE:** GPS required for aircraft departing Rwys 10L/R, for the PENDELTON TRANSITION.  
**NOTE:** For non-GPS equipped aircraft departing Rwys 28L/R, UBG and BTG DME must be operational for all transitions.

NOTE: Chart not to scale.

NW-1, 31 JAN 2019 to 28 FEB 2019

# LAVAA SIX DEPARTURE (RNAV)