

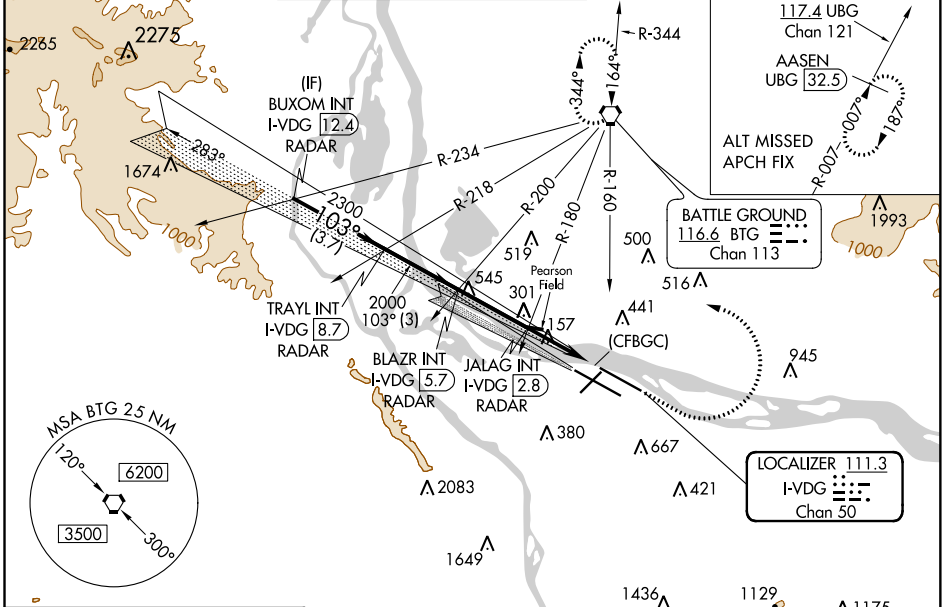
LOC/DME I-VDG 111.3 Chan 50	APP CRS 103°	Rwy Idg 8535 TDZE 30 Apt Elev 31
---	------------------------	---

ILS or LOC RWY 10L

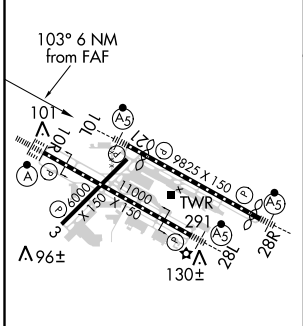
PORTLAND INTL (PDX)

<p>⚠ Simultaneous approach authorized with Rwy 10R. For inoperative MALS/R, increase S-ILS visibility all Cts to RVR 4500. S-LOC Cat E visibility to RVR 6000. RADAR or DME required.</p>	<p>MALS/R</p>	<p>MISSED APPROACH: Climb to 800 then climbing left turn to 4200 on BTG VORTAC R-160 to BTG VORTAC and hold, continue climb-in-hold to 4200.</p>
		<p>D-ATIS 128.35 269.9</p>
		<p>PORTLAND APP CON 124.35 299.2</p>

PORTLAND TOWER Rwy 10L-28R 118.7 257.8		Rwys 3-21, 10R-28L 123.775 251.125		GND CON 121.9 348.6	CLNC DEL 120.125 318.1	CPDLC
---	--	--	--	-------------------------------	----------------------------------	-------



ELEV 31	D	TDZE 30
---------	----------	---------



REIL Rwys 3 and 21
TDZ/CL Rwy 10R
MIRL Rwy 3-21
HIRL Rwys 10L-28R and 10R-28L
FAF to MAP 5.6 NM

Knots	60	90	120	150	180
Min:Sec	5:36	3:44	2:48	2:14	1:52

RADAR REQUIRED

	BUXOM INT I-VDG 12.4 RADAR	TRAYL INT I-VDG 8.7 RADAR	BLAZR INT I-VDG 5.7 RADAR	JALAG INT I-VDG 2.8 RADAR	BTG BTG R-160
3000	103°				800
2300					4200
2000					*LOC only
1100					
	3.7 NM	3 NM	2.8 NM	2.7 NM	0.5
CATEGORY	A	B	C	D	E
S-ILS 10L	293/24		263 (300-½)		
S-LOC 10L	420/24	390 (400-½)	420/35 390 (400-¾)		
CIRCLING	720-1 689 (700-1)	740-1 709 (800-1)	760-2 729 (800-2)	980-3 949 (1000-3)	1140-3 1109 (1200-3)