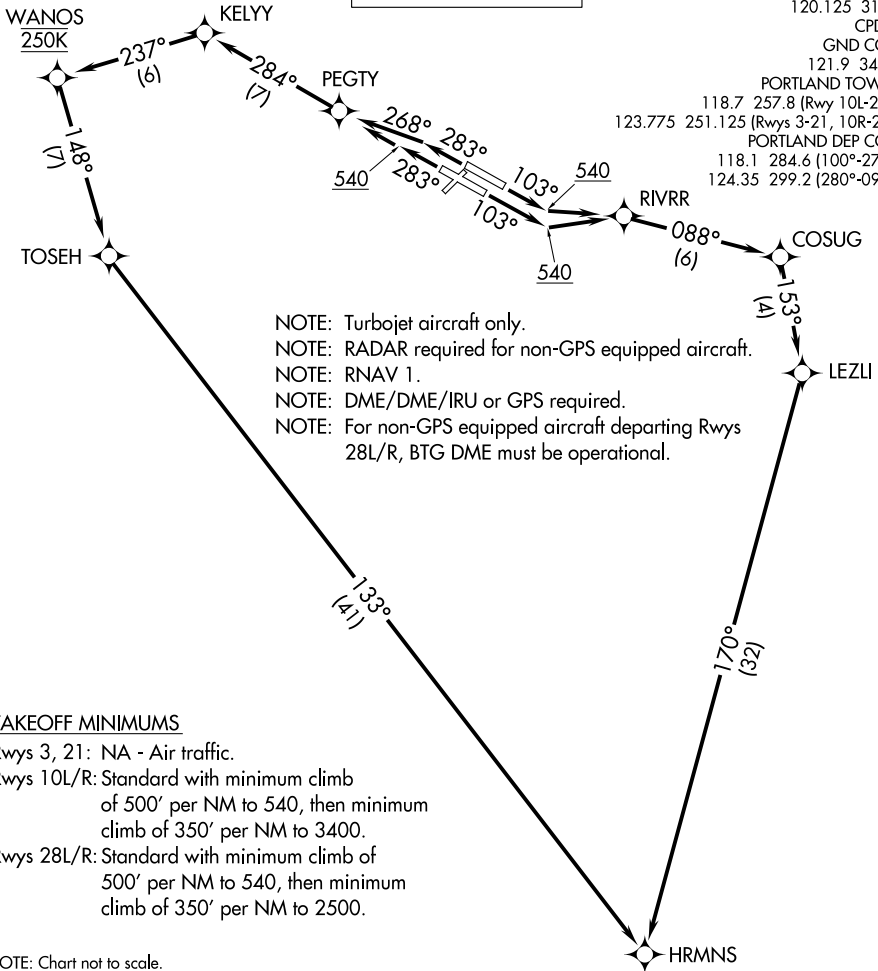


**TOP ALTITUDE:
ASSIGNED BY ATC**

- D-ATIS 128.35 269.9
- CLNC DEL 120.125 318.1
- CPDLC 121.9 348.6
- GND CON 121.9 348.6
- PORTLAND TOWER 118.7 257.8 (Rwy 10L-28R)
- 123.775 251.125 (Rwys 3-21, 10R-28L)
- PORTLAND DEP CON 118.1 284.6 (100°-279°)
- 124.35 299.2 (280°-099°)



- NOTE: Turbojet aircraft only.
- NOTE: RADAR required for non-GPS equipped aircraft.
- NOTE: RNAV 1.
- NOTE: DME/DME/IRU or GPS required.
- NOTE: For non-GPS equipped aircraft departing Rwys 28L/R, BTG DME must be operational.

TAKEOFF MINIMUMS

- Rwys 3, 21: NA - Air traffic.
- Rwys 10L/R: Standard with minimum climb of 500' per NM to 540, then minimum climb of 350' per NM to 3400.
- Rwys 28L/R: Standard with minimum climb of 500' per NM to 540, then minimum climb of 350' per NM to 2500.

NOTE: Chart not to scale.

DEPARTURE ROUTE DESCRIPTION

- TAKEOFF RUNWAYS 10L/R: Climb heading 103° to 540, then direct to RIVRR, then on depicted route to HRMNS, thence. . . .
 - TAKEOFF RUNWAY 28L: Climb heading 283° to 540, then direct PEGTY, then on depicted route to HRMNS, thence. . . .
 - TAKEOFF RUNWAY 28R: Climb heading 283°, intercept course 268° to PEGTY, then on depicted route to HRMNS, thence. . . .
-maintain assigned altitude, expect filed altitude 10 minutes after departure.

NW-1, 31 JAN 2019 to 28 FEB 2019

NW-1, 31 JAN 2019 to 28 FEB 2019