

HI-ILS or LOC/DME RWY 10R

LOC/DME I-PDX 110.5 Chan 42	APCH CRS 103°	Rwy ldg 11,000 THRE 23 Arpt Elev 31
---	-------------------------	--

JAL-330 [USAF]

PORTLAND INTL (KPDJ)

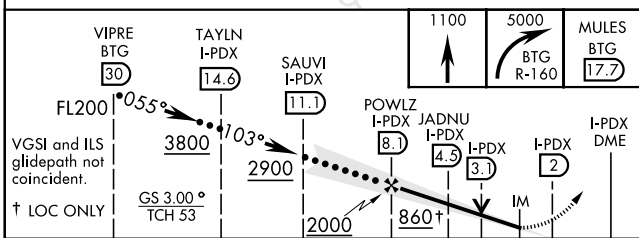
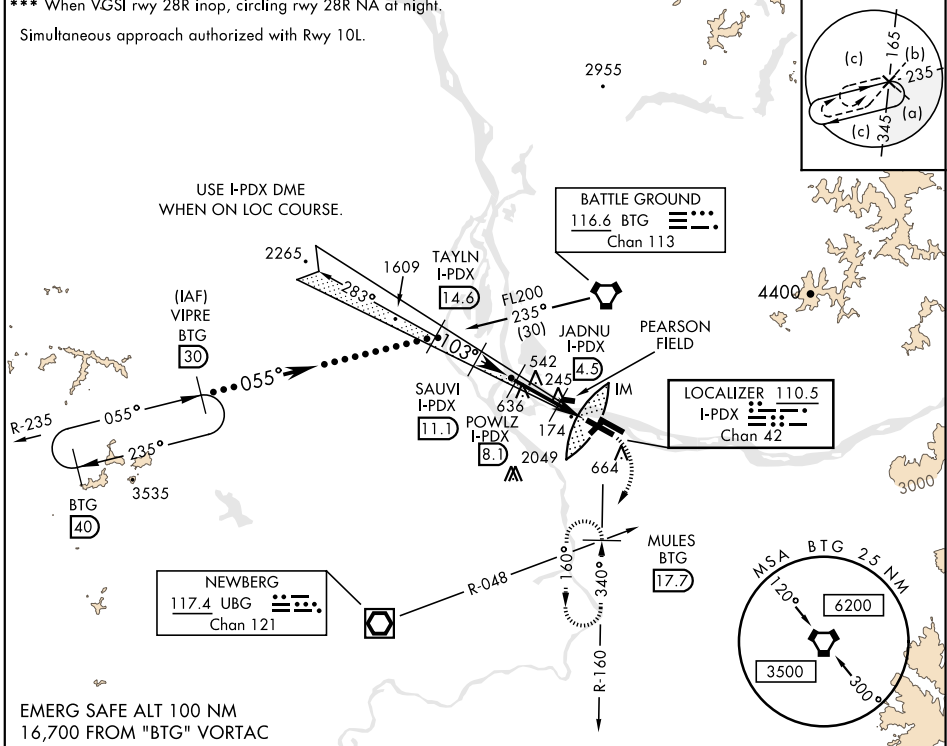
▲ * When ALS inop, increase RVR to 40 and vis to 3/4 mile.
 ** When ALS inop, increase CAT CDE RVR to 60 and vis to 1 1/2 miles.

▲ ALSF-2

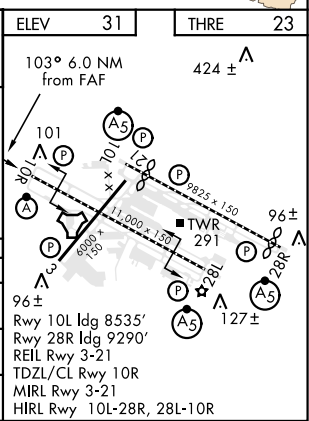
MISSED APPROACH: Climb to 1100 then climbing right turn to 5000 on BTG VORTAC R-160 to MULES/BTG 17.7 DME and hold, continue climb-in-hold to 5000.

ATIS 128.35 269.9	PORTLAND APP CON 118.1 284.6 (100°-279°) 124.35 299.2 (280°-099°)	PORTLAND TOWER 118.7 257.8 Rwy 10L-28R Rwy 3-21, 10R-28L	GND CON 121.9 348.6	CLNC DEL 120.125 318.1
-----------------------------	---	--	-------------------------------	----------------------------------

*** When VGSI rwy 28R inop, circling rwy 28R NA at night.
 Simultaneous approach authorized with Rwy 10L.



CATEGORY	C	D	E
S-ILS 10R*	223/18	200	(200-3/4)
S-LOC/DME 10R**	440/40	417 (500-3/4)	
CIRCLING***	760-2 729 (800-2)	980-3 949 (1000-3)	1140-3 1109 (1200-3)



HI-ILS or LOC/DME RWY 10R

NW-1, 31 JAN 2019 to 28 FEB 2019

NW-1, 31 JAN 2019 to 28 FEB 2019