

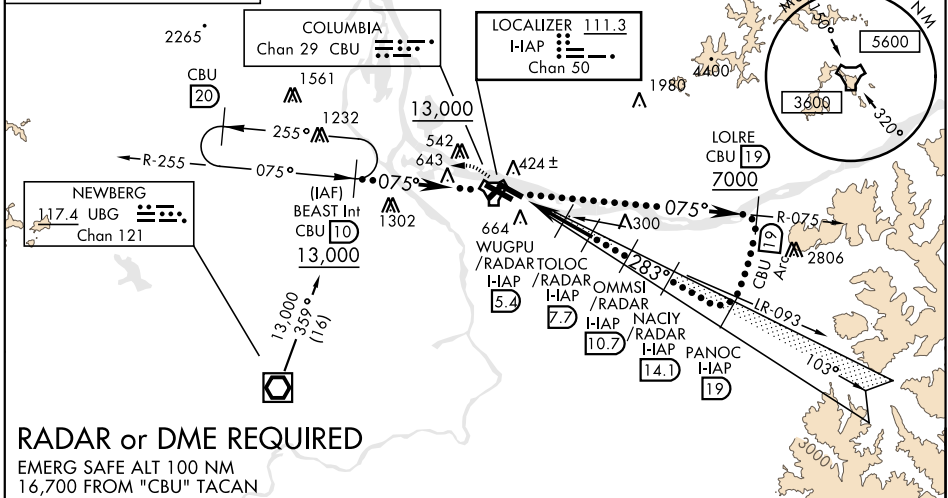
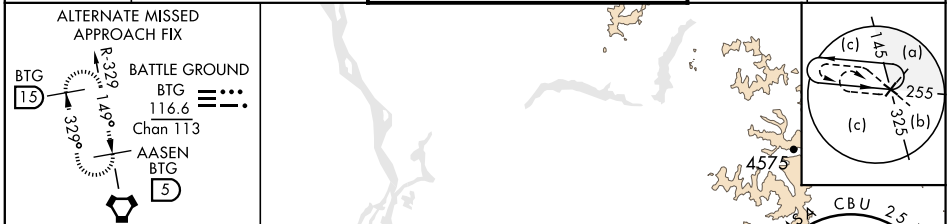
HI-ILS or LOC RWY 28R

LOC/DME I-IAP 111.3 Chan 50	APCH CRS 283°	Rwy ldg 9290 TDZE Arprt Elev 31	JAL-330 [USAF]	PORTLAND INTL (KPDX)
---	-------------------------	---	----------------	----------------------

▼ * When ALS inop, increase CAT E RVR to 40.
 ** When ALS inop, increase CAT E vis to 1½.

MALSR  MISSED APPROACH: Climb to 600 then climbing left turn to 4000 on CBU TACAN R-255 to BEAST INT/CBU 10 DME and hold, continue climb in holding to 4000.

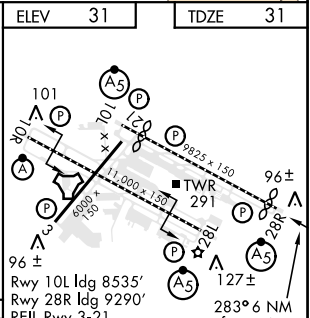
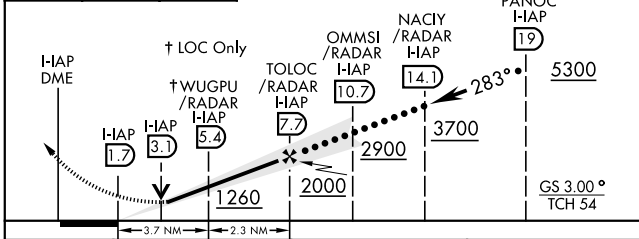
ATIS 128.35 269.9	PORTLAND APP CON 118.1 284.6 <small>(100°-279°)</small> 124.35 299.2 <small>(280°-099°)</small>	118.7 123.775	PORTLAND TOWER 257.8 Rwy 10L-28R Rwy 3-21, 10R-28L	GND CON 121.9 348.6	CLNC DEL 120.125 318.1
-----------------------------	---	--------------------------------	--	-------------------------------	----------------------------------



RADAR or DME REQUIRED

EMERG SAFE ALT 100 NM
16,700 FROM "CBU" TACAN

600	4000	BEAST CBU 10	VGSI and ILS glidepath not coincident VGSI Angle 3.00/TCH 70	Use I-IAP DME when on LOC course.	ELEV 31	TDZE 31
-----	------	--------------	---	-----------------------------------	---------	---------



CATEGORY	C	D	E
S-ILS 28R*	281/24	250	(300-½)
S-LOC 28R**	560/55	529	(600-1)
CIRCLING	1060-3		1140-3
	1029 (1100-3)		1109 (1200-3)

LOC FAF to MAP 6 NM					
Knots	120	140	160	180	200
Min:Sec	3:00	2:34	2:15	2:00	1:48

HI-ILS or LOC RWY 28R

NW-1, 31 JAN 2019 to 28 FEB 2019

NW-1, 31 JAN 2019 to 28 FEB 2019