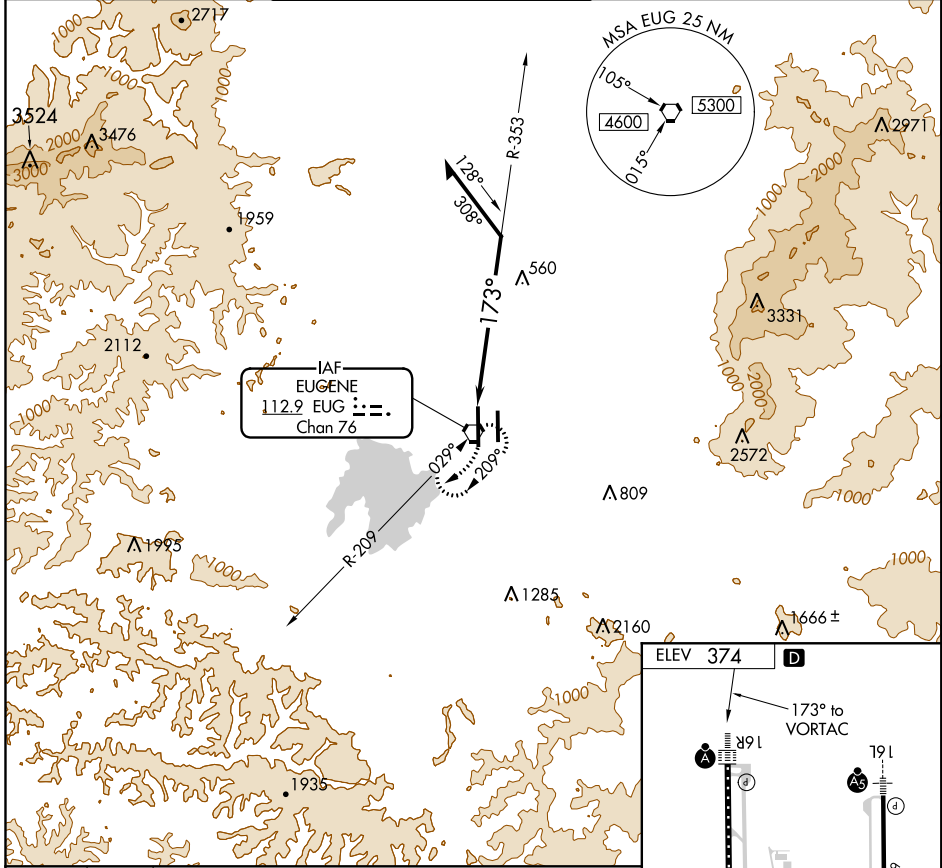


VORTAC EUG <b>112.9</b> Chan <b>76</b>	APP CRS <b>173°</b>	Rwy Idg TDZE Apt Elev <b>N/A</b> <b>N/A</b> <b>374</b>
--	------------------------	---

**VOR-A**  
MAHLON SWEET FIELD (EUG)

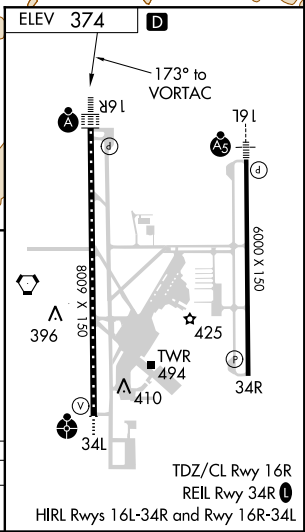
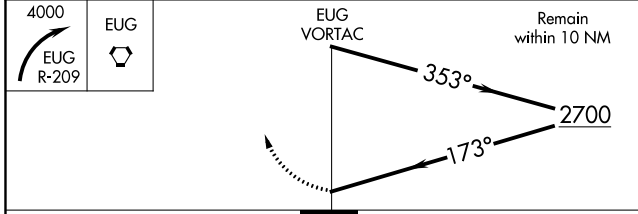
**▲** MISSED APPROACH: Climbing right turn to 4000 on EUG R-209 then direct EUG VORTAC and hold.

ATIS <b>125.225</b>	CASCADE APP CON* <b>119.6 348.7</b>	EUGENE TOWER* <b>118.9</b> (CTAF) <b>0 371.9</b> (Rwy 16R/34L) <b>124.15 371.9</b> (Rwy 16L/34R)	GND CON <b>121.7 269.5</b>	CLNC DEL <b>121.7 269.5</b>	UNICOM <b>122.95</b>
------------------------	--	--	-------------------------------	--------------------------------	-------------------------



NW-1, 31 JAN 2019 to 28 FEB 2019

NW-1, 31 JAN 2019 to 28 FEB 2019



CATEGORY	A	B	C	D
<b>C</b> CIRCLING	1200-1¼	826 (900-1¼)	1200-2½ 826 (900-2½)	1200-2¾ 826 (900-2¾)

TDZ/CL Rwy 16R  
REIL Rwy 34R  
HIRL Rws 16L-34R and Rwy 16R-34L