

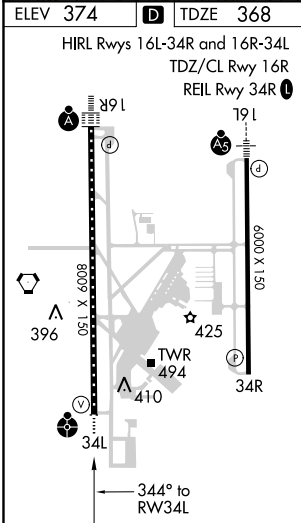
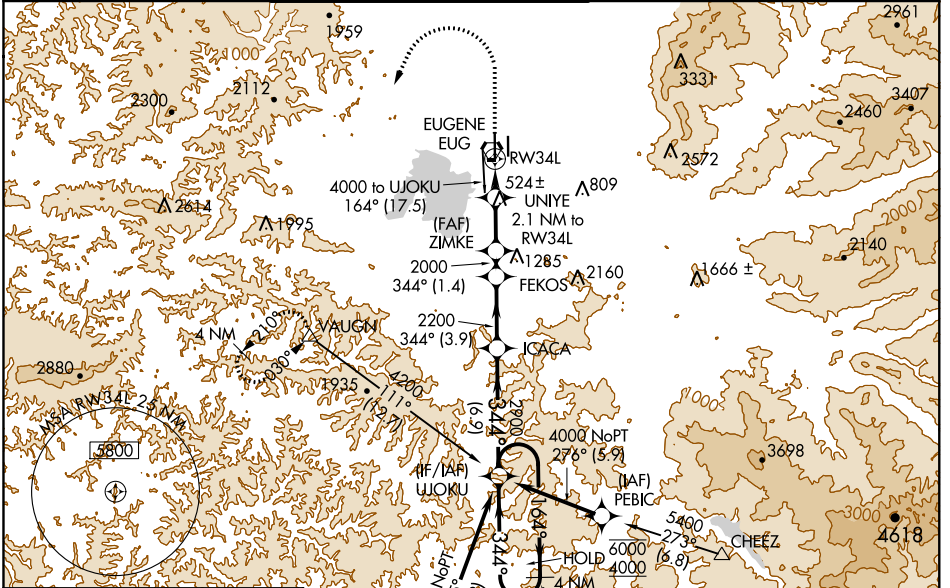
WAAS CH 45600 W34A	APP CRS 344°	Rwy Idg TDZE Apt Elev	8009 368 374
--	------------------------	-----------------------------	---

RNAV (GPS) Y RWY 34L

MAHLON SWEET FIELD (EUG)

RNP APCH.	<p>Simultaneous approach authorized. LNAV procedure NA during simultaneous operations. Use of FD or AP providing RNAV track guidance required during simultaneous operations. For uncompensated Baro-VNAV systems, LNAV/VNAV NA below -10°C or above 54°C. For inop ALS increase LNAV/VNAV visibility Cats A-B to RVR 4500. Inop table does not apply to LPV minimums.</p>	<p>ODALS</p>	<p>MISSED APPROACH: Climb to 1500, then climbing left turn to 4000 direct VAUGN and hold.</p>
-----------	--	--------------	---

ATIS 125.225	CASCADE APP CON★ 119.6 348.7	EUGENE TOWER★ 118.9 (CTAF) 371.9 (Rwy 16R/34L) 124.15 371.9 (Rwy 16L/34R)	GND CON 121.7 269.5	CLNC DEL 121.7 269.5	UNICOM 122.95
------------------------	--	--	-------------------------------	--------------------------------	-------------------------



ELEV 374	TDZE 368				
HIRL Rwys 16L-34R and 16R-34L TDZ/CL Rwy 16R REIL Rwy 34R					
<p>1500 4000 VAUGN</p> <p>ZIMKE FEKOS ICACA UJOKU 4 NM Holding Pattern</p> <p>*LNAV only *1.1 NM to RWY 34L *2.1 NM to RWY 34L</p> <p>164° → 6000 ← 344° 4000</p> <p>2900</p> <p>*1080</p> <p>2000</p> <p>GP 3.00° TCH 53</p> <p>← 1.1 NM 1 NM 2.9 NM 1.4 NM ← 3.9 NM ← 6.9 NM</p>					
CATEGORY	A	B	C	D	
LPV DA		568/40	200 (200-¾)		
LNAV/VNAV DA		657/40	289 (300-¾)		
LNAV MDA	760/40	392 (400-¾)	760/50	392 (400-1)	
CIRCLING	820-1 446 (500-1)	840-1 466 (500-1)	1000-1¾ 626 (700-1¾)	1140-2½ 766 (800-2½)	

NW-1, 31 JAN 2019 to 28 FEB 2019

NW-1, 31 JAN 2019 to 28 FEB 2019