

WAAS CH 81827 W16A	APP CRS 164°	Rwy ldg TDZE Apt Elev 6000 369 374
--	------------------------	--

RNAV (GPS) Y RWY 16L

MAHLON SWEET FIELD (EUG)

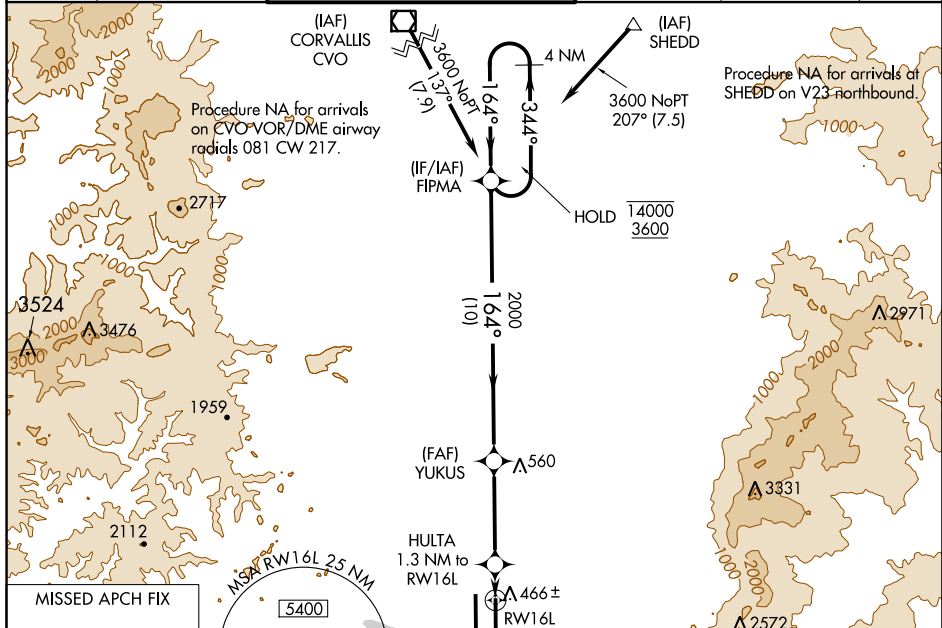
RNP APCH.

Simultaneous approach authorized. LNAV procedure NA during simultaneous operations. Use of FD or AP providing RNAV track guidance required during simultaneous operations. For uncompensated Baro-VNAV systems, LNAV/VNAV NA below -10°C or above 54°C. For Inop ALS, increase LNAV/VNAV all Cats visibility to ¾ SM, increase LNAV Cat C/D visibility to 1 SM.



MISSED APPROACH: Climb to 5500 direct WELID and on track 160° to SAGIN and hold, continue climb-in-hold to 5500.

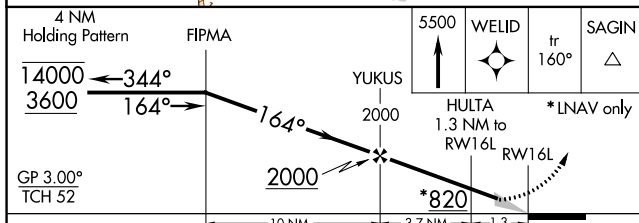
ATIS 125.225	CASCADE APP CON* 119.6 348.7	EUGENE TOWER* 118.9 (CTAF) 371.9 (Rwy 16R/34L) 124.15 371.9 (Rwy 16L/34R)	GND CON 121.7 269.5	CLNC DEL 121.7 269.5	UNICOM 122.95
------------------------	--	--	-------------------------------	--------------------------------	-------------------------



NW-1, 31 JAN 2019 to 28 FEB 2019

NW-1, 31 JAN 2019 to 28 FEB 2019

MISSED APCH FIX	SAGIN Δ 156°/3.36° 5 NM	MSA RW16L 25 NM	5400	WELID Δ 160° (13.8)	809 Δ
-----------------	--------------------------------	-----------------	------	----------------------------	--------------



GP 3.00° TCH 52	10 NM		3.7 NM		1.3
CATEGORY	A	B	C	D	
LPV DA	569-1/2		200 (200-1/2)		
LNAV/VNAV DA	632-1/2		263 (300-1/2)		
LNAV MDA	720-1/2		351 (400-1/2)		720-5/8
CIRCLING	820-1 446 (500-1)	840-1 466 (500-1)	1000-1 3/4 626 (700-1 3/4)	1140-2 1/2 766 (800-2 1/2)	

