

RNAV (RNP) Z RWY 34R

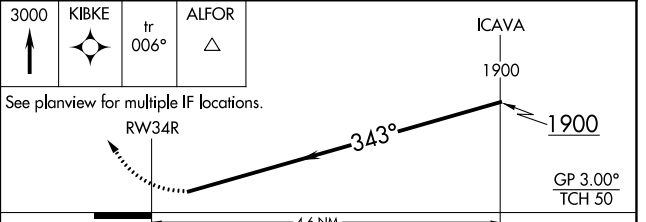
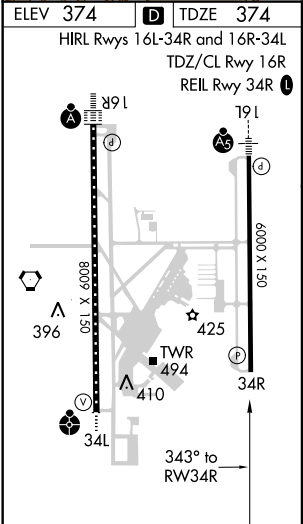
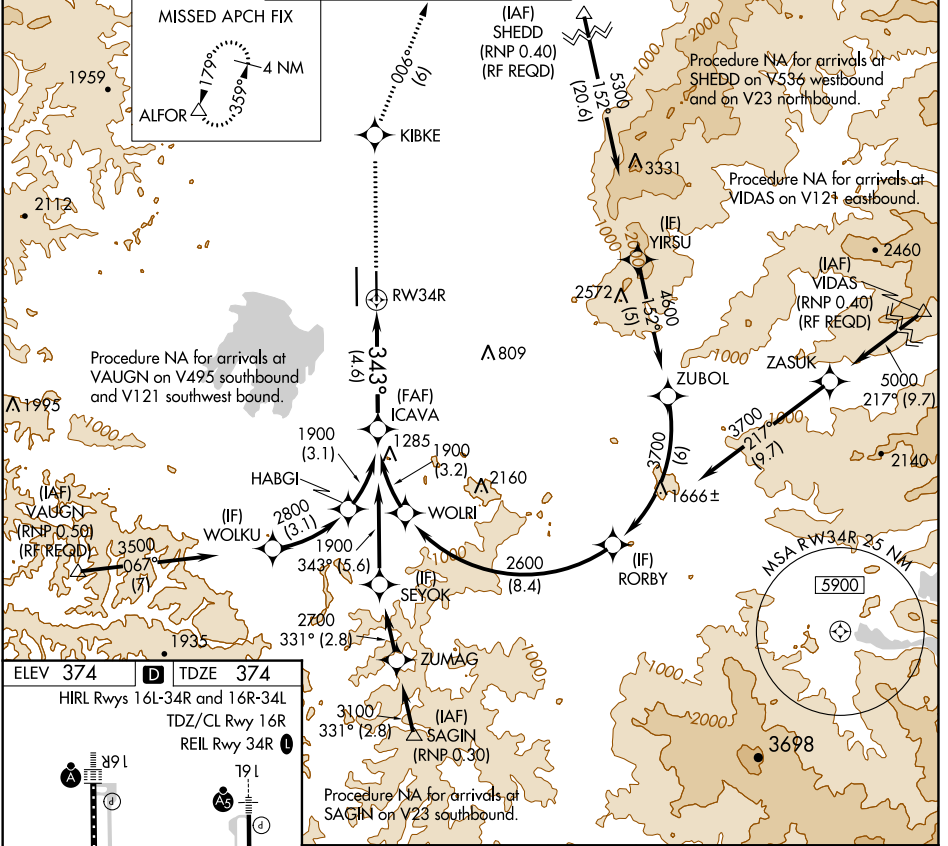
MAHLON SWEET FIELD (EUG)

APP CRS 343°	Rwy Idg TDZE Apt Elev	6000 374 374
------------------------	-----------------------------	---

▼ For uncompensated Baro-VNAV systems, procedure NA below -9°C (16°F) or above 54°C (130°F). Simultaneous approach authorized. GPS required.

MISSED APPROACH: Climb to 3000 direct KIBKE and on track 006° to ALFOR and hold.

ATIS 125.225	CASCADE APP CON ★ 119.6 348.7	EUGENE TOWER ★ 118.9 (CTAF) 0 371.9 (Rwy 16R/34L) 124.15 371.9 (Rwy 16L/34R)	GND CON 121.7 269.5	CLNC DEL 121.7 269.5	UNICOM 122.95
------------------------	---	--	-------------------------------	--------------------------------	-------------------------



CATEGORY	A	B	C	D
RNP 0.30 DA		748-1	374 (400-1)	

AUTHORIZATION REQUIRED

NW-1, 31 JAN 2019 to 28 FEB 2019

NW-1, 31 JAN 2019 to 28 FEB 2019