

APP CRS	Rwy Idg	8009
343°	TDZE	368
	Apt Elev	374

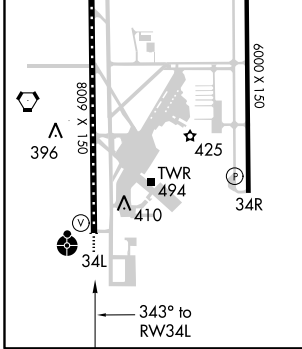
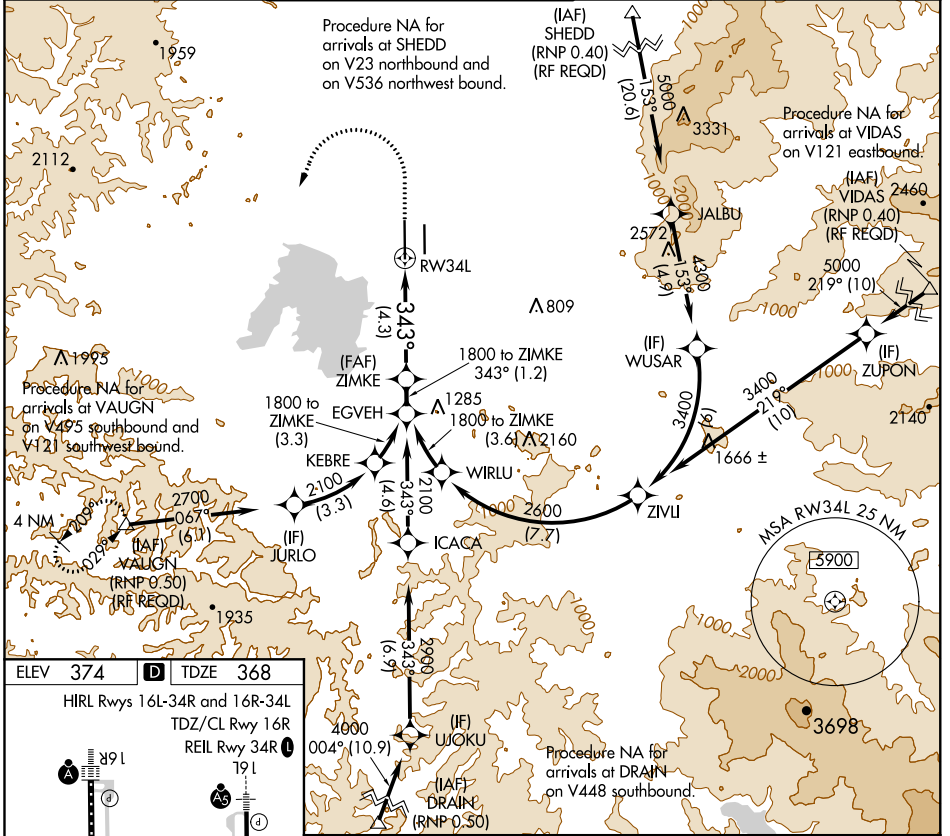
RNAV (RNP) Z RWY 34L

MAHLON SWEET FIELD (EUG)

▼ For uncompensated Baro-VNAV systems, procedure NA below -9°C (16°F) or above 54°C (130°F). Simultaneous approach authorized. GPS required.

ODALS MISSED APPROACH: Climb to 1500, then climbing left turn to 4000 direct VAUGN and hold.

ATIS	CASCADE APP CON*	EUGENE TOWER*	GND CON	CLNC DEL	UNICOM
125.225	119.6 348.7	118.9 (CTAF) 0 371.9 (Rwy 16R/34L) 124.15 371.9 (Rwy 16L/34R)	121.7 269.5	121.7 269.5	122.95



1500	4000	VAUGN	See planview for multiple IF locations.
CATEGORY	A	B	C
RNP 0.30 DA	759/50 391 (400-1)		
AUTHORIZATION REQUIRED			

NW-1, 31 JAN 2019 to 28 FEB 2019

NW-1, 31 JAN 2019 to 28 FEB 2019