

APP CRS	Rwy Idg	8009
164°	TDZE	364
	Apt Elev	374

RNAV (RNP) Z RWY 16R

MAHLON SWEET FIELD (EUG)

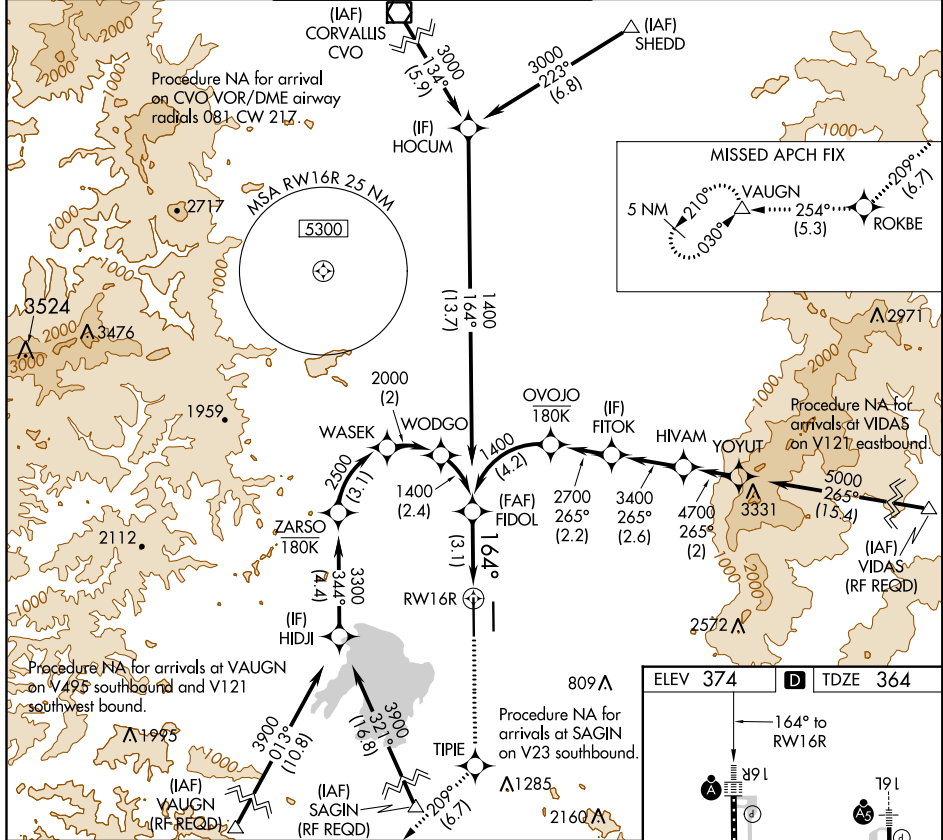
RNP AR APCH.

For uncompensated Baro-VNAV systems, procedure NA below -9°C or above 54°C. Simultaneous approach authorized. For inop ALS, increase RNP 0.17 all Cats visibility to RVR 4000 and RNP 0.30 all Cats visibility to RVR 5500.

ALSF-2

MISSED APPROACH: Climb to 5000 direct TIPE, and on track 209° to ROKBE, and track 254° to VAUGN and hold, continue climb-in-hold to 5000.

ATIS	CASCADE APP CON	EUGENE TOWER	GND CON	CLNC DEL	UNICOM
125.225	119.6 348.7	118.9 (CTAF) 371.9 (Rwy 16R/34L) 124.15 371.9 (Rwy 16L/34R)	121.7 269.5	121.7 269.5	122.95



NW-1, 31 JAN 2019 to 28 FEB 2019

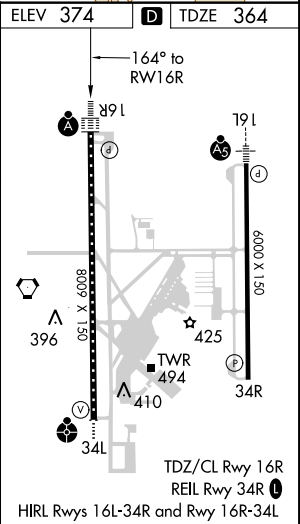
NW-1, 31 JAN 2019 to 28 FEB 2019

FIDOL	5000	TIPE	ROKBE	VAUGN
1400	↑	tr 209°	tr 254°	△
1400				

GP 3.00° TCH 51

See planview for multiple IF locations.

3.1 NM



CATEGORY	A	B	C	D
RNP 0.17 DA		614/24	250 (300-½)	
RNP 0.30 DA		711/30	347 (400-¾)	

AUTHORIZATION REQUIRED