

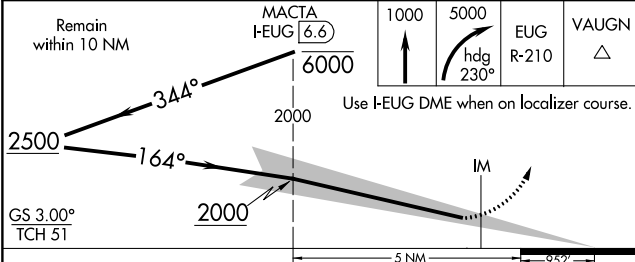
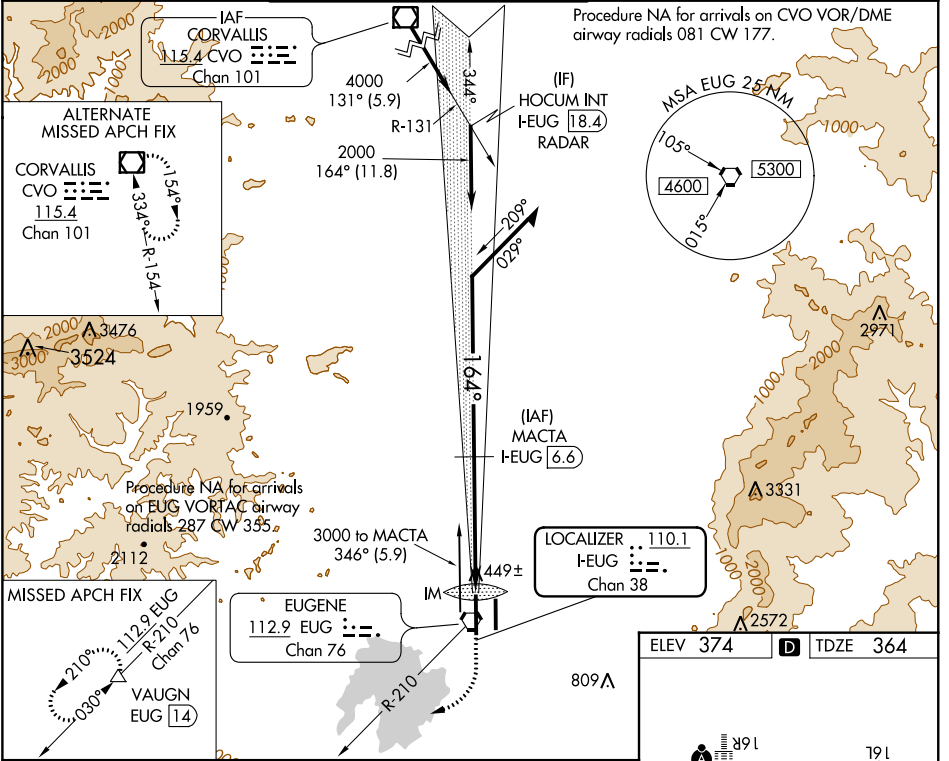
LOC/DME I-EUG 110.1 Chan 38	APP CRS 164°	Rwy Idg 8009 TDZE 364 Apt Elev 374
---	------------------------	---

ILS RWY 16R (SA CAT I)

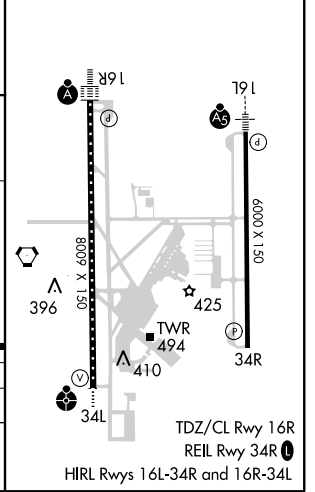
MAHLON SWEET FIELD (EUG)

DME required.		ALSIF-2	MISSED APPROACH: Climb to 1000 then climbing right turn to 5000 on heading 230° and on EUG VORTAC R-210 to VAUGN/EUG 14 DME and hold, continue climb-in-hold to 5000.
Simultaneous approach authorized. Requires specific OPSPEC, MSPEC, or LOA approval and use of HUD to DH. SA Cat I minimums NA when control tower closed.			

ATIS 125.225	CASCADE APP CON * 119.6 348.7	EUGENE TOWER * 118.9 (CTAF) 371.9 (Rwy 16R/34L) 124.15 371.9 (Rwy 16L/34R)	GND CON 121.7 269.5	CLNC DEL 121.7 269.5	UNICOM 122.95
------------------------	---	---	-------------------------------	--------------------------------	-------------------------



ELEV 374	TDZE 364
----------	----------



CATEGORY	A	B	C	D
S-ILS 16R	RA 164/14 150 DA 514			

SA CATEGORY I ILS - SPECIAL AIRCREW & AIRCRAFT CERTIFICATION REQUIRED

NW-1, 31 JAN 2019 to 28 FEB 2019

NW-1, 31 JAN 2019 to 28 FEB 2019