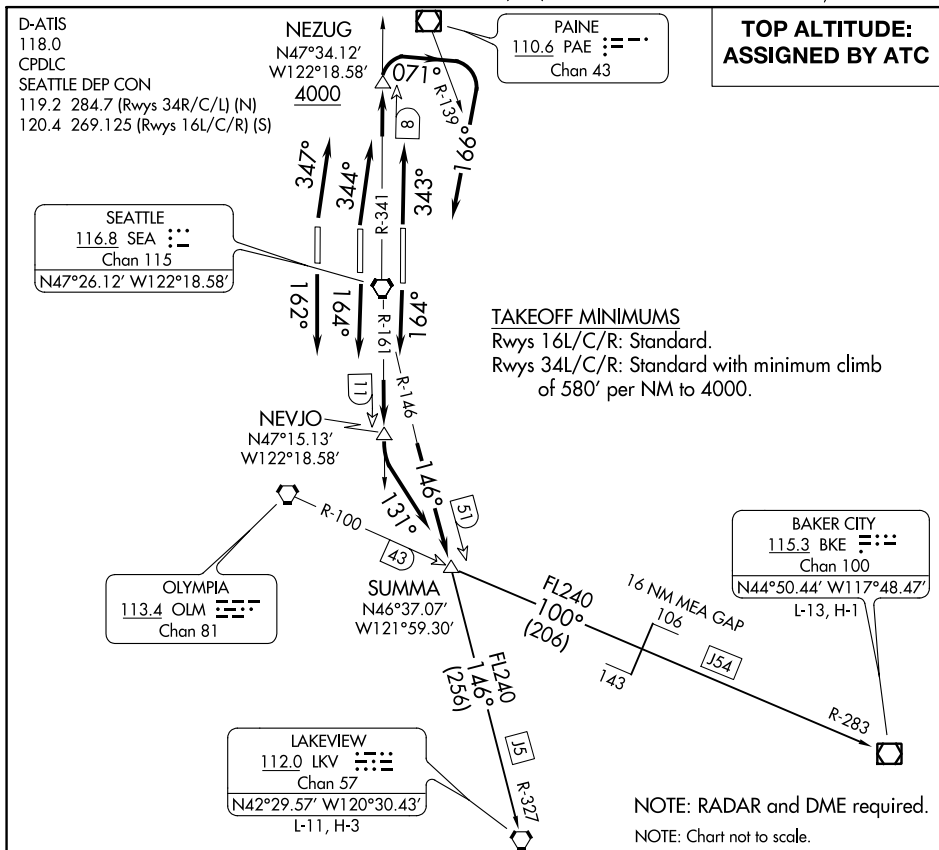


SUMMA ONE DEPARTURE



TAKEOFF MINIMUMS
 Rwy 16L/C/R: Standard.
 Rwy 34L/C/R: Standard with minimum climb of 580' per NM to 4000.

**TOP ALTITUDE:
 ASSIGNED BY ATC**

NW-1, 03 JAN 2019 to 31 JAN 2019

NW-1, 03 JAN 2019 to 31 JAN 2019

DEPARTURE ROUTE DESCRIPTION

TAKEOFF RUNWAY 34L: Climb heading 347° and SEA R-341, thence. . . .
TAKEOFF RUNWAY 34C: Climb heading 344° and SEA R-341, thence. . . .
TAKEOFF RUNWAY 34R: Climb heading 343° and SEA R-341, thence. . . .
 . . . to cross NEZUG at or above 4000, then right turn heading 071° to cross the PAE R-139, then right turn heading 166° to intercept SEA R-146 to SUMMA INT, then on assigned transition.

TAKEOFF RUNWAYS 16L/C: Climb heading 164° and SEA R-161, thence. . . .
TAKEOFF RUNWAY 16R: Climb heading 162° and SEA R-161, thence. . . .

. . . to NEVJO, then left turn heading 131° to intercept the SEA R-146 to SUMMA INT, then on assigned transition.

BAKER CITY TRANSITION (SUMMA1.BKE): From over SUMMA INT on OLM R-100 and BKE R-283 to BKE VOR/DME.

LAKEVIEW TRANSITION (SUMMA1.LKV): From over SUMMA INT on SEA R-146 and LKV R-327 to LKV VORTAC.

SUMMA ONE DEPARTURE