

WAAS CH 45810 W34A	APP CRS 344°	Rwy Idg TDZE 379 Apt Elev 433
--	------------------------	---

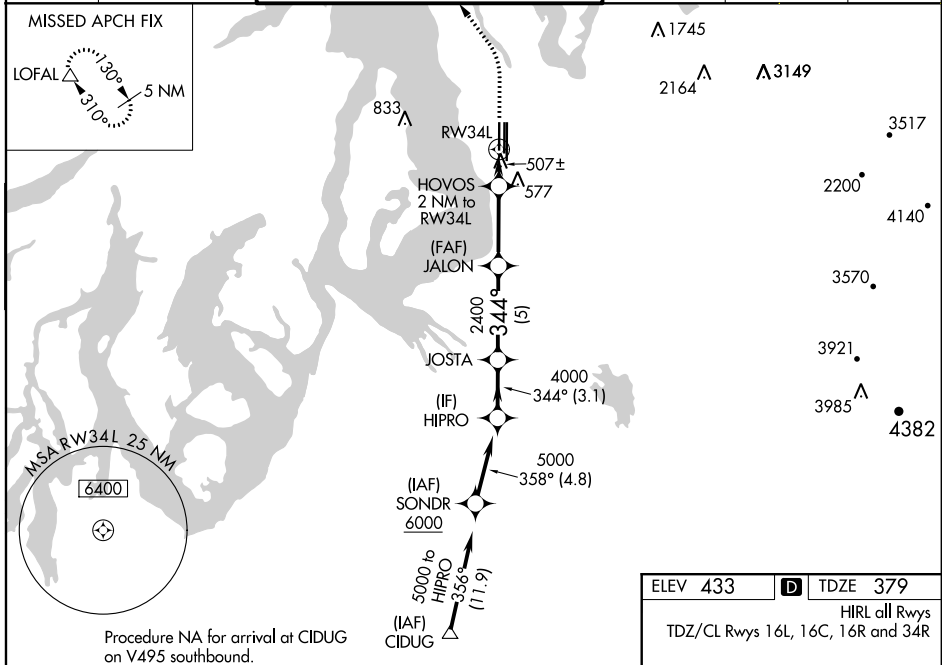
RNAV (GPS) Y RWY 34L

SEATTLE-TACOMA INTL (SEA)

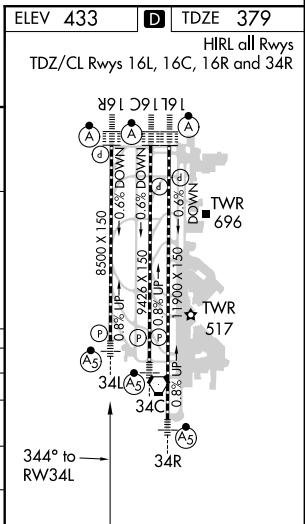
▽ DME/DME RNP -0.3 NA. For uncompensated Baro-VNAV systems, LNAV/VNAV NA below -6°C (22°F) or above 54°C (130°F). Use of FD or AP providing RNAV track guidance required during simultaneous operations. LNAV procedure NA during simultaneous operations. Simultaneous approach authorized with Rwy 34R/C. For inoperative ALS, increase LNAV/VNAV all Cats visibility to 1 3/8 SM, increase LNAV Cat A and B visibility to RVR 5500 and Cat C and D visibility to 1 3/8 SM. #RVR 1800 authorized with use of FD or AP or HUD to DA.

MALSRL
MISSED APPROACH: Climb to 900 then climbing left turn to 5000 direct LOFAL and hold.

D-ATIS 118.0	SEATTLE APP CON 133.65 273.45	SEATTLE TOWER 119.9 239.3 (Rwys 16L, 16C, 34C, 34R) 120.95 239.3 (Rwys 16R, 34L)	GND CON 121.7	CLNC DEL 128.0	CPDLC
------------------------	---	--	-------------------------	--------------------------	-------



HIPRO		VGSI and RNAV glidepath not coincident (VGSI Angle 3.00/TCH 75).		900	5000	LOFAL
5000		344°		*LNAV only		
4000		2400		*1.4 NM to RWY 34L		
GP 3.00°		2400		*1040		
TCH 55		3.1 NM		5 NM		4.3 NM
CATEGORY	A	B	C	D		
LPV DA#	579/24		200 (200-1/2)			
LNAV/VNAV DA	808/40		429 (400-3/4)			
LNAV MDA	860/24		481 (500-1/2)		860/55 481 (500-1)	
CIRCLING	1000-1		567 (600-1)		1000-2 567 (600-2)	



NW-1, 03 JAN 2019 to 31 JAN 2019

NW-1, 03 JAN 2019 to 31 JAN 2019