


WAAS CH 61010 W16B	APP CRS 164°	Rwy Idg 9426 TDZE 430 Apt Elev 433
--	------------------------	---

RNAV (GPS) Y RWY 16C

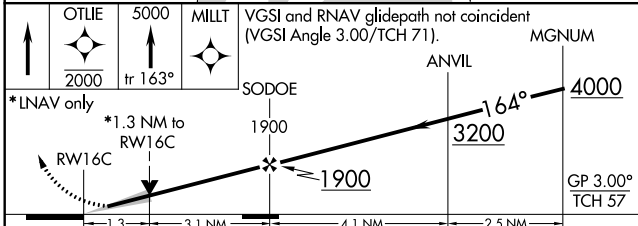
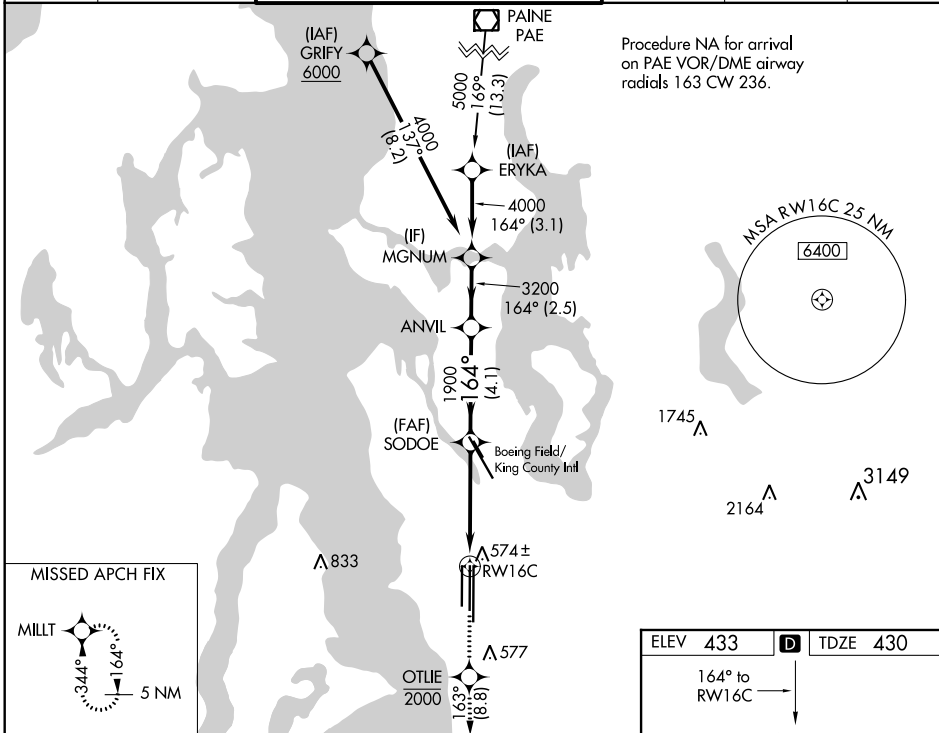
SEATTLE-TACOMA INTL (SEA)

⚠ For uncompensated Baro-VNAV systems, LNAV/VNAV NA below -6°C (22°F) or above 54°C (130°F). DME/DME RNP-0.3 NA. For inop ALS, increase LNAV Cats C/D visibility to 1 $\frac{1}{2}$. See additional requirements on adjacent information page.

ALSF-2 

MISSED APPROACH: Climb direct OTLIE to cross OTLIE at or below 2000, then climb to 5000 on track 163° to MILLT and hold, continue climb-in-hold to 5000.

D-ATIS 118.0	SEATTLE APP CON 133.65 273.45	SEATTLE TOWER 119.9 239.3 (Rwys 16L, 16C, 34C, 34R) 120.95 239.3 (Rwys 16R, 34L)	GND CON 121.7	CLNC DEL 128.0	CPDLC
------------------------	---	--	-------------------------	--------------------------	-------



CATEGORY	A	B	C	D
LPV DA		630/18	200 (200- $\frac{1}{2}$)	
LNAV/VNAV DA		840/44	410 (500- $\frac{3}{8}$)	
LNAV MDA	920/24	490 (500- $\frac{1}{2}$)	920/50	490 (500-1)
C CIRCLING	1000-1	567 (600-1)	1000-1 $\frac{1}{2}$ 567 (600-1 $\frac{1}{2}$)	1000-2 567 (600-2)

Procedure NA for arrival on PAE VOR/DME airway radials 163 CW 236.

