

APP CRS 344°	Rwy Idg 9426
	TDZE 387
	Apft Elev 433

RNAV (RNP) Z RWY 34C

SEATTLE-TACOMA INTL (SEA)

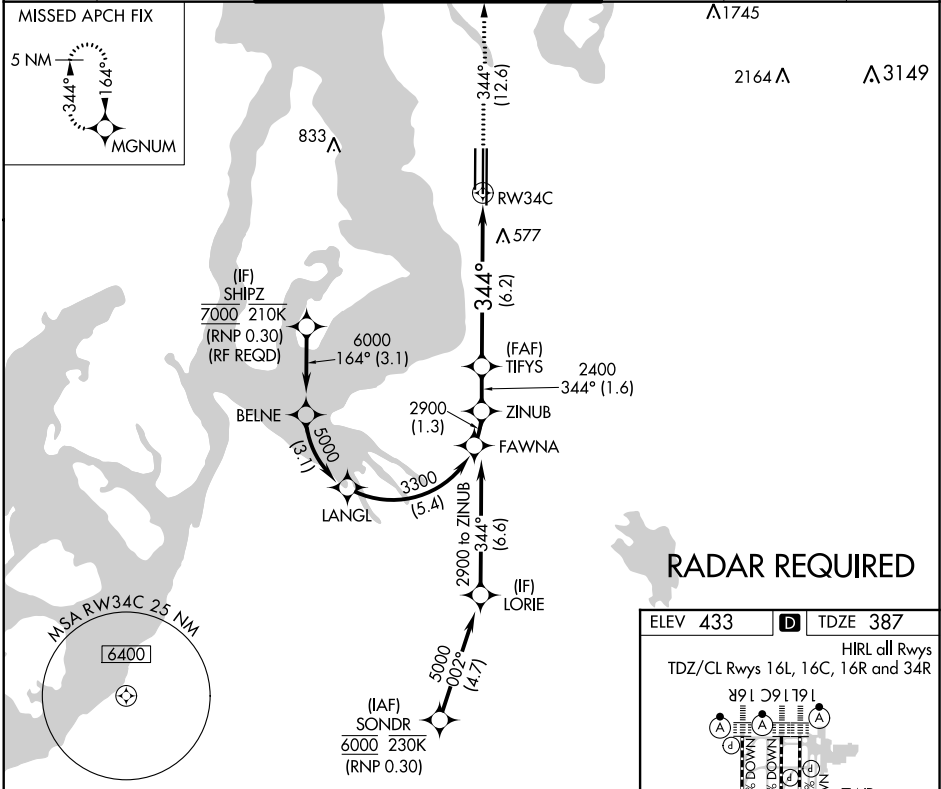
GPS required. For uncompensated Baro-VNAV systems, procedure NA below -6°C (22°F) or above 54°C (130°F). Simultaneous approach authorized with Rwy 34L except arrivals at SHIPZ. Use of FD or AP providing RNAV track guidance required during simultaneous operations.

MALSR

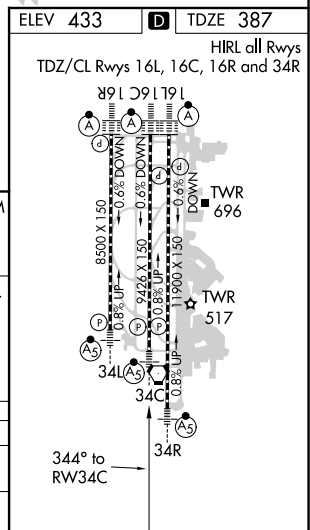


MISSED APPROACH: Climb to 5000 on track 344° to MGNUM and hold, continue climb-in-hold to 5000.

D-ATIS 118.0	SEATTLE APP CON 133.65 273.45	SEATTLE TOWER 119.9 239.3 (Rwys 16L, 16C, 34C, 34R) 120.95 239.3 (Rwys 16R, 34L)	GND CON 121.7	CLNC DEL 128.0	CPDLC
------------------------	---	--	-------------------------	--------------------------	-------



RADAR REQUIRED



ZINUB	VGSI and RNAV glidepath not coincident (VGSI Angle 3.00/TCH 73).		5000	MGNUM
2900	344°	2400	tr 344°	
GP 3.00°		2400		See planview for multiple IF locations.
TCH 56	1.6 NM	6.2 NM		RW34C
CATEGORY	A	B	C	D
RNP 0.30 DA	808/50 421 (400-1)			
AUTHORIZATION REQUIRED				

NW-1, 03 JAN 2019 to 31 JAN 2019

NW-1, 03 JAN 2019 to 31 JAN 2019