

LOC/DME I-SEA 110.3 Chan 40	APP CRS 344°	Rwy Idg 11900 9426	34R	34C
		TDZE 372 387		
		Apt Elev 433 433		

ILS or LOC RWY 34R

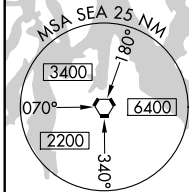
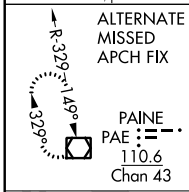
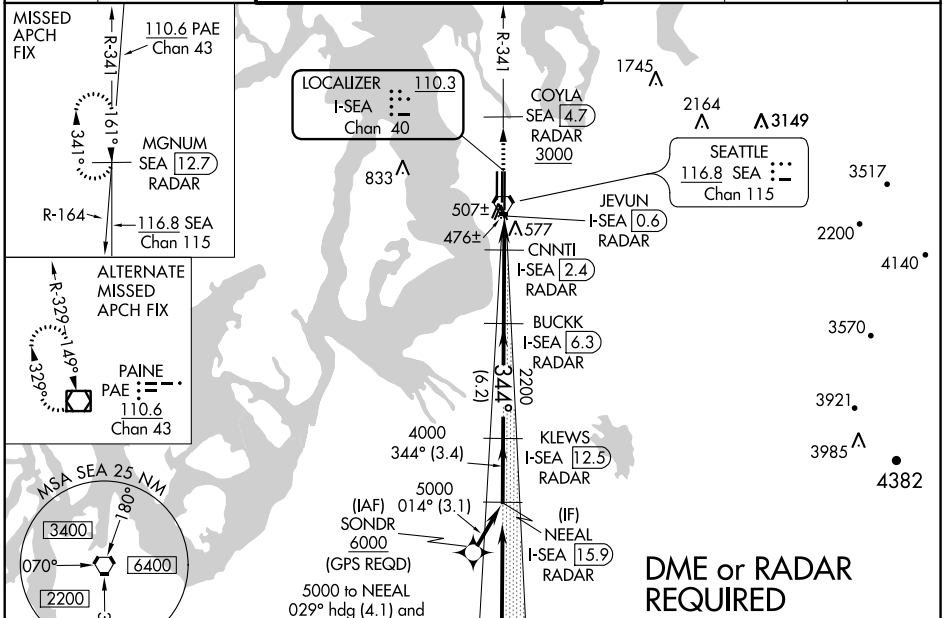
SEATTLE-TACOMA INTL (SEA)

⚠ Inoperative table does not apply to Sidestep 34C Cats A and B. DME or RADAR required. Simultaneous approach authorized with Rwy 34L.

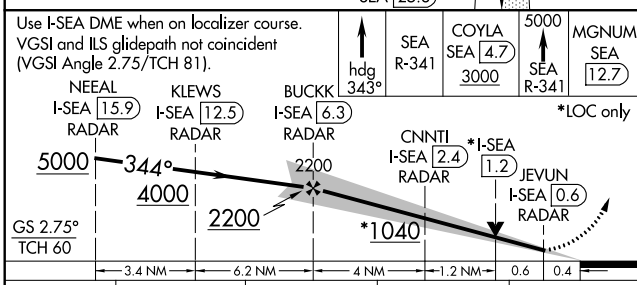


MISSED APPROACH: Climb on heading 343° and outbound on SEA VORTAC R-341 to cross COYLA/SEA 4.7 DME/RADAR at or above 3000 then climb to 5000 on SEA VORTAC R-341 to MGNUM/SEA 12.7 DME/RADAR and hold, continue climb-in-hold to 5000.

D-ATIS 118.0	SEATTLE APP CON 133.65 273.45	SEATTLE TOWER 119.9 239.3 (Rwys 16L, 16C, 34C, 34R) 120.95 239.3 (Rwys 16R, 34L)	GND CON 121.7	CLNC DEL 128.0	CPDLC
------------------------	---	--	-------------------------	--------------------------	-------



Procedure NA for arrivals at CIDUG on V495 southbound.



DME or RADAR REQUIRED

ELEV 433	TDZE 34R 372	TDZE 34C 387
344° 6.1 NM from FAF		
HIRL all Rwws TDZ/CL Rwys 16L, 16C, 16R and 34R		
FAF to MAP 5.8 NM		
Knots	60	90 120 150 180
Min:Sec	5:48	3:52 2:54 2:19 1:56

CATEGORY	A	B	C	D
S-ILS 34R	572/18 200 (200-½)			
S-LOC 34R	720/24 348 (300-½) 720/35 348 (300-⅝)			
SIDESTEP 34C	760/50 373 (400-1)			
CIRCLING	1000-1 567 (600-1) 1000-1½ 567 (600-1½) 1000-2 567 (600-2)			

NW-1, 03 JAN 2019 to 31 JAN 2019

NW-1, 03 JAN 2019 to 31 JAN 2019