

LOC/DME I-CJL 110.75 Chan 44 (Y)	APP CRS 164°	Rwy Idg TDZE Apt Elev	8500 415 433
---	------------------------	-----------------------------	---

ILS RWY 16R (SA CAT I)

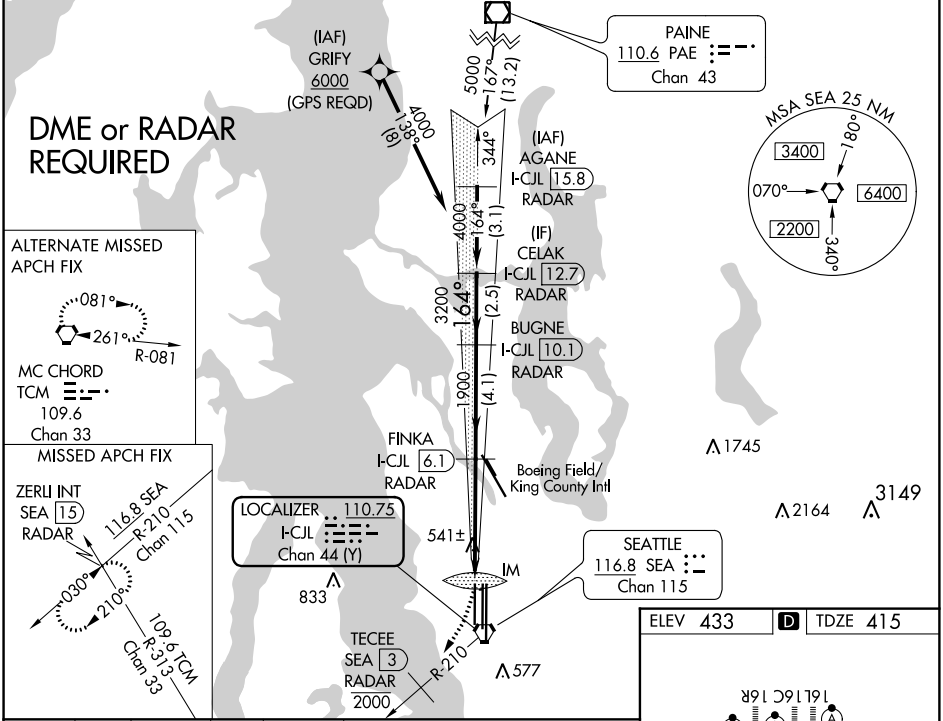
SEATTLE-TACOMA INTL (SEA)

Simultaneous approach authorized with Rwy 16L. DME or RADAR required. Requires specific OPSPEC, MSPEC, or LOA approval and use of HUD to DH.

ALSIF-2

MISSED APPROACH: Climb to 900 then climb on heading 195° and on SEA VORTAC R-210 to cross TECEE/SEA 3 DME/RADAR at or below 2000 then climb to 5000 on SEA VORTAC R-210 to ZERLI INT/SEA 15 DME/RADAR and hold, continue climb-in-hold to 5000.

D-ATIS 118.0	SEATTLE APP CON 133.65 273.45	SEATTLE TOWER 119.9 239.3 (Rwys 16L, 16C, 34C, 34R) 120.95 239.3 (Rwys 16R, 34L)	GND CON 121.7	CLNC DEL 128.0	CPDLC
------------------------	---	---	-------------------------	--------------------------	-------



DME or RADAR REQUIRED

ALTERNATE MISSED APCH FIX

081°
261°
R-081

MC CHORD
TCM
109.6
Chan 33

MISSED APCH FIX

ZERLI INT
SEA 15
RADAR
116.8 SEA
R-210
Chan 115

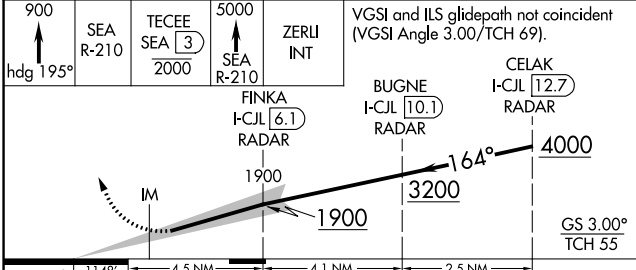
109.6 TCM
R-313
Chan 33

LOCALIZER 110.75
I-CJL
Chan 44 (Y)

SEATTLE 116.8 SEA
Chan 115

LOCALIZER 110.75
I-CJL
Chan 44 (Y)

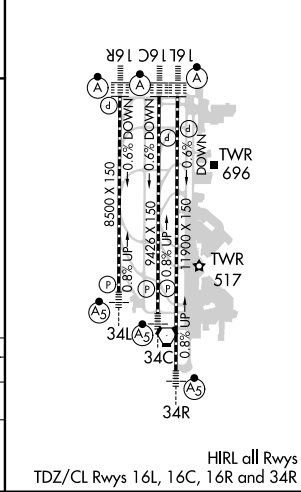
ELEV 433	D TDZE 415
----------	-------------------



1148'	4.5 NM	4.1 NM	2.5 NM
-------	--------	--------	--------

CATEGORY	A	B	C	D
----------	---	---	---	---

S-ILS 16R	RA 176/14 150 DA 565			
-----------	----------------------	--	--	--



NW-1, 03 JAN 2019 to 31 JAN 2019

NW-1, 03 JAN 2019 to 31 JAN 2019

HIRL all Rwys
TDZ/CL Rwys 16L, 16C, 16R and 34R