


LOC/DME I-SNQ 110.3 Chan 40	APP CRS 164°	Rwy Idg 11900 TDZE 433 Apt Elev 433
---	------------------------	--

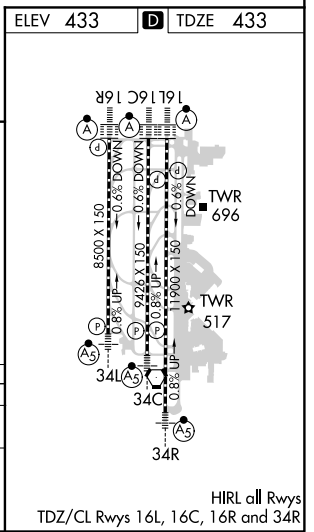
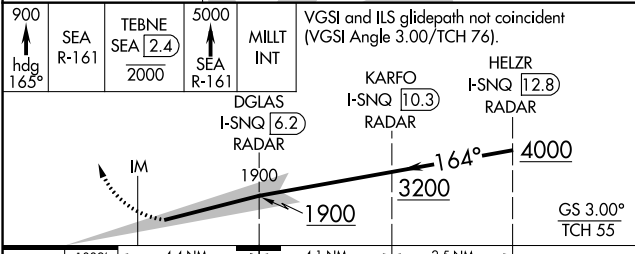
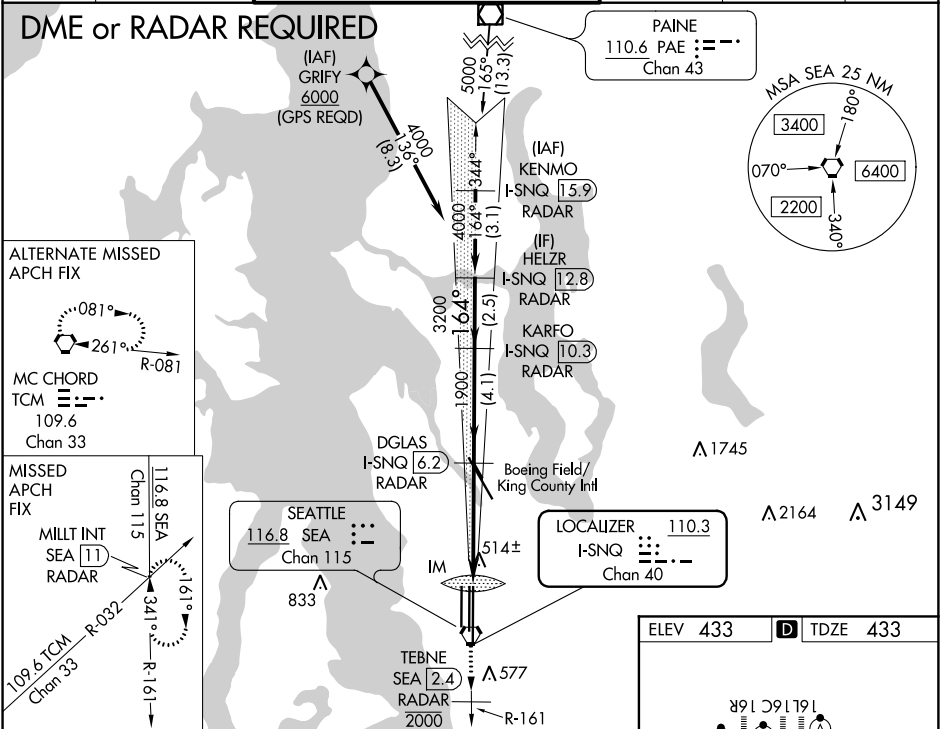
ILS RWY 16L (SA CAT I)

SEATTLE-TACOMA INTL (SEA)

Simultaneous approach authorized with Rwy 16R. DME or RADAR required. Requires specific OPSPEC, MSPEC, or LOA approval and use of HUD to DH.

ALSIF-2
 MISSED APPROACH: Climb to 900 on heading 165° then on SEA VORTAC R-161 to cross TEBNE/SEA 2.4 DME/ RADAR at or below 2000 then climb to 5000 on SEA VORTAC R-161 to MILIT INT/SEA 11 DME/RADAR and hold, continue climb-in-hold to 5000.

D-ATIS 118.0	SEATTLE APP CON 133.65 273.45	SEATTLE TOWER 119.9 239.3 (Rwys 16L, 16C, 34C, 34R) 120.95 239.3 (Rwys 16R, 34L)	GND CON 121.7	CLNC DEL 128.0	CPDLC
------------------------	---	--	-------------------------	--------------------------	-------



CATEGORY	A	B	C	D
S-ILS 16L	NA	RA 248/14	150 DA 583	

SA CATEGORY I ILS - SPECIAL AIRCREW & AIRCRAFT CERTIFICATION REQUIRED

NW-1, 03 JAN 2019 to 31 JAN 2019

NW-1, 03 JAN 2019 to 31 JAN 2019