

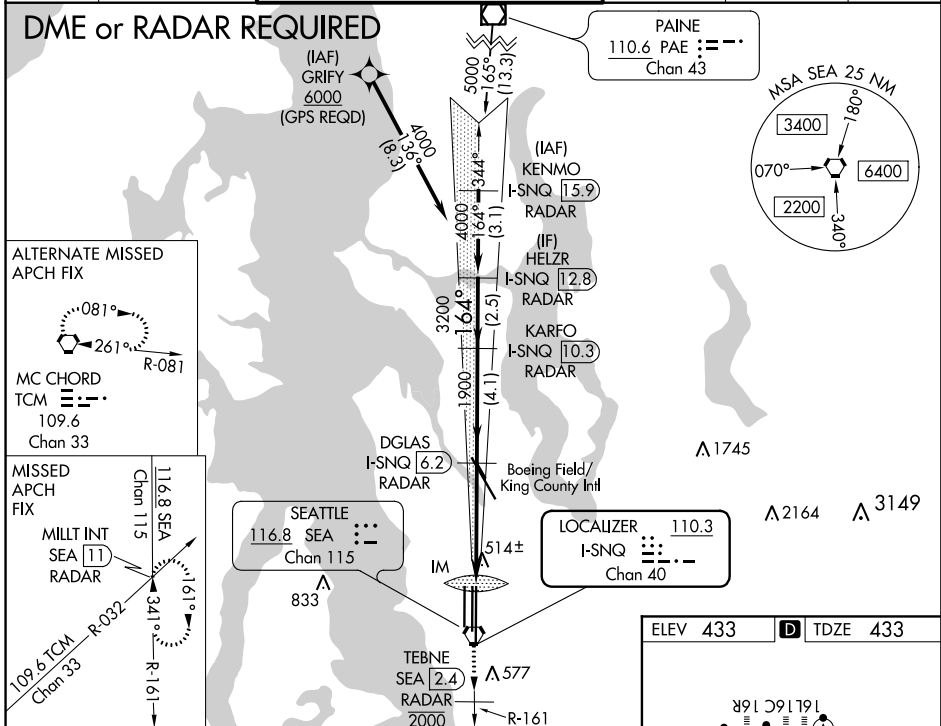
LOC/DME I-SNQ 110.3 Chan 40	APP CRS 164°	Rwy Idg 11900 TDZE 433 Apt Elev 433
---	------------------------	--

ILS RWY 16L (CAT II & III)

SEATTLE-TACOMA INTL (SEA)

<p>∇ Simultaneous approach authorized with Rwy 16R. DME or RADAR required. CAT II: RVR 1000 authorized with specific OPSPEC, MSPEC, or LOA approval and use of autoland or HUD to touchdown.</p>	<p>ALSIF-2</p>	<p>MISSED APPROACH: Climb to 900 on heading 165° then on SEA VORTAC R-161 to cross TEBNE/SEA 2.4 DME/RADAR at or below 2000 then climb to 5000 on SEA VORTAC R-161 to MILIT INT/SEA 11 DME/RADAR and hold, continue climb-in-hold to 5000.</p>	

D-ATIS 118.0	SEATTLE APP CON 133.65 273.45	SEATTLE TOWER 119.9 239.3 (Rwys 16L, 16C, 34C, 34R) 120.95 239.3 (Rwys 16R, 34L)	GND CON 121.7	CLNC DEL 128.0	CPDLC
------------------------	---	--	-------------------------	--------------------------	-------



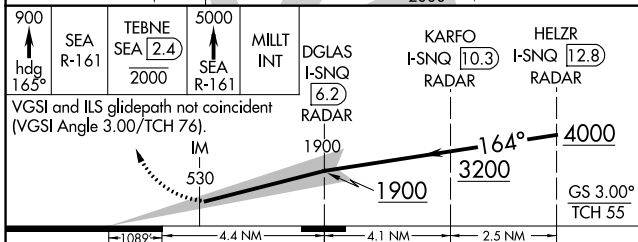
ALTERNATE MISSED APCH FIX

MC CHORD TCM
109.6
Chan 33

MISSED APCH FIX

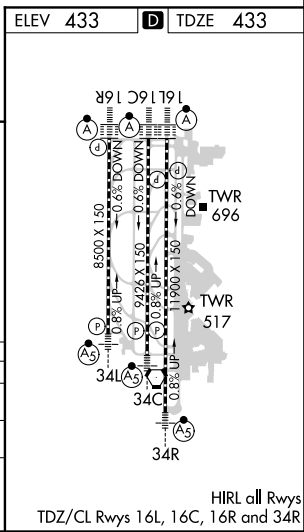
MILIT INT SEA
Chan 115

109.6 TCM
Chan 33



CATEGORY	A	B	C	D
S-ILS 16L	NA	CAT II RA 176/12 100 DA 533		
S-ILS 16L	NA	CAT III RVR 03		

CATEGORY II & III ILS - SPECIAL AIRCREW & AIRCRAFT CERTIFICATION REQUIRED



NW-1, 03 JAN 2019 to 31 JAN 2019

NW-1, 03 JAN 2019 to 31 JAN 2019

HIRL all Rwys
TDZ/CL Rwys 16L, 16C, 16R and 34R