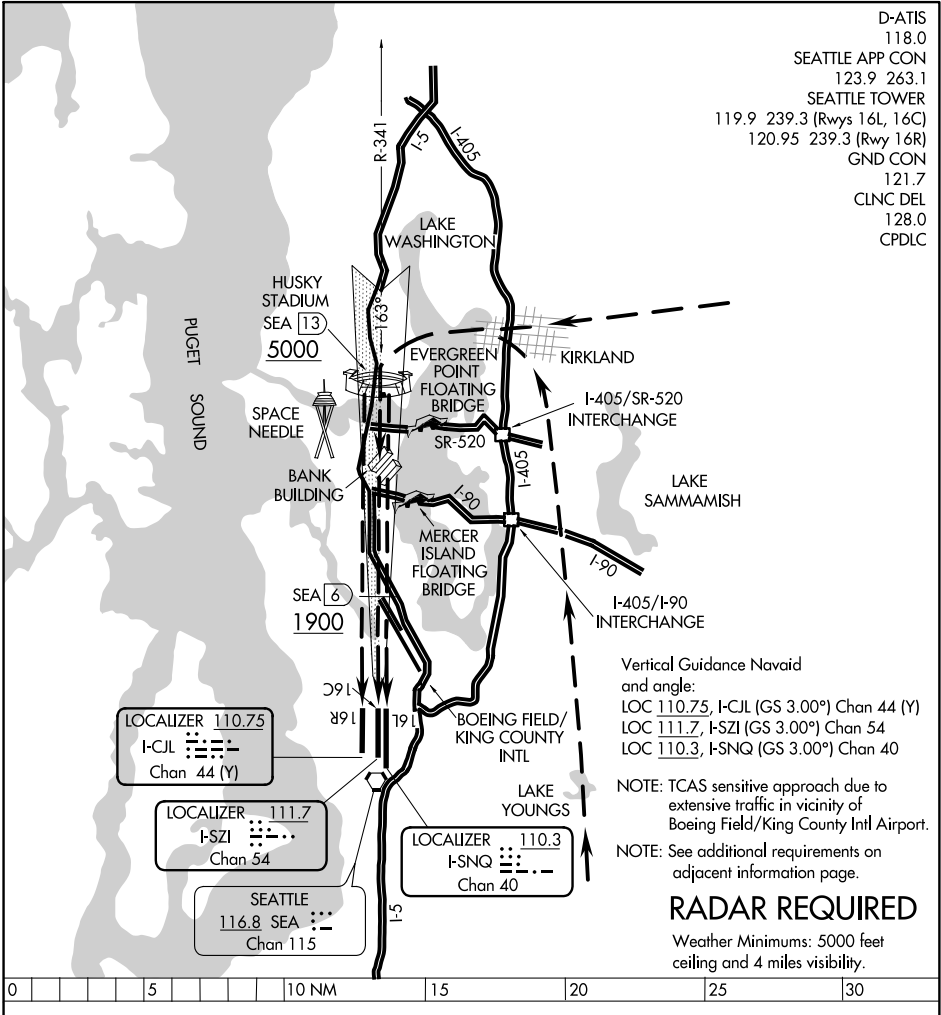


D-ATIS 118.0  
 SEATTLE APP CON 123.9 263.1  
 SEATTLE TOWER 119.9 239.3 (Rwys 16L, 16C)  
 120.95 239.3 (Rwy 16R)  
 GND CON 121.7  
 CLNC DEL 128.0  
 CPDLC



Vertical Guidance Navaid and angle:  
 LOC 110.75, I-CJL (GS 3.00°) Chan 44 (Y)  
 LOC 111.7, I-SZI (GS 3.00°) Chan 54  
 LOC 110.3, I-SNQ (GS 3.00°) Chan 40

NOTE: TCAS sensitive approach due to extensive traffic in vicinity of Boeing Field/King County Intl Airport.  
 NOTE: See additional requirements on adjacent information page.

**RADAR REQUIRED**

Weather Minimums: 5000 feet ceiling and 4 miles visibility.

HUSKY VISUAL APPROACH RWY 16R/C/L

When the ceiling is at least 5000' and visibility is at least 4 miles, aircraft may be vectored over Kirkland or Lake Youngs for a Husky Visual Runway 16R/C/L Approach. When cleared for a Husky Visual Approach; proceed inbound visually over Husky Stadium (via route depicted); intercept the Runway 16R/C/L localizer/SEA R-341 at 13 DME and complete a straight in visual approach to the airport.

NW-1, 03 JAN 2019 to 31 JAN 2019

NW-1, 03 JAN 2019 to 31 JAN 2019