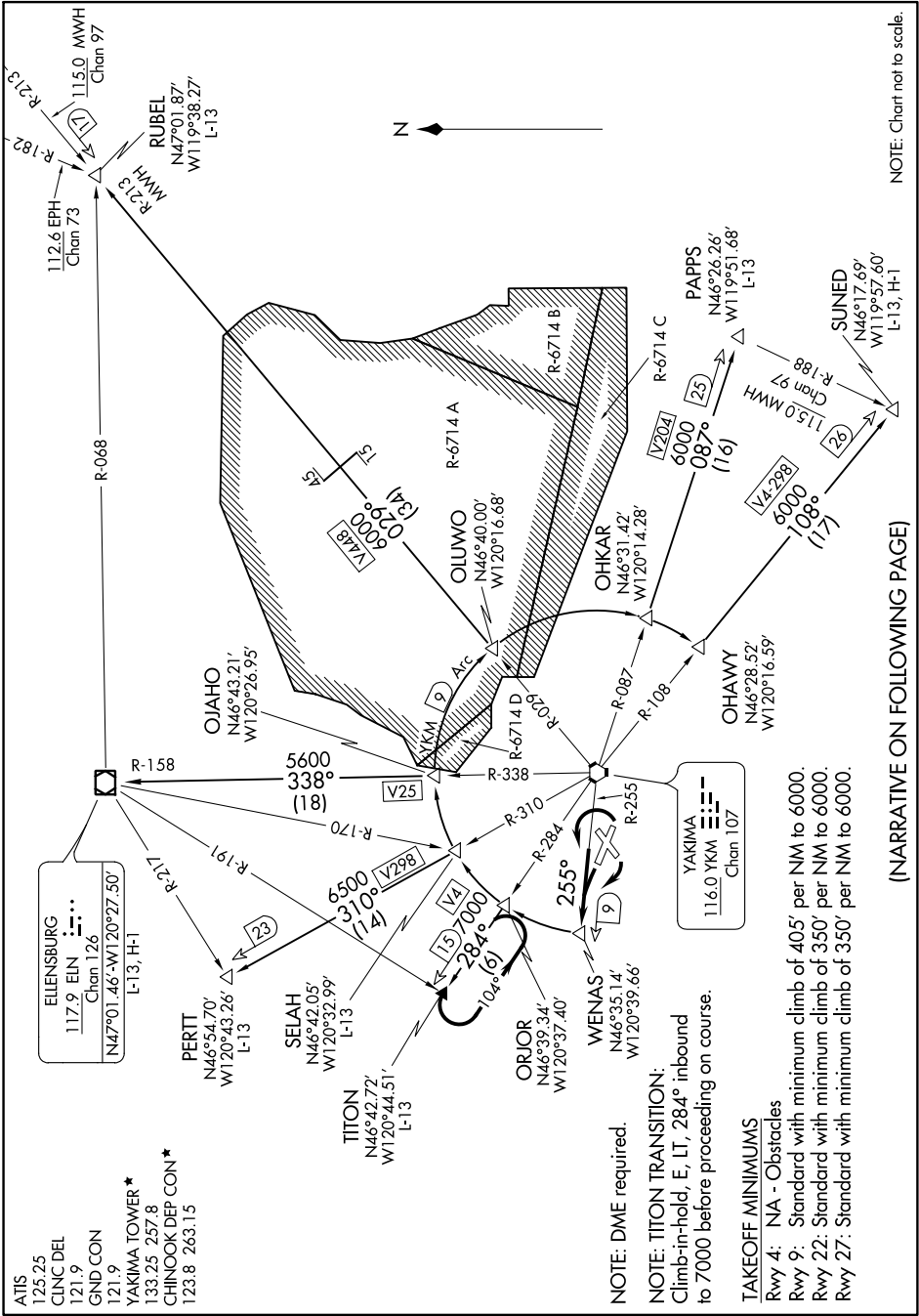


WENAS SEVEN DEPARTURE

NW-1, 03 JAN 2019 to 31 JAN 2019



NOTE: Chart not to scale.

(NARRATIVE ON FOLLOWING PAGE)

NW-1, 03 JAN 2019 to 31 JAN 2019

WENAS SEVEN DEPARTURE

TAKEOFF MINIMUMS
 Rwy 4: NA - Obstacles
 Rwy 9: Standard with minimum climb of 405' per NM to 6000.
 Rwy 22: Standard with minimum climb of 350' per NM to 6000.
 Rwy 27: Standard with minimum climb of 350' per NM to 6000.

NOTE: DME required.
NOTE: TITON TRANSITION:
 Climb-in-hold, E, I, 284° inbound
 to 7000 before proceeding on course.