

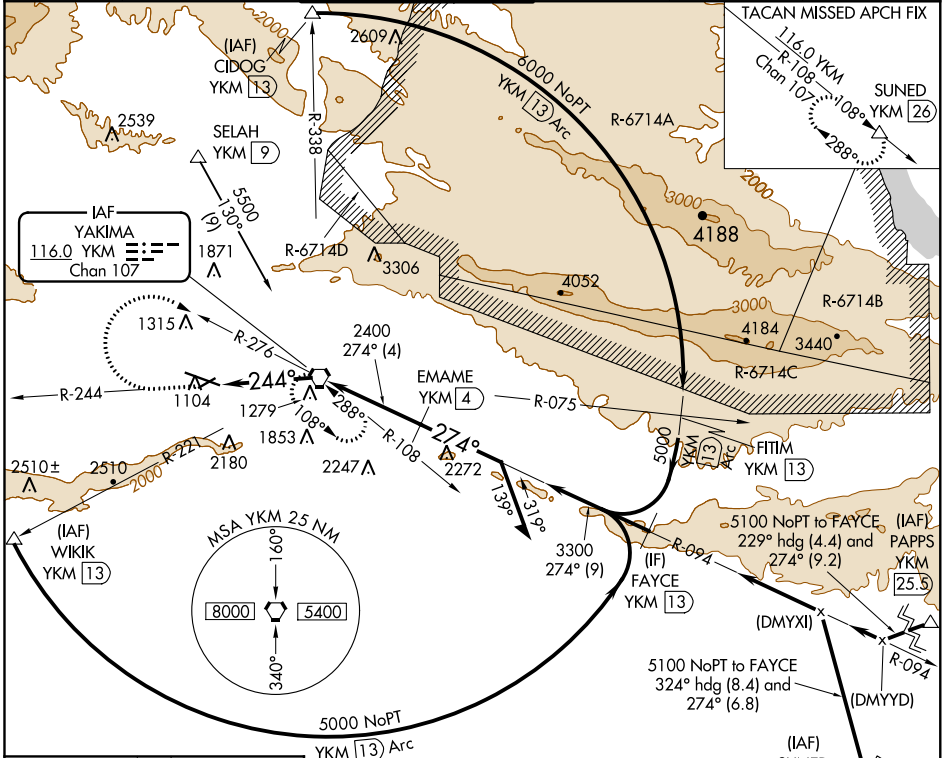
VORTAC YKM 116.0 Chan 107	APP CRS 244°	Rwy Idg TDZE Apt Elev	7604 1068 1099
--	------------------------	-----------------------------	---

VOR/DME or TACAN RWY 27

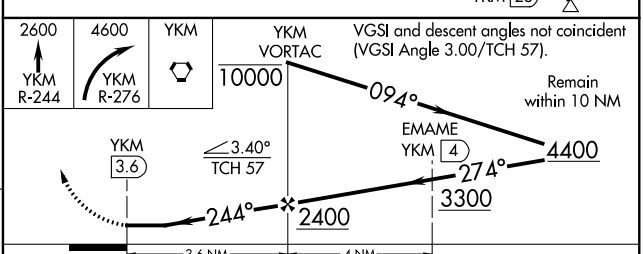
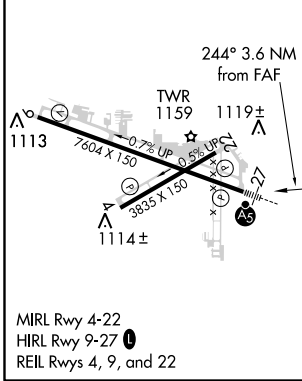
YAKIMA AIR TERMINAL/MCALLISTER FIELD (YKM)

▼ ▲	Inoperative table does not apply. Circling NA south of Rwy 9-27. When local altimeter setting not received, procedure NA.	MALSRL 	MISSED APPROACH: Climb to 2600 via YKM VORTAC R-244, then climbing right turn to 4600 via YKM VORTAC R-276 to YKM VORTAC and hold, continue climb-in-hold to 4600 (TACAN aircraft, continue climb to 5000 via YKM VORTAC R-108 to SUNED/YKM 26 DME and hold west, right turns, 108° inbound).
----------------------	---	------------	---

ATIS 125.25	CHINOOK APP CON * 123.8 263.15	YAKIMA TOWER * 133.25 (CTAF) 0 257.8	GND CON 121.9	CLNC DEL 121.9	UNICOM 122.95
-----------------------	--	--	-------------------------	--------------------------	-------------------------



ELEV 1099	D	TDZE 1068
-----------	----------	-----------



CATEGORY	A	B	C	D
S-27	2100/60 1032 (1100-1¼)	2100-1½ 1032 (1100-1½)	2100-3	1032 (1100-3)
CIRCLING	2100-1¼ 1001 (1100-1¼)	2100-1½ 1001 (1100-1½)	2100-3	1001 (1100-3)

NW-1, 03 JAN 2019 to 31 JAN 2019

NW-1, 03 JAN 2019 to 31 JAN 2019