

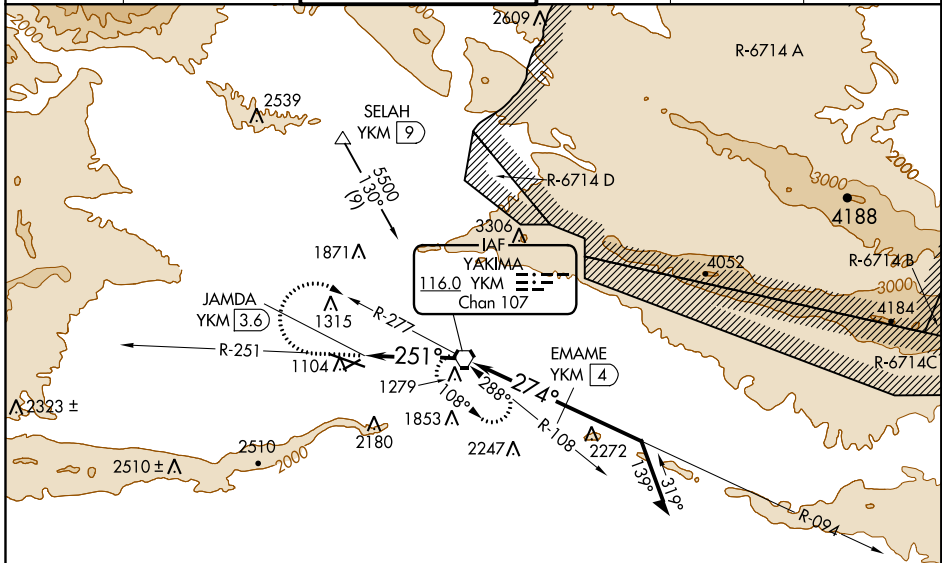
VORTAC YKM 116.0 Chan 107	APP CRS 251°	Rwy Idg TDZE Apt Elev N/A N/A 1099
---	------------------------	--

VOR-A

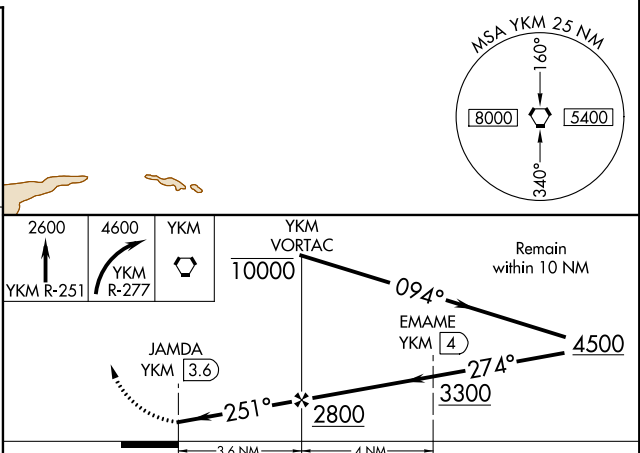
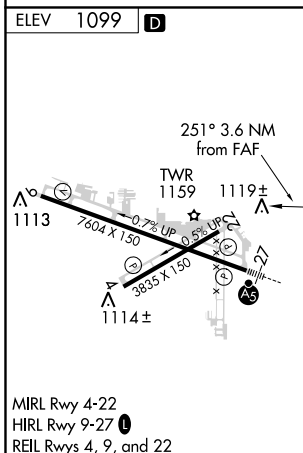
YAKIMA AIR TERMINAL/MCALLISTER FIELD (YKM)

<p>▼ DME required. ▲ Circling not authorized south of Rwy 9-27. When local altimeter setting not received, procedure NA.</p>	<p>MISSED APPROACH: Climb to 2600 via YKM VORTAC R-251 then climbing right turn to 4600 via YKM VORTAC R-277 to YKM VORTAC and hold, continue climb-in-hold to 4600.</p>
--	--

ATIS 125.25	CHINOOK APP CON* 123.8 263.15	YAKIMA TOWER* 133.25 (CTAF) 0 257.8	GND CON 121.9	CLNC DEL 121.9	UNICOM 122.95
-----------------------	---	---	-------------------------	--------------------------	-------------------------



NW-1, 03 JAN 2019 to 31 JAN 2019



FAF to MAP 3.6 NM					
Knots	60	90	120	150	180
Min:Sec	3:36	2:24	1:48	1:26	1:12
CATEGORY	A	B	C	D	
CIRCLING	1840-1 741 (800-1)	1840-1¼ 741 (800-1¼)	1840-2¼ 741 (800-2¼)	1840-2½ 741 (800-2½)	

NW-1, 03 JAN 2019 to 31 JAN 2019