

# RNAV (RNP) Y RWY 27

YAKIMA AIR TERMINAL/MCALLISTER FIELD (YKM)

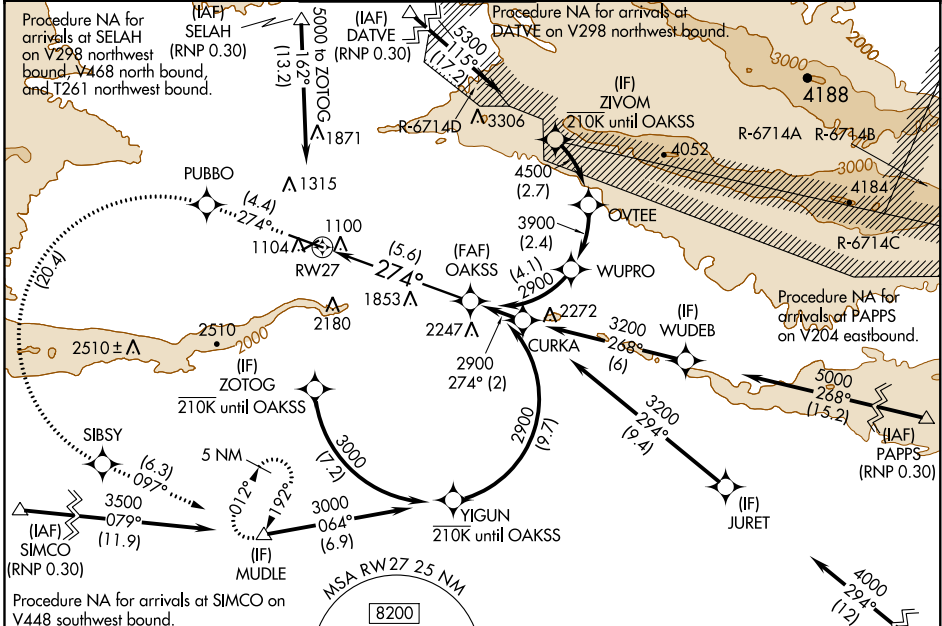
APP CRS	Rwy Idg	<b>7604</b>
<b>274°</b>	TDZE	<b>1068</b>
	Apt Elev	<b>1099</b>

**⚠** For uncompensated Baro-VNAV systems, procedure NA below -17°C (2°F) or above 54°C (130°F).  
**RF** required. **GPS** required. **DATVE** transition NA when R-6714 A, C, D active.



**MISSED APPROACH:** Climb to 5100 on track 274° to PUBBO left turn to SIBSY and on track 097° to MUDLE and hold.  
 \*Missed approach requires minimum climb of 425 feet per NM to 3400.

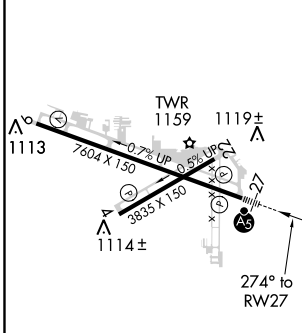
ATIS	CHINOOK APP CON*	YAKIMA TOWER*	GND CON	CLNC DEL	UNICOM
<b>125.25</b>	<b>123.8 263.15</b>	<b>133.25 (CTAF) 257.8</b>	<b>121.9</b>	<b>121.9</b>	<b>122.95</b>



NW-1, 03 JAN 2019 to 31 JAN 2019

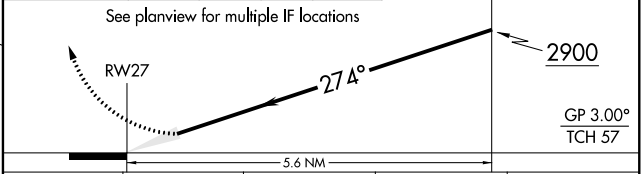
NW-1, 03 JAN 2019 to 31 JAN 2019

ELEV 1099	<b>D</b>	TDZE 1068
-----------	----------	-----------



MIRL Rwy 4-22  
 HIRL Rwy 9-27  
 REL Rwys 4, 9, and 22

5100	PUBBO	SIBSY	MUDLE
tr 274°	⬠	⬠	tr 097°



CATEGORY	A	B	C	D
RNP 0.30 DA*		1418/30	350 (400-5%)	
RNP 0.30 DA		1845-2¼	777 (800-2¼)	

## AUTHORIZATION REQUIRED