

APP CRS	Rwy Idg	<b>7604</b>
<b>094°</b>	TDZE	<b>1099</b>
	Apt Elev	<b>1099</b>

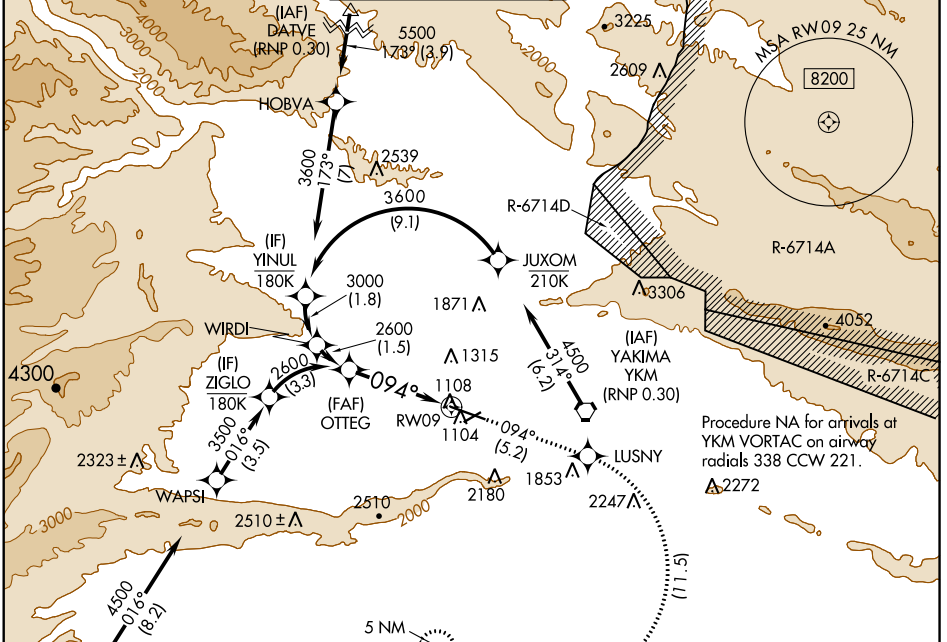
# RNAV (RNP) RWY 9

YAKIMA AIR TERMINAL/MCALLISTER FIELD (YKM)

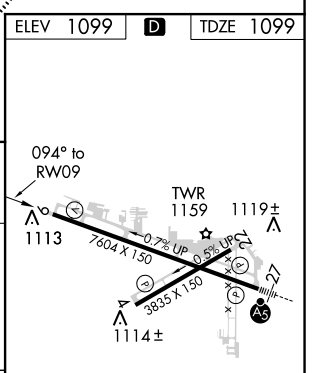
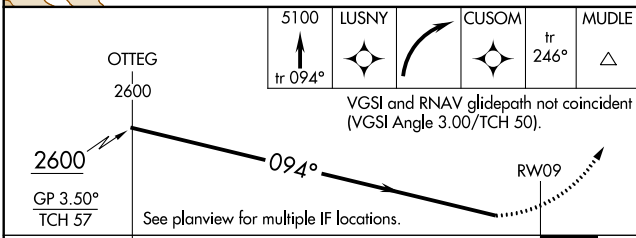
**RF required. GPS required. For uncompensated Baro-VNAV systems, procedure NA below -17°C (2°F) or above 45°C (113°F).**  
**\* Missed approach requires a minimum climb of 425 feet per NM to 3000.**

**MISSED APPROACH:** Climb to 5100 on track 094° to LUSNY right turn to CUSOM and on track 246° to MUDLE and hold.

ATIS <b>125.25</b>	CHINOOK APP CON * <b>123.8 263.15</b>	YAKIMA TOWER * <b>133.25 (CTAF) 257.8</b>	GND CON <b>121.9</b>	CLNC DEL <b>121.9</b>	UNICOM <b>122.95</b>
-----------------------	--	--	-------------------------	--------------------------	-------------------------



ELEV 1099	TDZE 1099		
OTTEG 2600	LUSNY 5100	CUSOM tr 246°	MUDLE tr 246°



CATEGORY	A	B	C	D
RNP 0.30 DA*	1473-1	374 (400-1)		NA
RNP 0.30 DA	1934-2½	835 (900-2½)		NA

## AUTHORIZATION REQUIRED

MIRL Rwy 4-22  
 HIRL Rwy 9-27  
 REIL Rws 4, 9, and 22

NW-1, 03 JAN 2019 to 31 JAN 2019

NW-1, 03 JAN 2019 to 31 JAN 2019