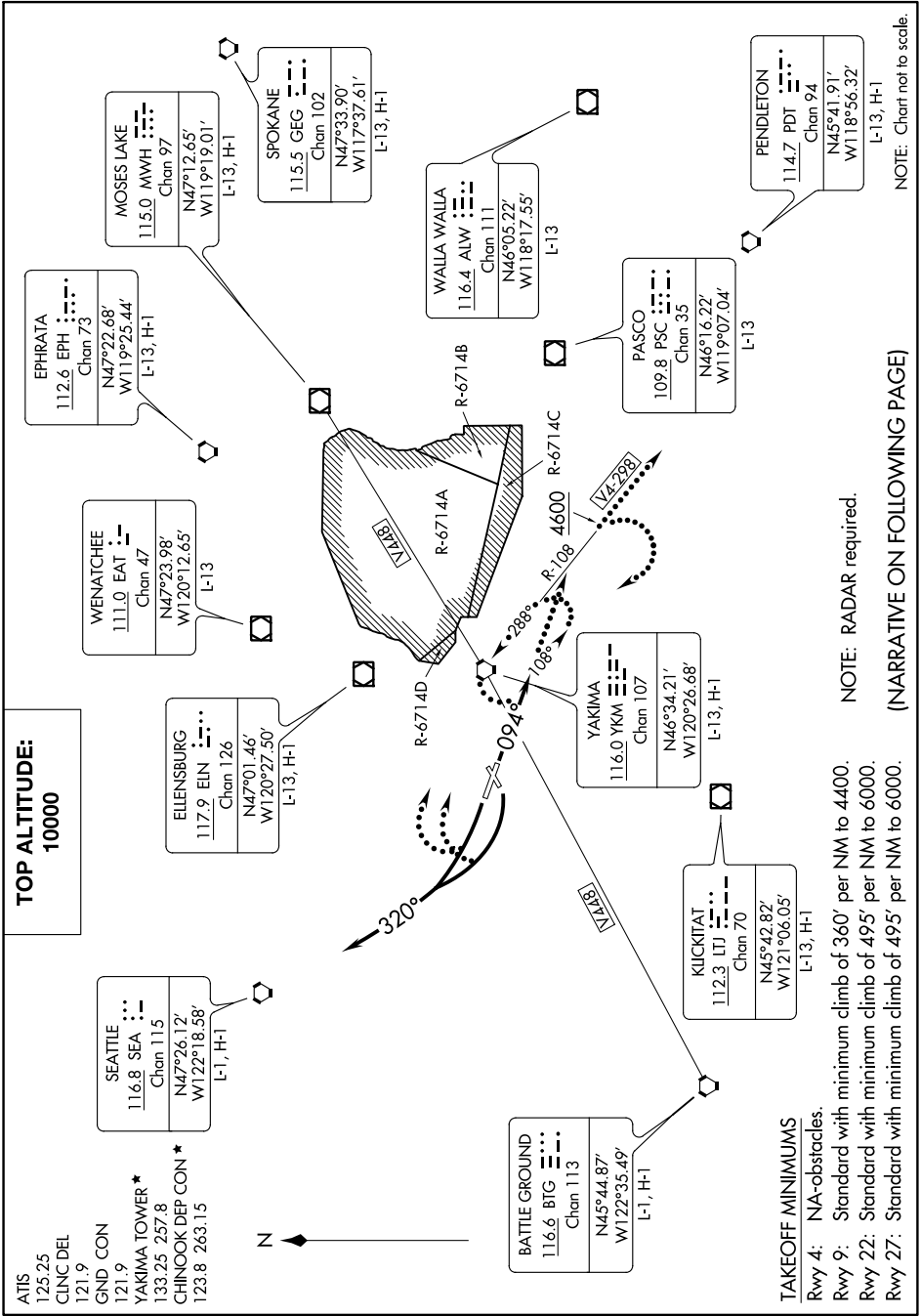


NACHES FOUR DEPARTURE

YAKIMA AIR TERMINAL/MCALLISTER FIELD (YKM)
AL-465 (FAA) YAKIMA, WASHINGTON

NW-1, 03 JAN 2019 to 31 JAN 2019



**TOP ALTITUDE:
10000**

ATIS
125.25
CLINC DEL
121.9
GND CON
121.9
YAKIMA TOWER *
133.25 257.8
CHINOOK DEP CON *
123.8 263.15

TAKEOFF MINIMUMS
Rwy 4: NA-obstacles.
Rwy 9: Standard with minimum climb of 360' per NM to 4400.
Rwy 22: Standard with minimum climb of 495' per NM to 6000.
Rwy 27: Standard with minimum climb of 495' per NM to 6000.

NACHES FOUR DEPARTURE

10NOV16

YAKIMA, WASHINGTON

YAKIMA AIR TERMINAL/MCALLISTER FIELD (YKM)

NOTE: RADAR required.

(NARRATIVE ON FOLLOWING PAGE)

NW-1, 03 JAN 2019 to 31 JAN 2019

NOTE: Chart not to scale.