

LOC I-YKM 110.1	APP CRS 094°	Rwy Idg TDZE Apt Elev N/A 1099
---------------------------	------------------------	---

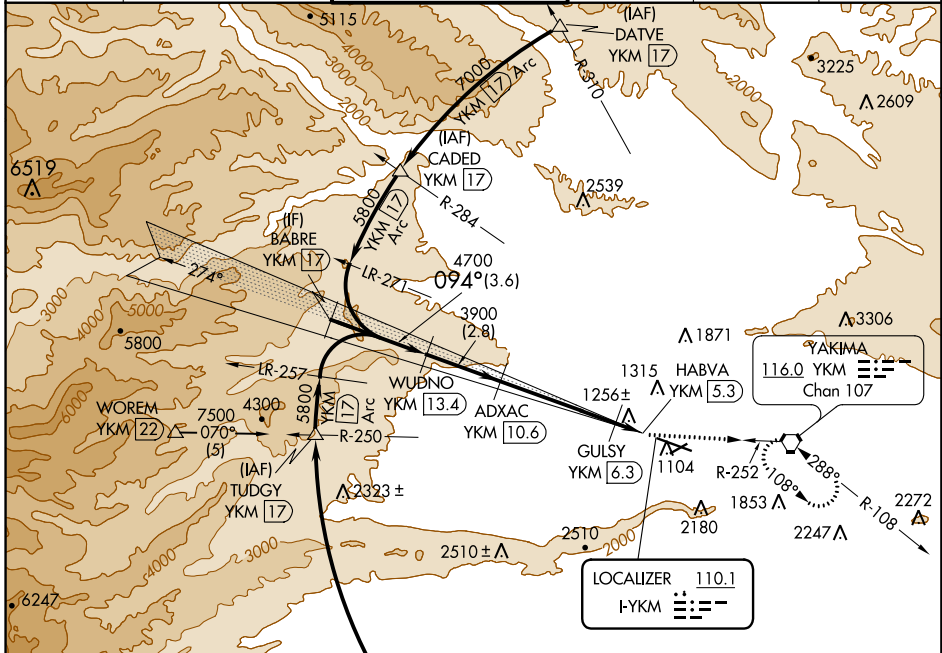
LOC/DME BC-B

YAKIMA AIR TERMINAL/MCALLISTER FIELD (YKM)

Simultaneous reception of I-YKM and YKM DME required. Circling NA south of Rwy 9-27. When local altimeter setting not received, procedure NA.

MISSED APPROACH: Climb to 4600 via YKM VORTAC R-252 to YKM VORTAC and hold, continue climb-in-hold to 4600.

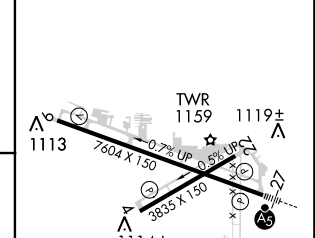
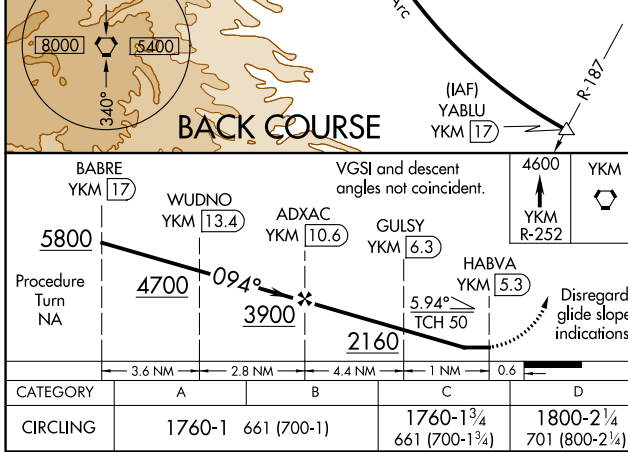
ATIS 125.25	CHINOOK APP CON ★ 123.8 263.15	YAKIMA TOWER ★ 133.25 (CTAF) 0 257.8	GND CON 121.9	CLNC DEL 121.9	UNICOM 122.95
-----------------------	--	--	-------------------------	--------------------------	-------------------------



NW-1, 03 JAN 2019 to 31 JAN 2019

NW-1, 03 JAN 2019 to 31 JAN 2019

LOCALIZER I-YKM	ELEV 1099
--------------------	-----------



CATEGORY	A	B	C	D
CIRCLING	1760-1	661 (700-1)	1760-1¾ 661 (700-1¾)	1800-2¼ 701 (800-2¼)

MIRL Rwy 4-22
HIRL Rwy 9-27
REIL Rws 4, 9, and 22

LOC/DME BC-B