

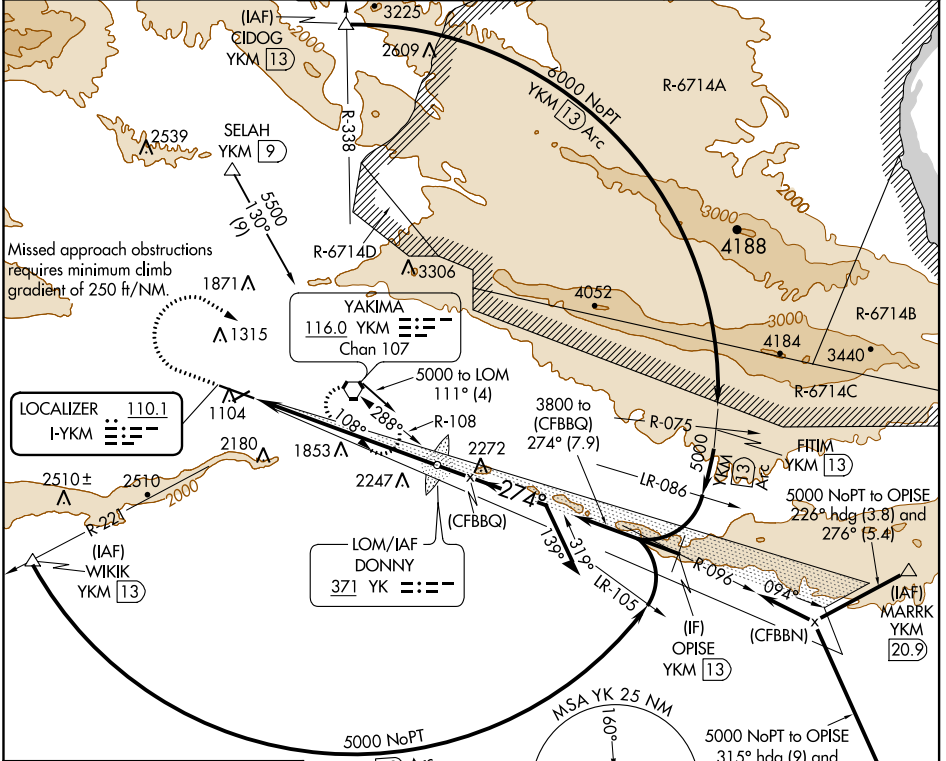
LOC I-YKM <b>110.1</b>	APP CRS <b>274°</b>	Rwy Idg TDZE Apt Elev	<b>7604</b> <b>1068</b> <b>1099</b>
---------------------------	------------------------	-----------------------------	---

# ILS Z RWY 27

YAKIMA AIR TERMINAL/MCALLISTER FIELD (YKM)

<b>ADP or DME required.</b> When local altimeter setting not received, procedure NA. <b>**RVR 1800 authorized with use of FD or AP or HUD to DA.</b>	<b>MALSR</b> 	<b>MISSED APPROACH:</b> Climb to 2600 then climbing right turn to 4600 direct YKM VORTAC and hold, continue climb-in-hold to 4600.

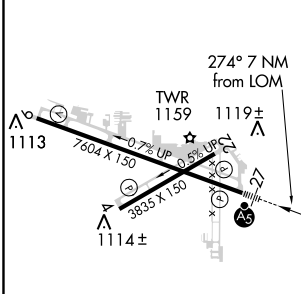
ATIS <b>125.25</b>	CHINOOK APP CON* <b>123.8 263.15</b>	<b>YAKIMA TOWER*</b> <b>133.25 (CTAF) 257.8</b>	GND CON <b>121.9</b>	CLNC DEL <b>121.9</b>	UNICOM <b>122.95</b>
-----------------------	---	--	-------------------------	--------------------------	-------------------------



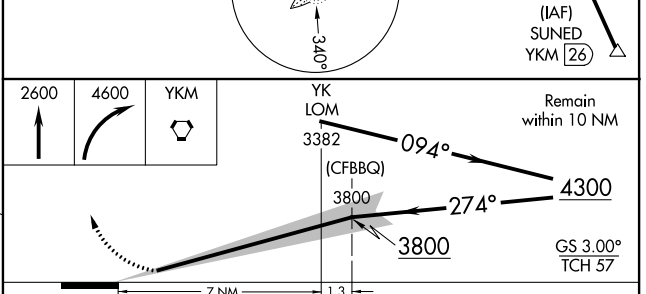
NW-1, 03 JAN 2019 to 31 JAN 2019

NW-1, 03 JAN 2019 to 31 JAN 2019

ELEV 1099	<b>D</b>	TDZE 1068
-----------	----------	-----------



MIRL Rwy 4-22  
 HIRL Rwy 9-27  
 REIL Rwy 4, 9, and 22



CATEGORY	A	B	C	D
S-ILS 27		**1268/24	200 (200-1/2)	

# ILS Z RWY 27