

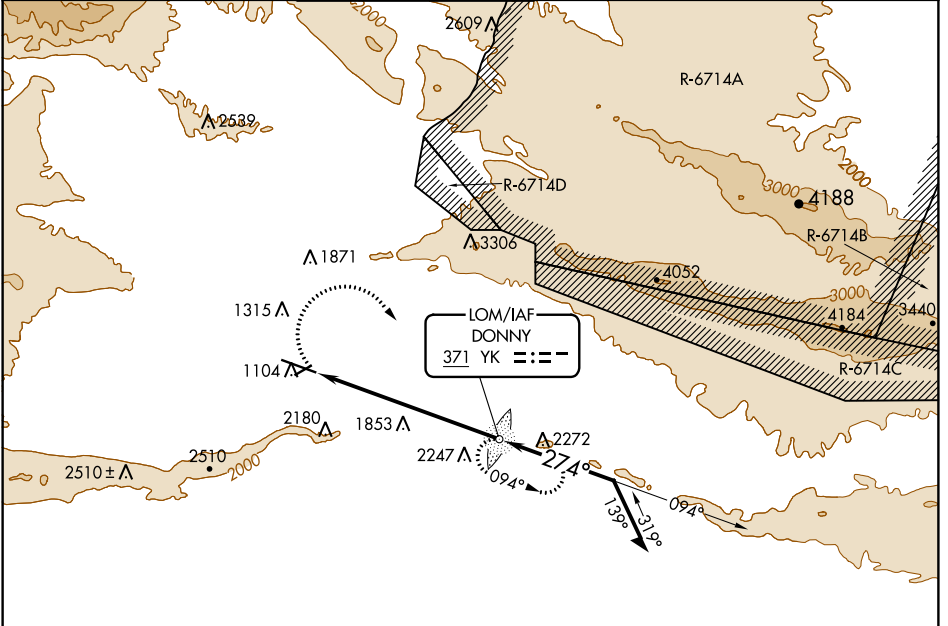
LOM YK <b>371</b>	APP CRS <b>274°</b>	Rwy Idg <b>7604</b>	TDZE <b>1068</b>
		Apt Elev <b>1099</b>	

# COPTER NDB RWY 27

YAKIMA AIR TERMINAL/MCALLISTER FIELD (YKM)

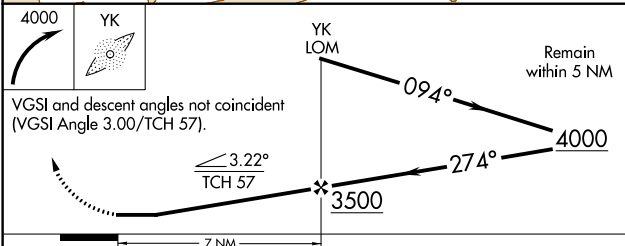
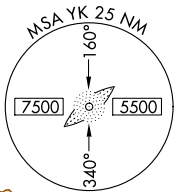
<b>NA</b> For inoperative MALS, increase H-27 visibility to RVR 5500.	MALS 	MISSED APPROACH: Climbing right turn to 4000 direct DONNY LOM and hold.
--	----------	---

ATIS <b>125.25</b>	CHINOOK APP CON* <b>123.8 263.15</b>	YAKIMA TOWER* <b>133.25 (CTAF) 257.8</b>	GND CON <b>121.9</b>	CLNC DEL <b>121.9</b>	UNICOM <b>122.95</b>
-----------------------	---	---	-------------------------	--------------------------	-------------------------



NW-1, 03 JAN 2019 to 31 JAN 2019

NW-1, 03 JAN 2019 to 31 JAN 2019



ELEV 1099	<b>D</b>	TDZE 1068
-----------	----------	-----------

MIRL Rwy 4-22  
HIRL Rwy 9-27  
REIL Rws 4, 9, and 22

FAF to MAP 7 NM					
Knots	45	60	75	90	105
Min:Sec	9:20	7:00	5:36	4:40	4:00

CATEGORY	COPTER				
H-27	2560/30 1492 (1500-5%)				