

VORTAC GEG 115.5 Chan 102	APP CRS 028°	Rwy Idg 11002 TDZE 2385 Apt Elev 2385
---	------------------------	--

VOR RWY 3

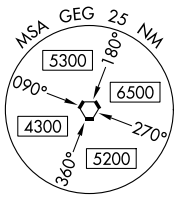
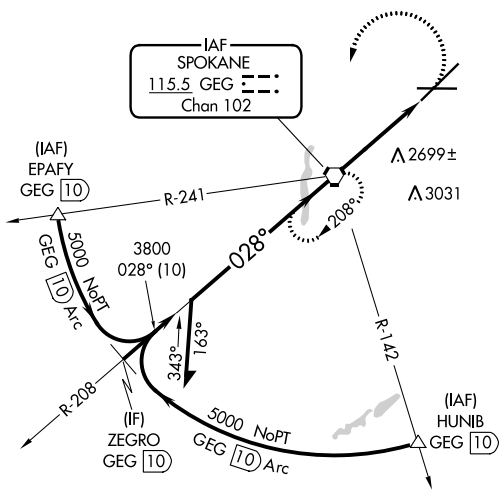
SPOKANE INTL (GEG)

⚠ Circling NA for Cat E southeast of Rwy 3-21.
For inop ALS, increase S-3 Cat C/D/E visibility to 1 1/8 SM.



MISSED APPROACH: Climbing left turn to 4200 direct GEG VORTAC and hold, continue climb-in-hold to 4200.

ATIS 124.325 254.375	SPOKANE APP CON 123.75 282.25 (205°-025°) 133.35 263.0 (026°-204°)	SPOKANE TOWER 118.3 278.3	GND CON 121.9 348.6	CLNC DEL 127.55
--------------------------------	--	-------------------------------------	-------------------------------	---------------------------

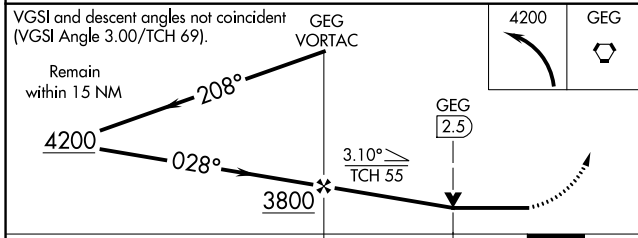
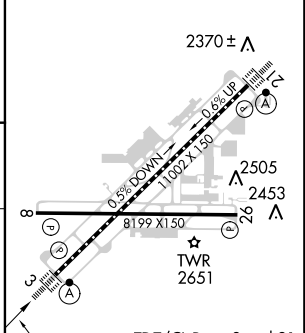


NW-1, 03 JAN 2019 to 31 JAN 2019

NW-1, 03 JAN 2019 to 31 JAN 2019



ELEV 2385	D TDZE 2385
-----------	--------------------



CATEGORY	A	B	C	D	E
S-3	2960/24	575 (600-1/2)	2960-1 1/4	575 (600-1 1/4)	
C CIRCLING	2960-1 575 (600-1)	2980-1 595 (600-1)	3300-2 3/4 915 (1000-2 3/4)	3400-3	1015 (1100-3)

FAF to MAP 4.1 NM					
Knots	60	90	120	150	180
Min:Sec	4:06	2:44	2:03	1:38	1:22