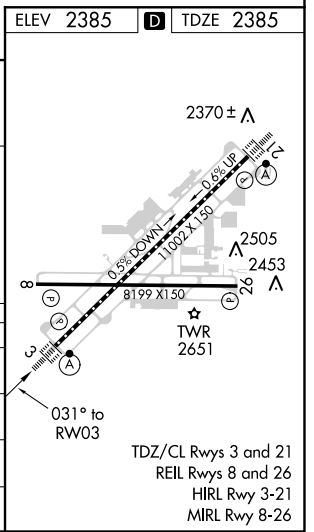
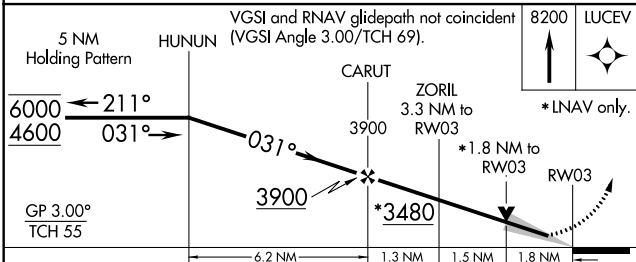
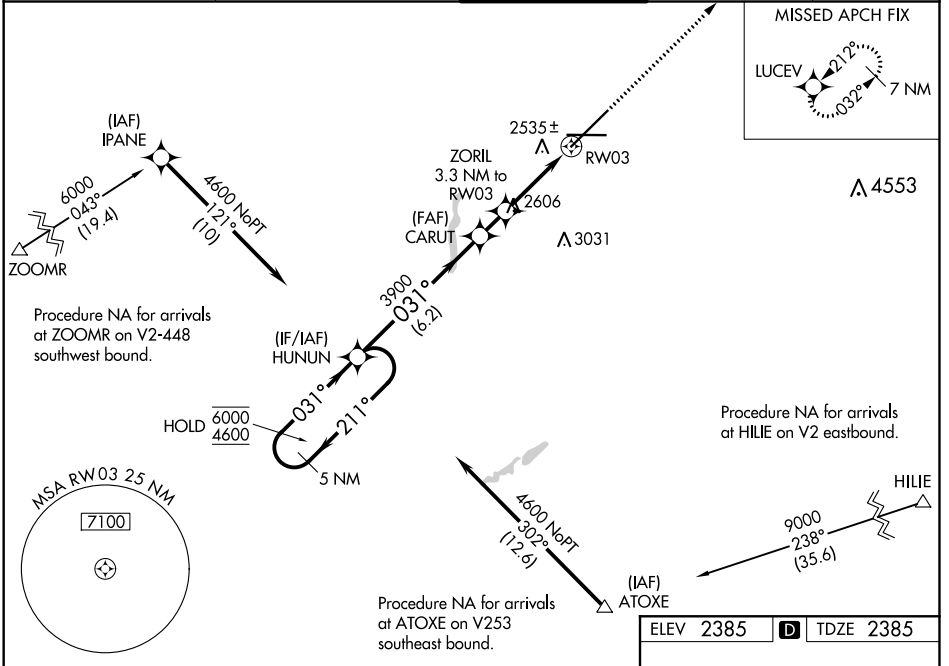


WAAS CH 81920 W03A	APP CRS 031°	Rwy Idg TDZE Apt Elev	11002 2385 2385
--	------------------------	-----------------------------	--

RNAV (GPS) Y RWY 3

SPOKANE INTL (GEG)

RNP APCH.		ALSF-2	MISSED APPROACH: Climb to 8200 direct LUCEV and hold, continue climb-in-hold to 8200.	
ATIS 124.325 254.375	SPOKANE APP CON 123.75 282.25 (205°-025°) 133.35 263.0 (026°-204°)	SPOKANE TOWER 118.3 278.3	GND CON 121.9 348.6	CLNC DEL 127.55



CATEGORY	A	B	C	D
LPV DA	2585/18		200 (200-½)	
LNAV/VNAV DA	2962-1½		577 (600-1½)	
LNAV MDA	3020/24	635 (700-½)	3020/60 635 (700-1¼)	3020-1½ 635 (700-1½)
C CIRCLING	3020-1	635 (700-1)	3300-2¾ 915 (1000-2¾)	3400-3 1015 (1100-3)

NW-1, 03 JAN 2019 to 31 JAN 2019

NW-1, 03 JAN 2019 to 31 JAN 2019