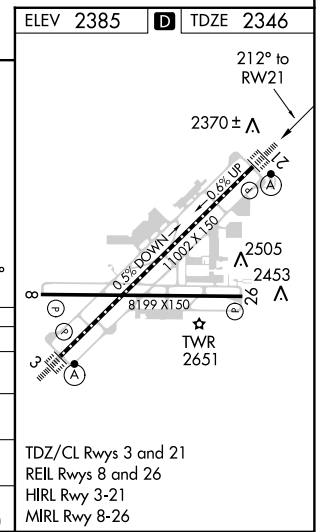
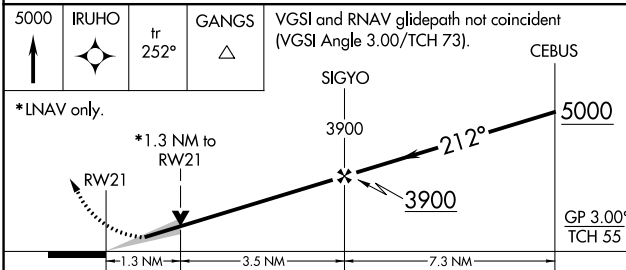
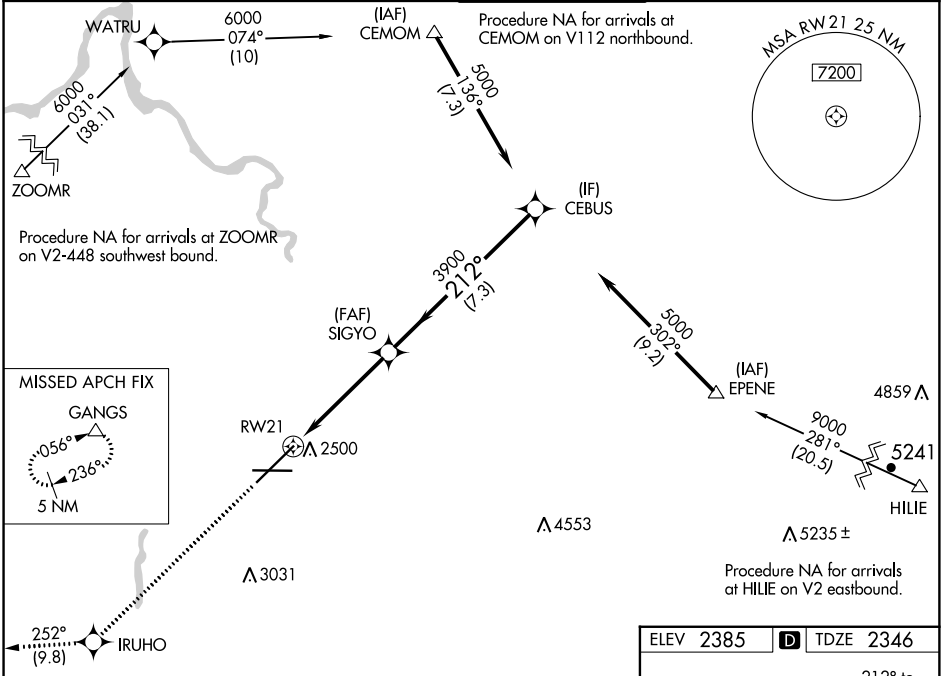


WAAS CH 82619 W21A	APP CRS 212°	Rwy Idg TDZE 2346 Apt Elev 2385
--	------------------------	---

RNAV (GPS) Y RWY 21

SPOKANE INTL (GEG)

RNP APCH.		ALSIF-2	MISSED APPROACH: Climb to 5000 direct IRUHO and on track 252° to GANGS and hold.	
⚠ For uncompensated Baro-VNAV systems, LNAV/VNAV NA below -18°C or above 53°C.				
ATIS 124.325 254.375		SPOKANE APP CON 123.75 282.25 (205°-025°) 133.35 263.0 (026°-204°)		SPOKANE TOWER 118.3 278.3
		GND CON 121.9 348.6		CLNC DEL 127.55



CATEGORY	A	B	C	D
LPV DA		2546/18	200 (200-½)	
LNAV/VNAV DA		2720/45	374 (400-¾)	
LNAV MDA	2800/24	454 (500-½)	2800/45	454 (500-¾)
CIRCLING	2960-1 575 (600-1)	2980-1 595 (600-1)	3300-2¾ 915 (1000-2¾)	3400-3 1015 (1100-3)

NW-1, 03 JAN 2019 to 31 JAN 2019

NW-1, 03 JAN 2019 to 31 JAN 2019