

# RNAV (RNP) Z RWY 21

SPOKANE INTL (G/E/G)

APP CRS	Rwy Idg	<b>11002</b>
<b>212°</b>	TDZE	<b>2346</b>
	Apt Elev	<b>2385</b>

**RNP AR APCH.**

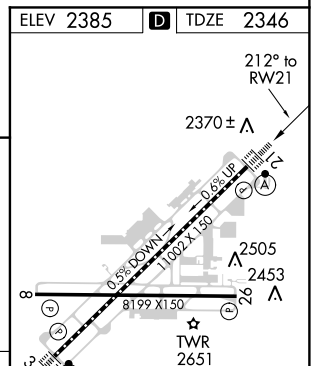
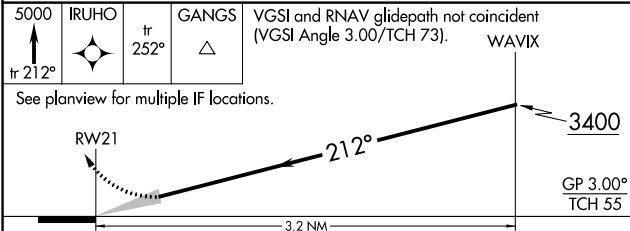
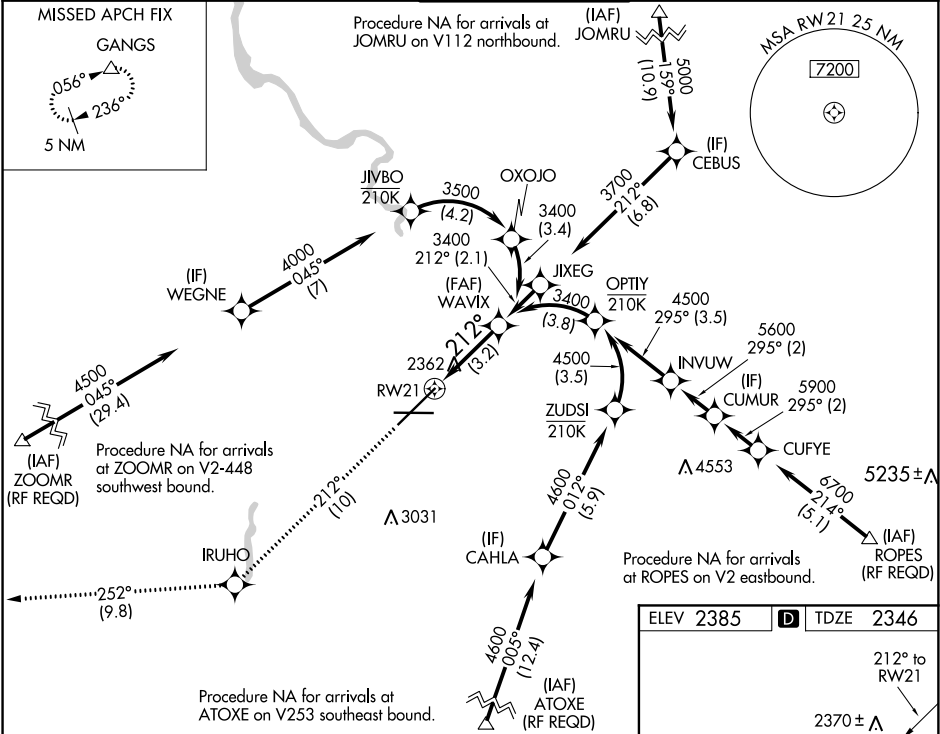
▼ For uncompensated Baro-VNAV systems, procedure NA below -19°C or above 43°C. For inop ALS increase RNP 0.11 visibility all Cats to 3/4, RNP 0.15 visibility all Cats to 1 1/8 and RNP 0.30 visibility all Cats to 1 3/8.

**ALSIF-2**

**MISSED APPROACH:** Climb to 5000 on track 212° to IRUHO and on track 252° to GANGS and hold.

\*Missed approach requires minimum climb of 310 feet per NM to 3000.

<b>ATIS</b>	<b>SPOKANE APP CON</b>	<b>SPOKANE TOWER</b>	<b>GND CON</b>	<b>CLNC DEL</b>
<b>124.325 254.375</b>	<b>123.75 282.25 (205°-025°)</b> <b>133.35 263.0 (026°-204°)</b>	<b>118.3 278.3</b>	<b>121.9 348.6</b>	<b>127.55</b>



CATEGORY	A	B	C	D
RNP 0.11 DA*		2596/24	250 (300-1/2)	
RNP 0.15 DA		2699/30	353 (400-5/8)	
RNP 0.30 DA		2752/45	406 (400-7/8)	

TDZ/CL Rwy 3 and 21

REIL Rwy 8 and 26

HIRL Rwy 3-21

MIRL Rwy 8-26

## AUTHORIZATION REQUIRED

NW-1, 03 JAN 2019 to 31 JAN 2019

NW-1, 03 JAN 2019 to 31 JAN 2019