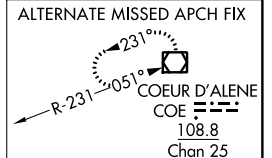
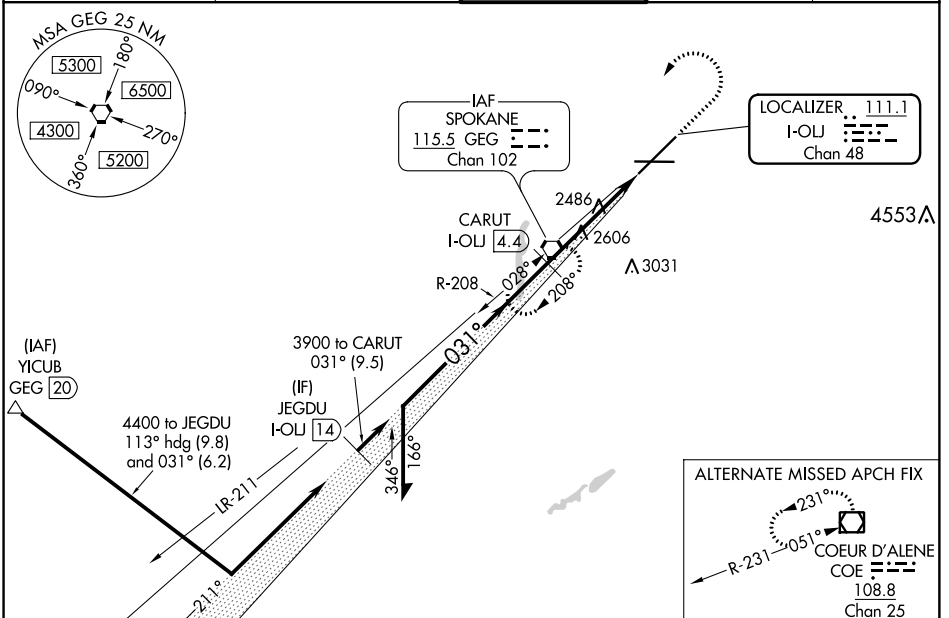


LOC/DME I-OLJ 111.1 Chan 48	APP CRS 031°	Rwy Idg TDZE Apt Elev	11002 2385 2385
--	------------------------	-----------------------------	--

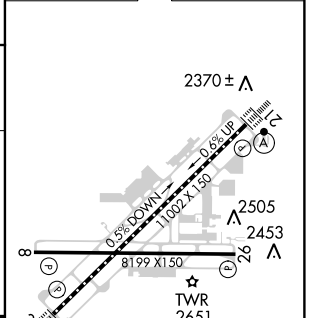
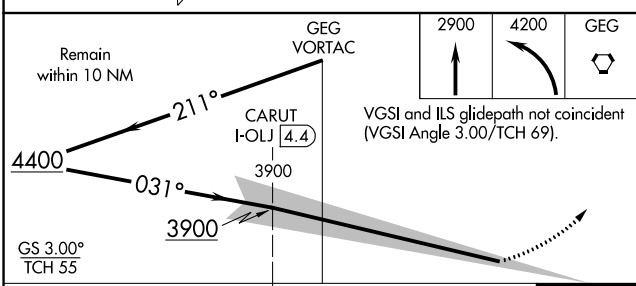
ILS RWY 3 (CAT II & III)

SPOKANE INTL (GEG)

	SPOKANE APP CON		SPOKANE TOWER	GND CON	CLNC DEL
	ATIS 124.325 254.375	123.75 282.25 (205°-025°) 133.35 263.0 (026°-204°)	118.3 278.3	121.9 348.6	127.55



ELEV 2385	TDZE 2385
-----------	-----------



CATEGORY	A	B	C	D
S-ILS 3	CAT II RA 104/12 100 DA 2485			
S-ILS 3	CAT III RVR 03			

CATEGORY II & III ILS - SPECIAL AIRCREW & AIRCRAFT CERTIFICATION REQUIRED

TDZ/CL Rwy 3 and 21
 REL Rwy 8 and 26
 HIRL Rwy 3-21
 MIRL Rwy 8-26

NW-1, 03 JAN 2019 to 31 JAN 2019

NW-1, 03 JAN 2019 to 31 JAN 2019