

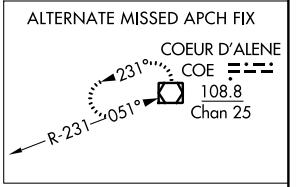
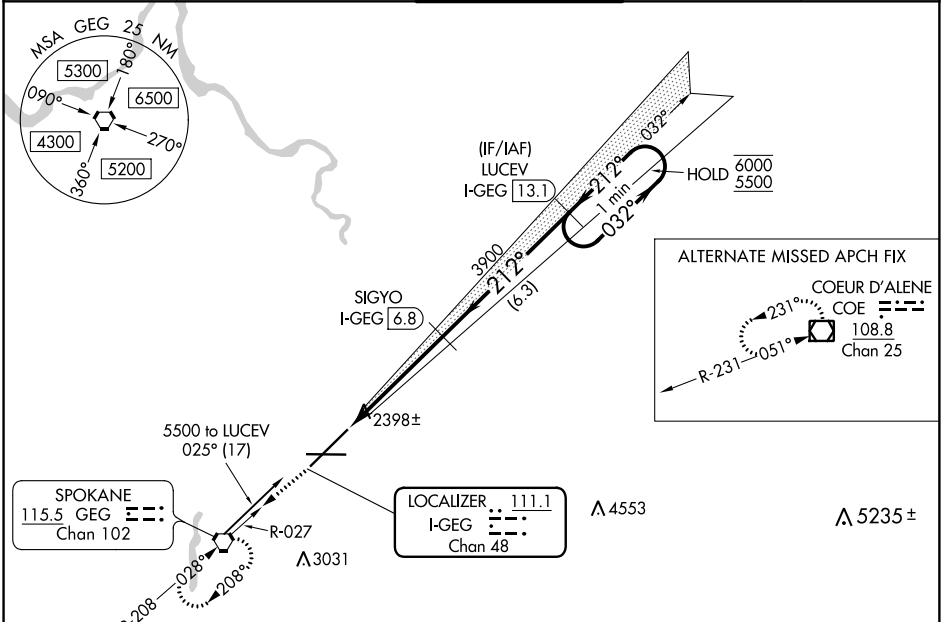
LOC/DME I-GEG 111.1 Chan 48	APP CRS 212°	Rwy Idg 11002 TDZE 2346 Apt Elev 2385
---	------------------------	--

ILS RWY 21 (SA CAT I)

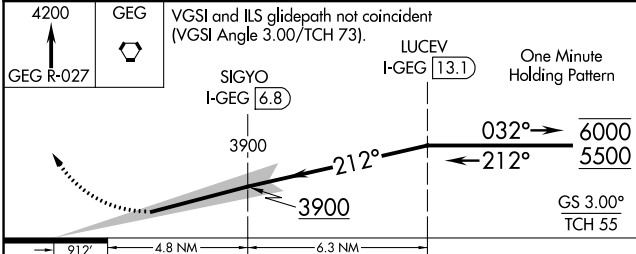
SPOKANE INTL (GEG)

DME required.		ALSIF-2	MISSED APPROACH: Climb to 4200 on GEG VORTAC R-027 to GEG VORTAC and hold.	
Requires specific OPSPEC, MSPEC, or LOA approval and use of HUD to DH.				

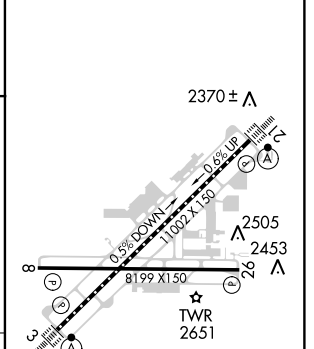
ATIS 124.325 254.375	SPOKANE APP CON 123.75 282.25 (205°-025°) 133.35 263.0 (026°-204°)	SPOKANE TOWER 118.3 278.3	GND CON 121.9 348.6	CLNC DEL 127.55
--------------------------------	--	-------------------------------------	-------------------------------	---------------------------



SPOKANE 115.5 GEG Chan 102	R-027 R-208	LOCALIZER I-GEG Chan 48	△ 3031	△ 4553	△ 5235 ±
----------------------------------	----------------	-------------------------------	--------	--------	----------



ELEV 2385	D	TDZE 2346
-----------	----------	-----------



4200	GEG	VGSI and ILS glidepath not coincident (VGSI Angle 3.00/TCH 73).	LUCEV I-GEG [13.1]	One Minute Holding Pattern
GEG R-027				
		SIGYO I-GEG [6.8]		
		3900	032° → 6000	
		212°	← 212° 5500	
		3900		
		912'		
		4.8 NM	6.3 NM	
CATEGORY	A	B	C	D
S-ILS 21	RA 197/14 126 DA 2472			

SA CATEGORY I ILS - SPECIAL AIRCREW & AIRCRAFT CERTIFICATION REQUIRED

TDZ/CL Rwys 3 and 21
REIL Rwys 8 and 26
HIRL Rwy 3-21
MIRL Rwy 8-26

NW-1, 03 JAN 2019 to 31 JAN 2019

NW-1, 03 JAN 2019 to 31 JAN 2019