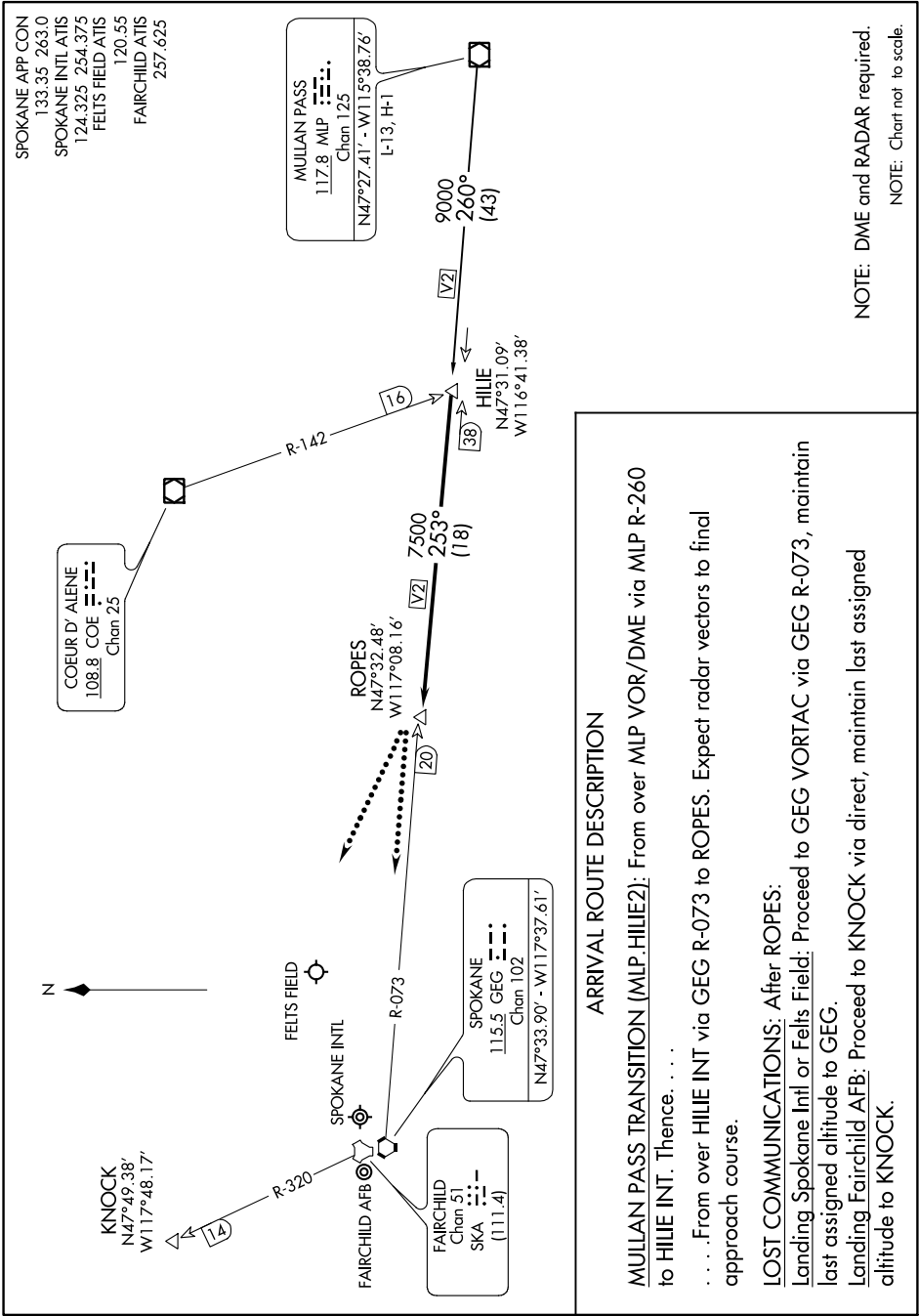


# HILIE TWO ARRIVAL (HILIE.HILIE2)

ST-403 (FAA)

SPOKANE, WASHINGTON

9102 JAN 13 13 01 JAN 2019 03 11-WN



### ARRIVAL ROUTE DESCRIPTION

MULLAN PASS TRANSITION (MLP.HILIE2): From over MLP VOR/DME via MLP R-260 to HILIE INT. Thence...

... From over HILIE INT via GEG R-073 to ROPES. Expect radar vectors to final approach course.

LOST COMMUNICATIONS: After ROPES:

Landing Spokane Intl or Felts Field: Proceed to GEG VORTAC via GEG R-073, maintain last assigned altitude to GEG.

Landing Fairchild AFB: Proceed to KNOCK via direct, maintain last assigned altitude to KNOCK.

# HILIE TWO ARRIVAL (HILIE.HILIE2)

SPOKANE, WASHINGTON