

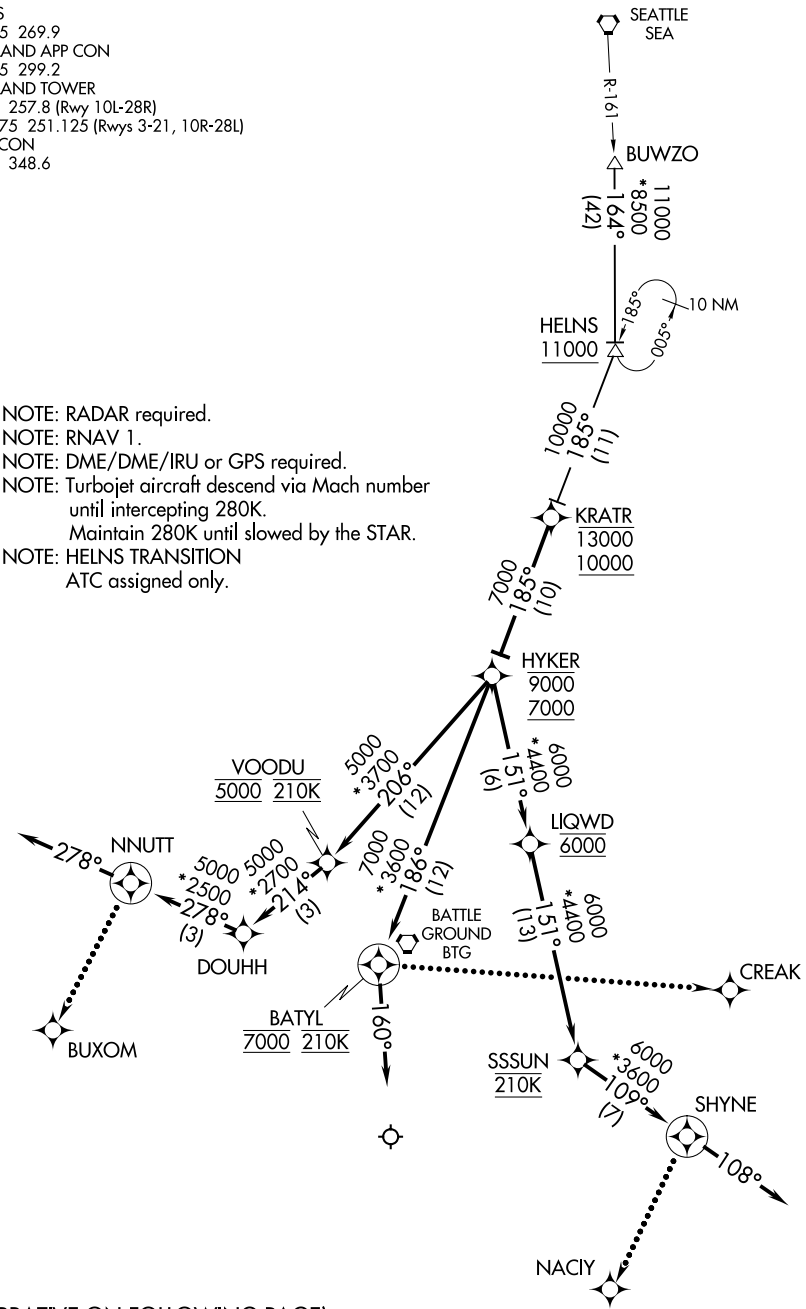
KRATR TWO ARRIVAL (RNAV)

AL-330 (FAA)

PORTLAND, OREGON

D-ATIS
 128.35 269.9
 PORTLAND APP CON
 124.35 299.2
 PORTLAND TOWER
 118.7 257.8 (Rwy 10L-28R)
 123.775 251.125 (Rwys 3-21, 10R-28L)
 GND CON
 121.9 348.6

NOTE: RADAR required.
 NOTE: RNAV 1.
 NOTE: DME/DME/IRU or GPS required.
 NOTE: Turbojet aircraft descend via Mach number until intercepting 280K.
 Maintain 280K until slowed by the STAR.
 NOTE: HELNS TRANSITION
 ATC assigned only.



NW-1, 03 JAN 2019 to 31 JAN 2019

NW-1, 03 JAN 2019 to 31 JAN 2019

(NARRATIVE ON FOLLOWING PAGE)

NOTE: Chart not to scale.

KRATR TWO ARRIVAL (RNAV)

(KRATR.KRATR2) 25JUN15

PORTLAND, OREGON

PORTLAND INTL (PDX)