

VORTAC EUG 112.9 Chan 76	APP CRS 173°	Rwy Idg 8009 TDZE 364 Apt Elev 374
--	------------------------	---

VOR or TACAN RWY 16R

MAHLON SWEET FIELD (EUG)

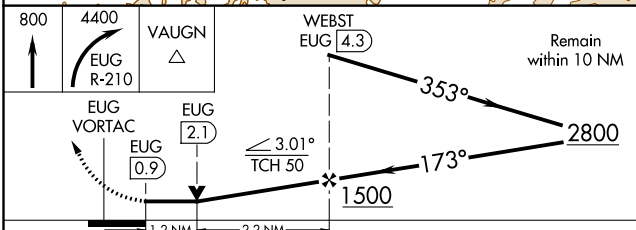
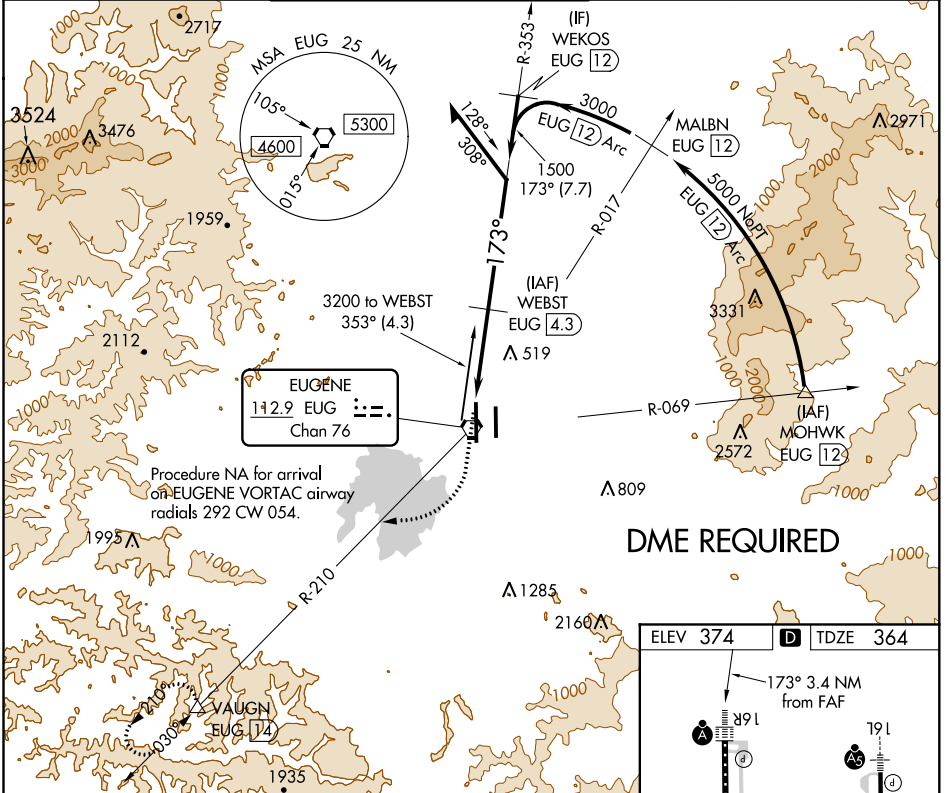
DME required for procedure entry.
DME required.

⚠ For inop ALS, increase S-16R Cat C, D visibility to RVR 6000.

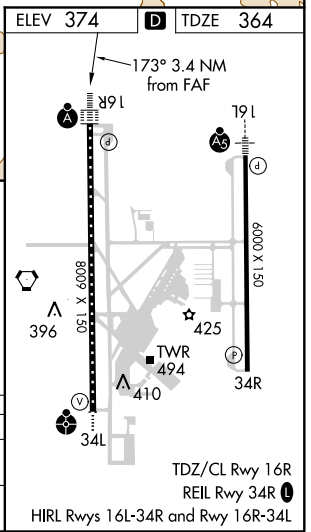
ALSF-2

MISSED APPROACH: Climb to 800 then climbing right turn to 4400 on EUG VORTAC R-210 to VAUGN/EUG 14 DME and hold. Continue climb in hold to 4100.

ATIS 125.225	CASCADE APP CON* 119.6 348.7	EUGENE TOWER* 118.9 (CTAF) 371.9 (Rwy 16R/34L) 124.15 371.9 (Rwy 16L/34R)	GND CON 121.7 269.5	CLNC DEL 121.7 269.5	UNICOM 122.95
------------------------	--	--	-------------------------------	--------------------------------	-------------------------



CATEGORY	A	B	C	D
S-16R	780/24	416 (500-½)	780/40 416 (500-¾)	780/50 416 (500-1)
CIRCLING	820-1 446 (500-1)	840-1 466 (500-1)	1000-1¾ 626 (700-1¾)	1140-2½ 766 (800-2½)



NW-1, 03 JAN 2019 to 31 JAN 2019

NW-1, 03 JAN 2019 to 31 JAN 2019