

RNAV (GPS) Y RWY 34R

MAHLON SWEET FIELD (EUG)

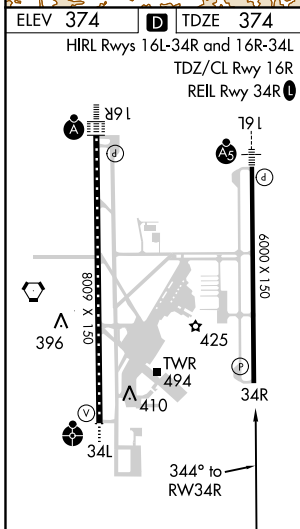
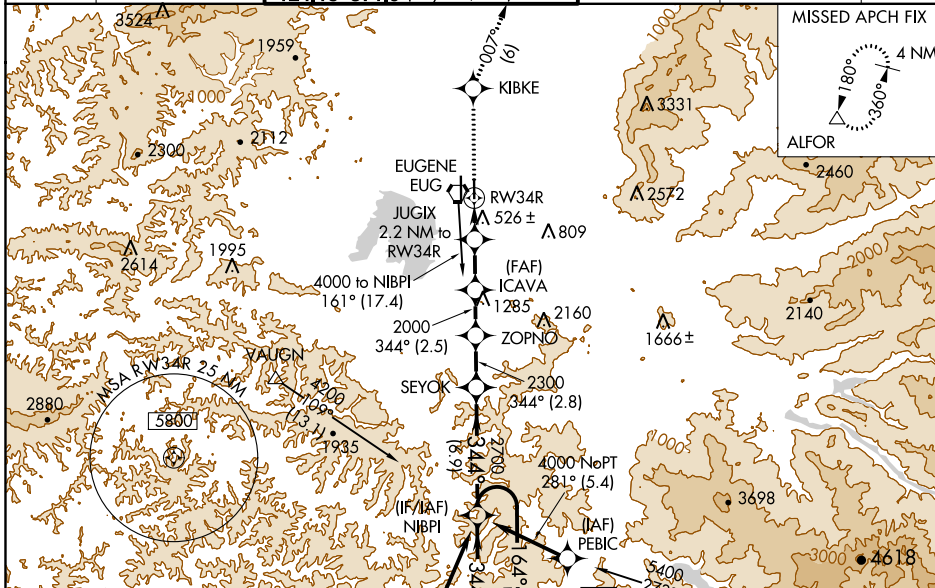
WAAS CH 81900 W34B	APP CRS 344°	Rwy ldg TDZE Apt Elev	6000 374 374
----------------------------------------	------------------------	-----------------------------	-----------------------------------------

RNP APCH.

Simultaneous approach authorized. LNAV procedure NA during simultaneous operations. Use of FD or AP providing RNAV track guidance required during simultaneous operations. Rwy 34R helicopter visibility reduction below $\frac{3}{4}$ SM NA. For uncompensated Baro-VNAV systems, LNAV/VNAV NA below -10°C or above 54°C.

MISSED APPROACH: Climb to 3000 direct KIBKE then on track 007° to ALFOR and hold.

ATIS 125.225	CASCADE APP CON* 119.6 348.7	EUGENE TOWER* 118.9 (CTAF) 0 371.9 (Rwy 16R/34L) 124.15 371.9 (Rwy 16L/34R)	GND CON 121.7 269.5	CLNC DEL 121.7 269.5	UNICOM 122.95
------------------------	----------------------------------------	-------------------------------------------------------------------------------------------------	-------------------------------	--------------------------------	-------------------------



3000	KIBKE	tr	ALFOR	NIBPI	4 NM	Holding Pattern
	007°					
*LNAV only		JUGIX	ICAVA	ZOPNO	SEYOK	NIBPI
		2.2 NM to RW34R	2000	2300	2700	4000
*1.1 NM to RW34R						
		1120*	2000			
		1.1 NM	1.1 NM	2.8 NM	2.5 NM	2.8 NM
						6.9 NM
						164° → 6000
						← 344° 4000
						GP 3.00°
						TCH 50
CATEGORY	A		B		C	
LPV DA			636-7/8		262 (300-7/8)	
LNAV/VNAV DA			661-7/8		287 (300-7/8)	
LNAV MDA	780-1		406 (500-1)		780-1 1/8 406 (500-1 1/8)	
CIRCLING	820-1 446 (500-1)		840-1 466 (500-1)		1000-1 1/4 626 (700-1 1/4) 1140-2 1/2 766 (800-2 1/2)	

NW-1, 03 JAN 2019 to 31 JAN 2019

NW-1, 03 JAN 2019 to 31 JAN 2019