

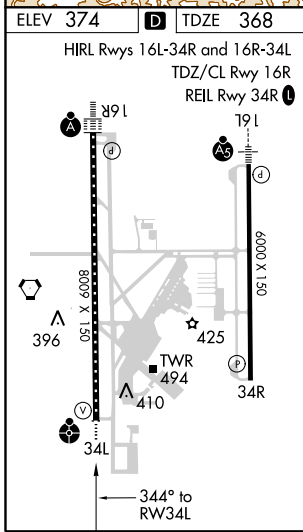
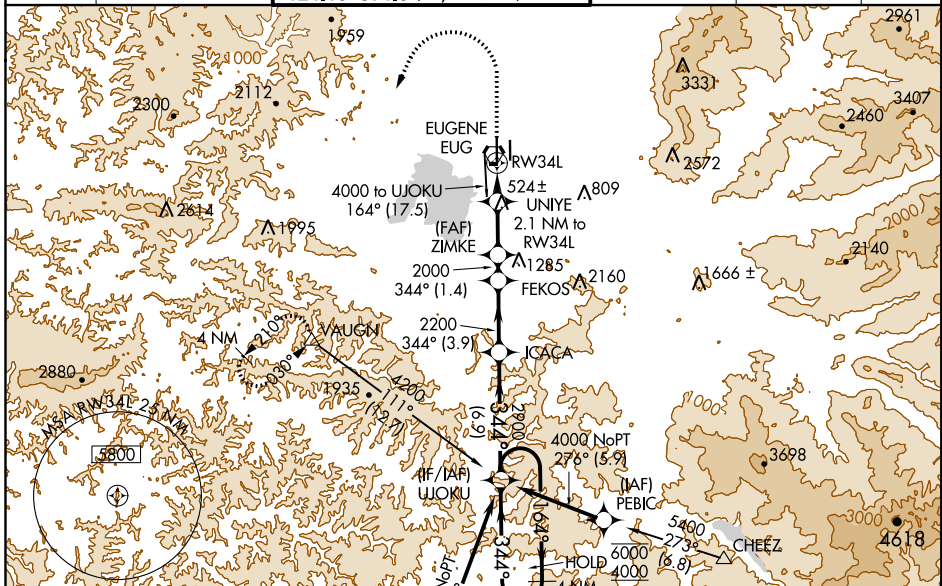
WAAS CH <b>45600</b> <b>W34A</b>	APP CRS <b>344°</b>	Rwy Idg TDZE Apt Elev	<b>8009</b> <b>368</b> <b>374</b>
--	------------------------	-----------------------------	---

# RNAV (GPS) Y RWY 34L

MAHLON SWEET FIELD (EUG)

RNP APCH.	<p>Simultaneous approach authorized. LNAV procedure NA during simultaneous operations. Use of FD or AP providing RNAV track guidance required during simultaneous operations. For uncompensated Baro-VNAV systems, LNAV/VNAV NA below -10°C or above 54°C. For inop ALS increase LNAV/VNAV visibility Cats A-B to RVR 4500. Inop table does not apply to LPV minimums.</p>	<p>ODALS</p> <p>MISSED APPROACH: Climb to 1500, then climbing left turn to 4000 direct VAUGN and hold.</p>
-----------	--	--

ATIS <b>125.225</b>	CASCADE APP CON★ <b>119.6 348.7</b>	EUGENE TOWER★ <b>118.9</b> (CTAF) <b>371.9</b> (Rwy 16R/34L) <b>124.15 371.9</b> (Rwy 16L/34R)	GND CON <b>121.7 269.5</b>	CLNC DEL <b>121.7 269.5</b>	UNICOM <b>122.95</b>
------------------------	--	--	-------------------------------	--------------------------------	-------------------------



ELEV 374	TDZE 368																																																																																				
HIRL Rwy 16L-34R and 16R-34L TDZ/CL Rwy 16R REIL Rwy 34R																																																																																					
<table border="1"> <tr> <td>1500</td> <td>4000</td> <td>VAUGN</td> <td>ZIMKE</td> <td>FEKOS</td> <td>ICACA</td> <td>UJOKU</td> <td>4 NM Holding Pattern</td> </tr> <tr> <td colspan="2">*LNAV only</td> <td colspan="2">*1.1 NM to RWY 34L</td> <td colspan="2">*2.1 NM to RWY 34L</td> <td colspan="2">*1080</td> </tr> <tr> <td colspan="2">164°</td> <td colspan="2">344°</td> <td colspan="2">164°</td> <td colspan="2">6000</td> </tr> <tr> <td colspan="2">344°</td> <td colspan="2">344°</td> <td colspan="2">2900</td> <td colspan="2">4000</td> </tr> <tr> <td colspan="2">1.1 NM</td> <td colspan="2">1 NM</td> <td colspan="2">2.9 NM</td> <td colspan="2">1.4 NM</td> </tr> <tr> <td colspan="2"></td> <td colspan="2">A</td> <td colspan="2">B</td> <td colspan="2">C</td> </tr> <tr> <td colspan="2">LPV DA</td> <td colspan="2">568/40</td> <td colspan="2">200 (200-3/4)</td> <td colspan="2"></td> </tr> <tr> <td colspan="2">LNAV/VNAV DA</td> <td colspan="2">657/40</td> <td colspan="2">289 (300-3/4)</td> <td colspan="2"></td> </tr> <tr> <td colspan="2">LNAV MDA</td> <td colspan="2">760/40</td> <td colspan="2">392 (400-3/4)</td> <td colspan="2">760/50 392 (400-1)</td> </tr> <tr> <td colspan="2">CIRCLING</td> <td colspan="2">820-1 446 (500-1)</td> <td colspan="2">840-1 466 (500-1)</td> <td colspan="2">1000-13/4 626 (700-13/4) 1140-21/2 766 (800-21/2)</td> </tr> </table>						1500	4000	VAUGN	ZIMKE	FEKOS	ICACA	UJOKU	4 NM Holding Pattern	*LNAV only		*1.1 NM to RWY 34L		*2.1 NM to RWY 34L		*1080		164°		344°		164°		6000		344°		344°		2900		4000		1.1 NM		1 NM		2.9 NM		1.4 NM				A		B		C		LPV DA		568/40		200 (200-3/4)				LNAV/VNAV DA		657/40		289 (300-3/4)				LNAV MDA		760/40		392 (400-3/4)		760/50 392 (400-1)		CIRCLING		820-1 446 (500-1)		840-1 466 (500-1)		1000-13/4 626 (700-13/4) 1140-21/2 766 (800-21/2)	
1500	4000	VAUGN	ZIMKE	FEKOS	ICACA	UJOKU	4 NM Holding Pattern																																																																														
*LNAV only		*1.1 NM to RWY 34L		*2.1 NM to RWY 34L		*1080																																																																															
164°		344°		164°		6000																																																																															
344°		344°		2900		4000																																																																															
1.1 NM		1 NM		2.9 NM		1.4 NM																																																																															
		A		B		C																																																																															
LPV DA		568/40		200 (200-3/4)																																																																																	
LNAV/VNAV DA		657/40		289 (300-3/4)																																																																																	
LNAV MDA		760/40		392 (400-3/4)		760/50 392 (400-1)																																																																															
CIRCLING		820-1 446 (500-1)		840-1 466 (500-1)		1000-13/4 626 (700-13/4) 1140-21/2 766 (800-21/2)																																																																															

NW-1, 03 JAN 2019 to 31 JAN 2019

NW-1, 03 JAN 2019 to 31 JAN 2019