

APP CRS	Rwy Idg	<b>8009</b>
<b>343°</b>	TDZE	<b>368</b>
	Apt Elev	<b>374</b>

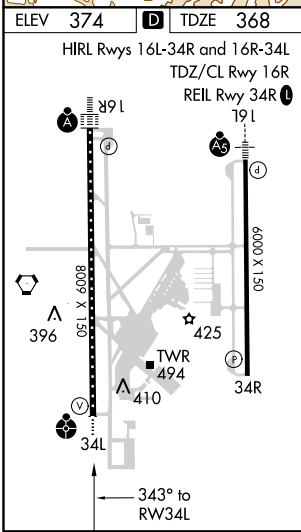
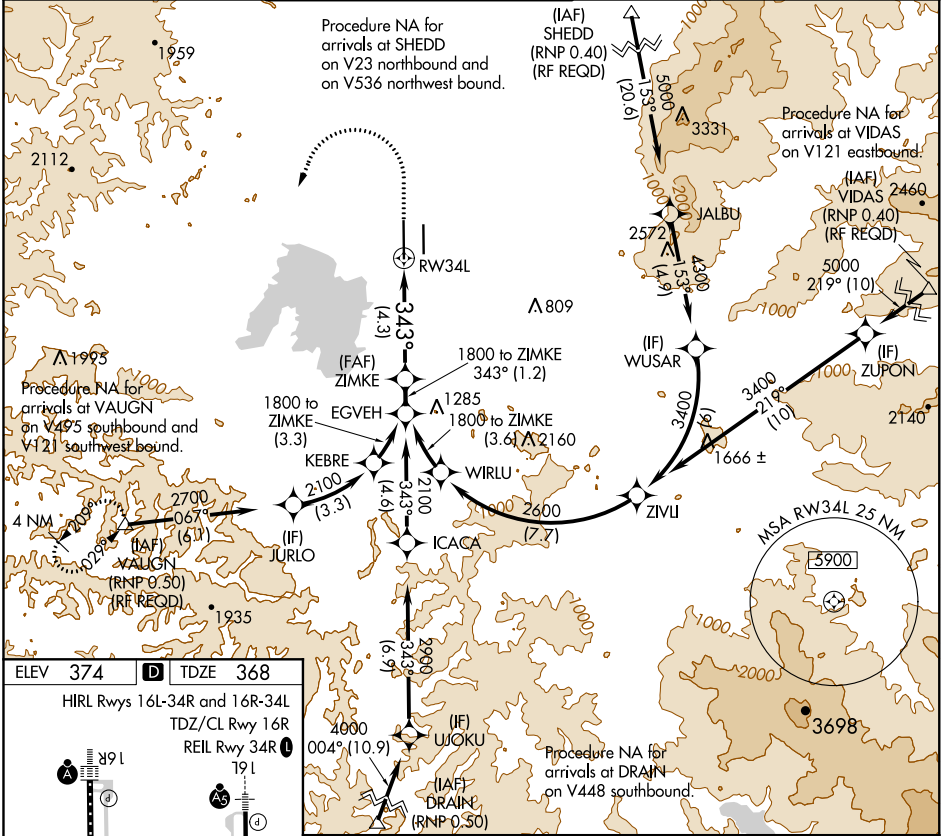
# RNAV (RNP) Z RWY 34L

MAHLON SWEET FIELD (EUG)

For uncompensated Baro-VNAV systems, procedure NA below -9°C (16°F) or above 54°C (130°F). Simultaneous approach authorized. GPS required.

**MISSED APPROACH:** Climb to 1500, then climbing left turn to 4000 direct VAUGHN and hold.

ATIS <b>125.225</b>	CASCADE APP CON* <b>119.6 348.7</b>	EUGENE TOWER* <b>118.9 (CTAF) 0 371.9 (Rwy 16R/34L)</b> <b>124.15 371.9 (Rwy 16L/34R)</b>	GND CON <b>121.7 269.5</b>	CLNC DEL <b>121.7 269.5</b>	UNICOM <b>122.95</b>
------------------------	--	---	-------------------------------	--------------------------------	-------------------------



1500	4000	VAUGHN	See planview for multiple IF locations.
		ZIMKE 1800	GP 3.00° TCH 53
CATEGORY		A	B
RNP 0.30 DA		759/50 391 (400-1)	
<b>AUTHORIZATION REQUIRED</b>			

NW-1, 03 JAN 2019 to 31 JAN 2019

NW-1, 03 JAN 2019 to 31 JAN 2019