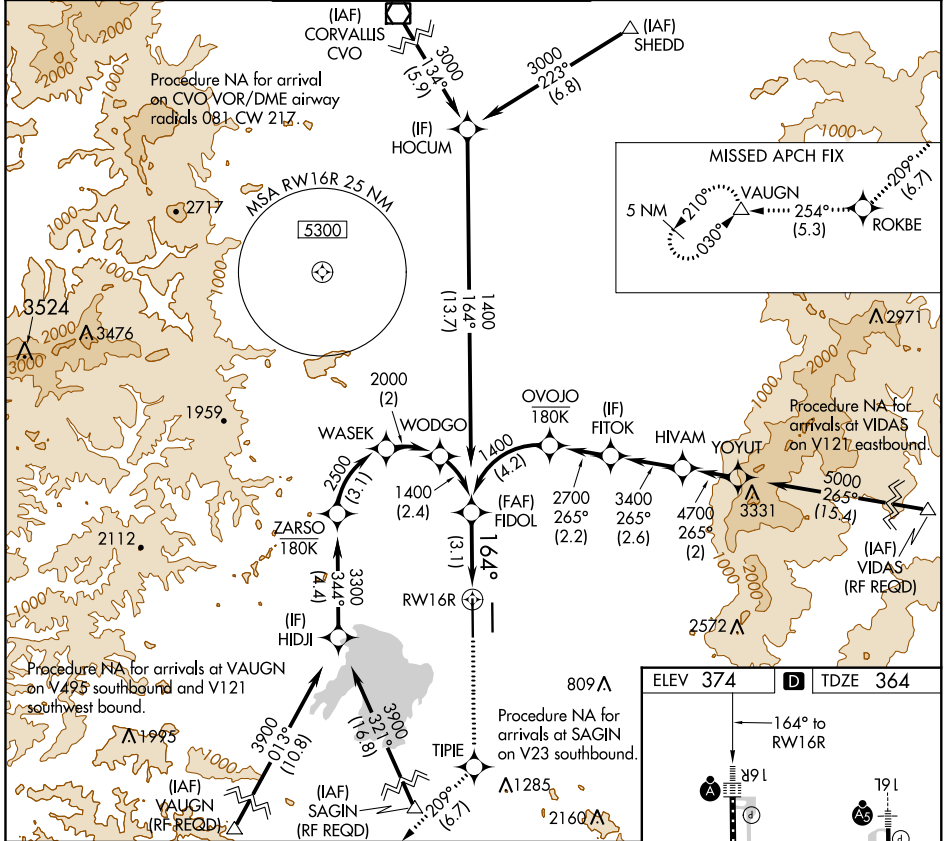


APP CRS	Rwy Idg	8009
164°	TDZE	364
	Apt Elev	374

RNAV (RNP) Z RWY 16R

MAHLON SWEET FIELD (EUG)

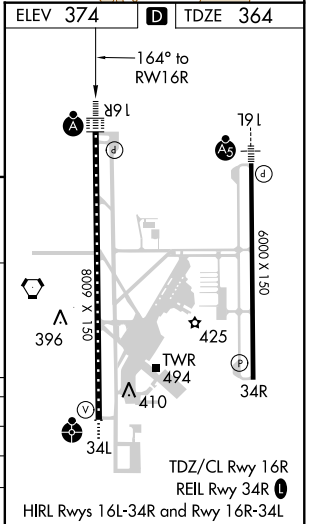
RNP AR APCH.		EUGENE TOWER ★		GND CON		CLNC DEL		UNICOM	
▼ For uncompensated Baro-VNAV systems, procedure NA below -9°C or above 54°C. Simultaneous approach authorized. For inop ALS, increase RNP 0.17 all Cats visibility to RVR 4000 and RNP 0.30 all Cats visibility to RVR 5500.		118.9 (CTAF) 0 371.9 (Rwy 16R/34L) 124.15 371.9 (Rwy 16L/34R)		121.7 269.5		121.7 269.5		122.95	



NW-1, 03 JAN 2019 to 31 JAN 2019

NW-1, 03 JAN 2019 to 31 JAN 2019

FIDOL	5000	TIPIE	ROKBE	VAUGN
1400	↑	tr 209°	tr 254°	△
1400	See planview for multiple IF locations.			
GP 3.00° TCH 51				
3.1 NM				
CATEGORY	A	B	C	D
RNP 0.17 DA	614/24 250 (300-½)			
RNP 0.30 DA	711/30 347 (400-¾)			



AUTHORIZATION REQUIRED