

APP CRS 164°	Rwy Idg 6000
	TDZE 369
	Apt Elev 374

RNAV (RNP) Z RWY 16L

MAHLON SWEET FIELD (EUG)

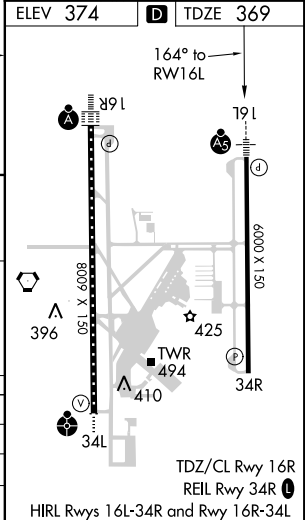
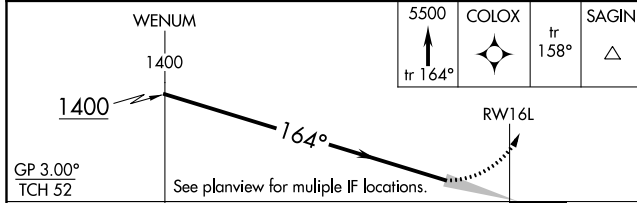
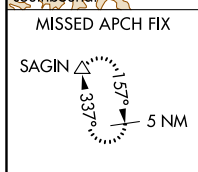
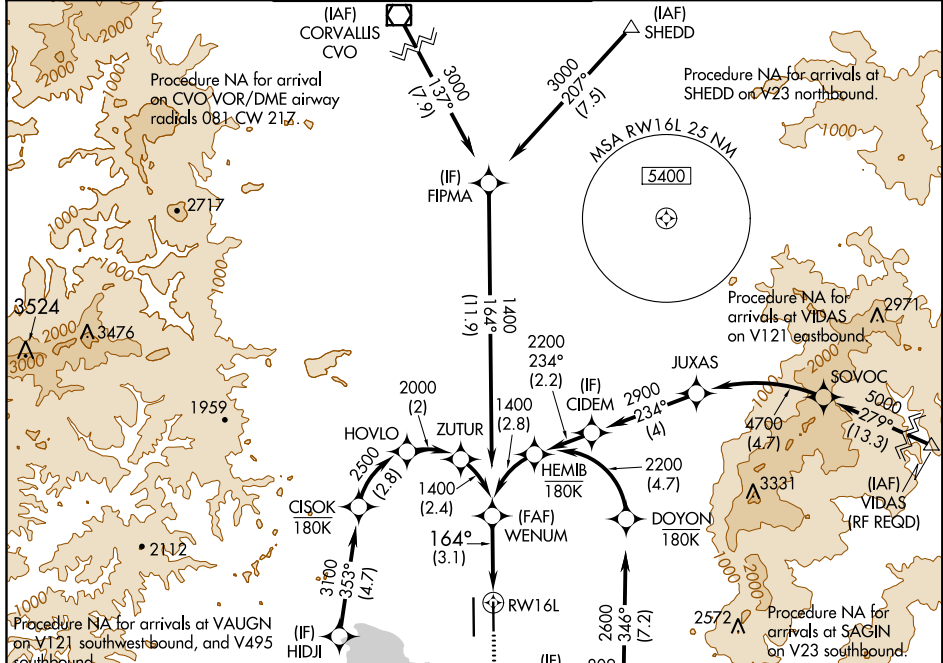
RNP AR APCH.

▼ For uncompensated Baro-VNAV systems, procedure NA below -9°C or above 54°C. Simultaneous approach authorized. For inop ALS, increase RNP 0.30 all Cats visibility to 1 SM.



MISSED APPROACH: Climb to 5500 on track 164° to COLOX and on track 158° to SAGIN and hold, continue climb-in-hold to 5500.

ATIS 125.225	CASCADE APP CON ★ 119.6 348.7	EUGENE TOWER ★ 118.9 (CTAF) 0 371.9 (Rwy 16R/34L) 124.15 371.9 (Rwy 16L/34R)	GND CON 121.7 269.5	CLNC DEL 121.7 269.5	UNICOM 122.95
------------------------	---	---	-------------------------------	--------------------------------	-------------------------



GP 3.00° TCH 52	See planview for multiple IF locations.			
	3.1 NM			
CATEGORY	A	B	C	D
RNP 0.10 DA		699-½	330 (400-½)	
RNP 0.30 DA		749-⅝	380 (400-⅝)	

AUTHORIZATION REQUIRED

NW-1, 03 JAN 2019 to 31 JAN 2019

NW-1, 03 JAN 2019 to 31 JAN 2019

TDZ/CL Rwy 16R
REIL Rwy 34R
HIRL Rwsy 16L-34R and Rwy 16R-34L