

LOC/DME I-EUG 110.1 Chan 38	APP CRS 164°	Rwy ldg 8009 TDZE 364 Apt Elev 374
------------------------------------------	------------------------	---------------------------------------------------------------

ILS RWY 16R (SA CAT I)

MAHLON SWEET FIELD (EUG)

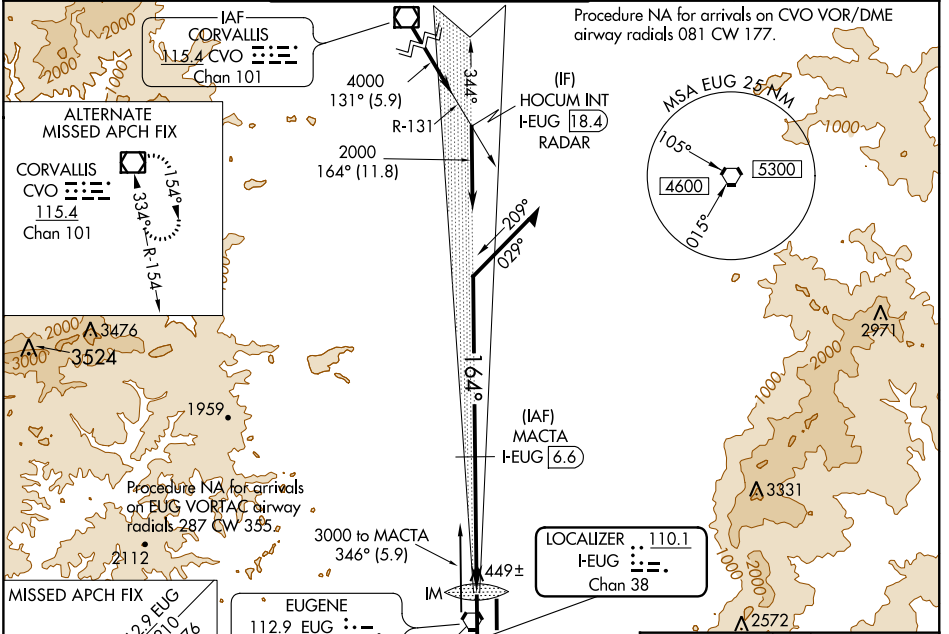
DME required.

Simultaneous approach authorized. Requires specific OPSPEC, MSPEC, or LOA approval and use of HUD to DH. SA Cat I minimums NA when control tower closed.

ALSIF-2

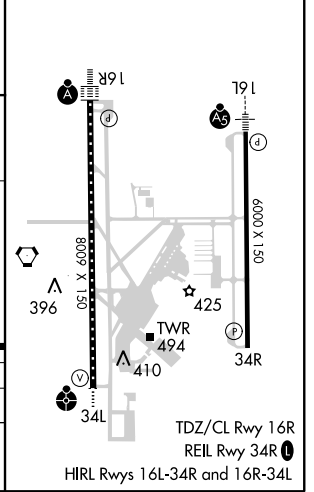
MISSED APPROACH: Climb to 1000 then climbing right turn to 5000 on heading 230° and on EUG VORTAC R-210 to VAUGN/EUG 14 DME and hold, continue climb-in-hold to 5000.

ATIS 125.225	CASCADE APP CON ★ 119.6 348.7	EUGENE TOWER ★ 118.9 (CTAF) 371.9 (Rwy 16R/34L) 124.15 371.9 (Rwy 16L/34R)	GND CON 121.7 269.5	CLNC DEL 121.7 269.5	UNICOM 122.95
------------------------	-----------------------------------------	-------------------------------------------------------------------------------------------------------	-------------------------------	--------------------------------	-------------------------



Remain within 10 NM	MACTA I-EUG 6.6	1000	5000	EUG R-210	VAUGN
2500	6000	↑	hdg 230°	△	
GS 3.00° TCH 51	2000	Use I-EUG DME when on localizer course.			
344°	2000	IM			
164°	2000	5 NM			
2000	952'				

ELEV 374	TDZE 364
----------	----------



EUGENE, OREGON
Amdt 38A 13SEP18

44°07'N-123°13'W

MAHLON SWEET FIELD (EUG)
ILS RWY 16R (SA CAT I)

TDZ/CL Rwy 16R
REIL Rwy 34R
HIRL Rwy 16L-34R and 16R-34L

NW-1, 03 JAN 2019 to 31 JAN 2019

NW-1, 03 JAN 2019 to 31 JAN 2019